



Sustainability
Mindset
Indicator®

**/REPORT
PREPARED FOR:
2024UniNe-1187
03/Feb/2025**

*If for every dollar in minute that we invest in AI, we invest another dollar in developing our own consciousness, our own mind, we will be ok. **Yuval Noah Harari***

FOOD FOR THOUGHT.

How ready do you feel you are to deal with the complexity we are living in? How do you respond to the increasing polarization, to the need to expand our attention to stakeholders impacted by our daily decisions? How comfortable are you planning and yet letting go of your plans as you consider the feedback that reality is giving you? How easy is it for you to adapt, revisit your assumptions, unleash your creativity, and innovate?

These are some of the key indicators of resilience.

We find comfort in our plans, in the 'known and tried out' ways of doing things. Yet this may also be the obstacle that slows us down when we need to find new ways of acting that have a better impact on the world. While much is talked about the future that awaits us, it's easy to forget that it is *us*, each one of us, who is shaping this future with our daily decisions and actions. Yet, rushed as we all live in these demanding times, we may not take the moment to pause, observe where we are, what our most precious goals and values are, and how our day, today, is reflecting those values, leading us to those goals. And what course corrections we may want to do!

This is the Era of Purpose. How mindful are you of your larger purpose? Setting a purpose becomes the compass offering certainty in a world filled with uncertainty. Are you giving yourself the gift of a pause, to ask yourself what your larger, higher purpose could be?

You may recognize in these lines some aspects that were addressed in the statements offered to you in the Sustainability Mindset Indicator, as you were invited to reflect and choose which best represented you. This report constitutes a picture, a map of your personal journey towards a resilient, purposeful, creative mindset for flourishing as an individual, making a difference in the world. Which is sustainability at its best.

Let this report be a gift for your soul.

Welcome to your Personalized Report. This Report is based on your selections on the SMI. It is meant to be a personal development tool, to highlight aspects of your understanding, behaviors and feelings related to your Sustainability Mindset (SM).

You will find observations that you may identify with, others that you vaguely recognize, and others that perhaps don't resonate with you. Keep what you need and what makes sense to you.

You will also find questions to consider, suggestions for things you can try, and information related to the aspects covered in this report, and how these are related to the Sustainability Mindset.

Take your time reading your Report. Pause, take notes, and reflect. It is all about you, and for you. There were no wrong answers in the survey. Only good options and perhaps some that you hadn't thought of.

/WHAT YOU WILL FIND IN THE FOLLOWING PAGES

This Personalized Report is organized into several sections. The first section contains a graph, displaying how the different aspects assessed compare to each other, according to your choices in the survey. Those that occupy a larger area are your stronger ones and the narrower or missing ones are aspects of the Sustainability Mindset that are less developed or absent for you, as inferred from the combination of your answers.

The next section presents personalized descriptions of where you find yourself on your journey towards a Sustainability Mindset, in four clusters: Ecological Worldview, Systems Perspective, Emotional Intelligence, and Spiritual Intelligence.

Within each of these clusters you will find what aspects were assessed, and a graph for each aspect displaying how you connect to this topic, whether intellectually, through your actions and behaviors and/or by engaging your emotions.

If you see some areas missing within the graph, it means that either you selected “neither” for that question and therefore we don’t have information to report on, or your answers suggest you don’t engage in one or more areas (cognitive, behavioral, or affective). Similarly, if you selected “neither” for all the questions within one Sustainability Mindset Principle, we don’t include a graph, since we don’t have information to report on.

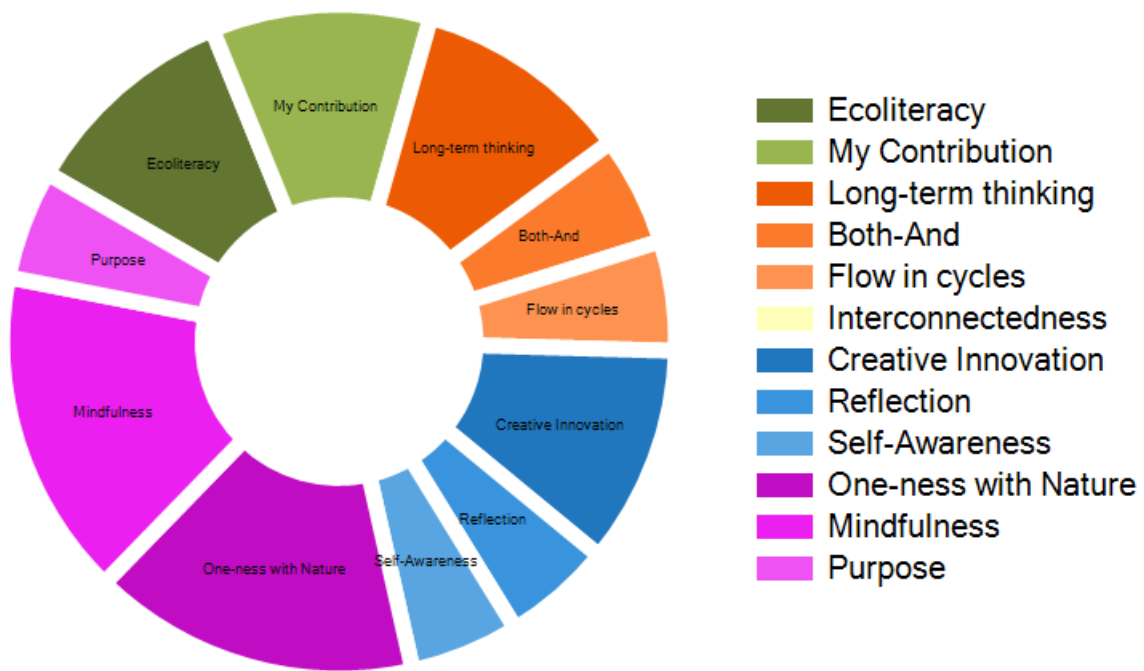
Each graph is accompanied by a box with a brief explanation, and you will find much more information in the text to include what your choices suggest, why this Principle is key for a sustainability mindset, and questions to ponder and suggestions to try.

Enjoy your journey into the realm of the Sustainability Mindset - a place where you can be your best, for yourself and for the World.

The SMI Team

**/ Your overall SUSTAINABILITY
MINDSET PROFILE**

The graph below shows your personal profile, indicating how – relatively to each other – you have developed your Sustainability Mindset. The wider sections indicate your stronger areas, and vice versa.





/ECOLOGICAL WORLDVIEW

An ECOLOGICAL WORLDVIEW is the result of having an intellectual and affective broad understanding of the planetary challenges, how they are interrelated, and how we are contributing to them.

/WHAT IS ASSESSED HERE: HOW YOU UNDERSTAND THE ENVIRONMENTAL AND SOCIAL CHALLENGES, AND HOW YOU FEEL ABOUT IT, AND THE IMPACT ON YOUR BEHAVIORS.



What this tells you:

This graph shows the two dimensions of cognitive and behavioral, meaning that you have an intellectual understanding of this aspect, and you also act upon it. We don't have enough data to report if or how you connect with your feelings related to this item.

YOUR SMI RESPONSES INDICATE THAT you have a good understanding of the complexity of the planetary challenges we are facing, and how they are interrelated.

/YOU ARE COMFORTABLE WHEN you act in ways that can minimize your ecological or social footprint, and/or help the sustainability of our planet with your daily decisions. We cannot comment on your feelings, since you indicated (by choosing "neither") that you did not find yourself represented by either of the available options.

/THOUGHTS TO PONDER WHEN YOU CONSIDER THE SM:

We are definitely living in a time of information overload. It is challenging to stay on top of all that is happening, while keeping up with our own obligations and activities. Furthermore, sustainability news tends to be on the negative side, creating doomsday scenarios and scary prophecies that can trigger anxiety, make us feel bad, sad, or worried.

Yet we tend to underestimate our own power and influence in shaping a better world. As a matter of fact, if the challenges we are currently experiencing are a product of past problematic behaviors, then we are also positively shaping the future of the planet with our current mindful decisions and restorative actions. That opens an interesting path.

You understand the scope of the sustainability challenges, from the environmental and social perspective; you notice linkages, relationships and connections.

The other powerful path is in our emotions. When we allow ourselves to connect from the heart with the reality of the news and find small ways to change our behavior, we are more present and don't need to live with our divided selves.

This can be more fulfilling.

/HOW ABOUT YOU TRY:

Here are some suggestions to ponder: What are things you are good at that you aren't incorporating into your sustainability contributions? Who could benefit and where from your gifts and talents and possibly your passion?



Understanding the state of the planet allows us to be more fully aware of the challenges, the complexity of how they are linked to each other, and to explore what it means to us.



This page is here for you to note your reflections, insights, and questions.

**/WHAT IS ASSESSED HERE:
HOW YOU SEE THE RELATION
BETWEEN INDIVIDUAL DECISIONS
AND PLANETARY CHALLENGES, HOW
YOU FEEL ABOUT IT AND THE
IMPACT ON YOUR PERSONAL
BEHAVIORS.**



What this tells you:

This graph shows only the affective dimension, meaning that your predominant tendency is to connect emotionally with this aspect, without necessarily engaging in related behaviors or fully comprehending it. You might want to try and expand your understanding and also explore how you might make a small difference every day.

YOUR SMI RESPONSES INDICATE THAT you are a sensitive person with an open heart, and you possess the skills to connect freely with your emotions as well as to feel for others, with empathy and compassion for their suffering. This is a precious quality, although at times it can be difficult to live with it.

/YOU ARE COMFORTABLE WHEN you can have a pragmatic approach to the world. This collides with your natural gift to feel empathy, and so you seek to distance yourself from distressing

information about sustainability problems to avoid getting emotionally entangled. You are aware of the many environmental and social challenges, but you aim to keep them separated from your personal life. After all, you didn't cause them!

So, you hope someone will eventually intervene. Yet, this perspective also can cause stress, as it assumes we are at the mercy of powerful external forces or individuals.

/THINK ABOUT HOW YOU CAN FURTHER LEVERAGE THOSE STRENGTHS AND MANAGE SOME OF THE LIMITATIONS WHICH MAY BE HOLDING YOU BACK:

There may be another way to look at this: What if you could identify small ways in which you realize that you are contributing to the problems, and then, begin to explore changes that are within your control?

Certainly, you will not solve the bigger problems, but you may feel more empowered, less at the mercy of others, and playing a role that you may actually enjoy. Food for thought!

/THOUGHTS TO PONDER WHEN YOU CONSIDER THE SM:

Thinking of how we are personally contributing to the planetary challenges may not be something we do daily. Our demanding lives have many obligations and don't leave much time for reflecting on this. We are busy getting things done!

Yet when analyzing the current un-sustainability of our planet, science has clearly established a link between human behaviors in past decisions and the current problems we face. Much attention is now focused on how to repair the damage done, and how to restore damaged, depleted, or endangered resources. Scientists and entrepreneurs study how to minimize current or

future problems at the environmental or social level, and how to innovate to avoid negative impacts into the future.

If we collectively influenced the place, we find ourselves in now (with all its problems), that means we also hold the key to influence where we will collectively be in the future – we: meaning humankind at large, or, from a closer perspective, our families, children, and grandchildren.

/HOW ABOUT YOU TRY:

What if you could develop the habit of asking yourself periodically: *how am I contributing to this problem?* This question opens a path of inquiry, which automatically leads to expansion of your consciousness. You become more alert to take notice, and thus more open to try out new behaviors.

This same question, by the way, is also a powerful tool that can improve your relationships and interactions with others! So often we focus on what others are doing unto us, which leaves us powerless. When we learn to pay attention to what is our role in the problems we endure, we regain control and can actually do something.

Actively thinking about your contribution is definitely an important milestone in your personal development, with planetary implications.



When we identify the ways in which we are unintentionally contributing to the problems, we have a chance to do something about them. It also expands our consciousness and develops social sensitivity.



/SYSTEMS PERSPECTIVE

When analyzing information and making decisions a SYSTEMS
PERSPECTIVE has a major impact on the sustainability of our actions.

**/WHAT IS ASSESSED HERE:
HOW YOU THINK ABOUT THE LONG-TERM IMPACT WHEN ANALYZING AND MAKING DECISIONS, COMPLEMENTING SHORT-TERM THINKING; HOW YOU FEEL ABOUT IT, AND THE IMPACT ON YOUR BEHAVIORS.**



What this tells you:

This graph shows the two dimensions of cognitive and behavioral, meaning that you have an intellectual understanding of this aspect, and you also act upon it. We don't have enough data to report if or how you connect with your feelings related to this item.

YOUR SMI RESPONSES INDICATE THAT you have a good understanding of the long-term sustainability impacts that our decisions may have, even the simple and daily ones, not to mention behaviors commonly accepted in our society.

/YOU ARE COMFORTABLE thinking of "what ifs" and the long-term consequences of possible decisions before taking them. This may not always be welcome in a team setting, but from the perspective of shaping a sustainable world, this contribution is a great asset

to yourself and to your working groups. Your perspective will likely enrich actions, as they result from considering potential impacts in the longer term.

We cannot comment how you feel about this, since you indicated (by choosing "neither") that you did not feel represented by either of the available options.

/THINK ABOUT HOW YOU CAN FURTHER LEVERAGE THOSE STRENGTHS AND MANAGE SOME OF THE LIMITATIONS WHICH MAY BE HOLDING YOU BACK:

So how do you relate to others, who don't see it like you? Does it happen sometimes to you that you cannot understand why others passionately resist your long-term thinking?

If that is the case you might want to remember the emotional weight of uncertainty. You might feel a bit of anxiety or fear of the unknown yourself, if you would check on your feelings.

/THOUGHTS TO PONDER WHEN YOU CONSIDER THE SM:

There is a tacit pressure to act promptly and focus on that which needs immediate attention. This is very important, and there are many circumstances where this way of responding is the optimal, or even the only one that matters. A fire in the house, for example. We can sense the urgency and it is not a good idea to pause and reflect on the long-term implications of the fire. But for many daily decisions, the context is different, and yet we still prioritize short term thinking, often without even pondering any medium- or long-term impacts of what we are doing. The stream of life, our colleagues, perhaps everyone with whom we interact takes for granted that we "all" act this way.

On the other hand, with greater understanding of the social and environmental problems we are facing, it has become clear that the law of cause-and-effect is always at play, even if not immediately obvious. In other words, the consequences of our daily actions do have impacts - some over time, some just in a different geography, and many on both.

As with other aspects which are key for a sustainability mindset, it is not a question of choosing one over the other, but a matter of balancing both views and taking both time horizons into account.

This mental habit expands our consciousness, as we become more aware of the way we are impacting others and the world. Not thinking about this doesn't stop it from happening. Stretching our imagination to consider potential impacts across time helps us make better decisions, and play a more active role in shaping a better world.

This is something about which you seem to know quite a lot.

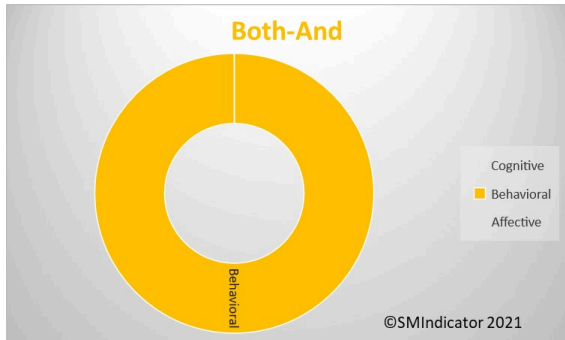
/HOW ABOUT YOU TRY:

Empathy and understanding go hand in hand, and smooth out our interactions. Is this something you remember when you are in a conversation? Or something you would like to keep in mind?



Every action has consequences that are not immediately visible. Considering the long-term when analyzing situations and making decisions has a positive impact on global sustainability.

**/WHAT IS ASSESSED HERE:
HOW YOU THINK ABOUT AND DEAL
WITH AMBIGUITY AND PARADOXES,
HOW YOU RECOGNIZE DIVERSITY,
FEEL ABOUT IT AND ACT TOWARDS
IT.**



What this tells you:

This graph shows only one dimension – behavioral - indicating that you are action- oriented without much engagement of your feelings. You might use this information to explore your emotions.

We don't have enough data to report on your understanding about this aspect.

YOUR SMI RESPONSES INDICATE THAT you might frequently ask yourself how other people arrive at their opinions and perspectives, puzzling as they may look to you. It is possible that you even become curious and engage in conversations to better understand them.

We cannot comment on your thinking related to this topic, since you indicated (by choosing "neither") that you did not find yourself represented by either of the available options.

/THINK ABOUT HOW YOU CAN FURTHER LEVERAGE YOUR STRENGTHS AND MANAGE SOME OF THE LIMITATIONS WHICH MAY BE HOLDING YOU BACK:

However, your choices in the questionnaire indicate that being understanding with others' perspectives doesn't always come easy to you and sometimes you may feel frustrated or impatient. Do you sometimes wonder if your impatience may be perceived as being not inclusive? If this is the case, you may feel a certain amount of tension, as you do your best to be understanding, but your heart remains true to values you were taught and respect.

Of course, you wish there would be a solution that might make everyone happy, one that accommodates diverse ways of seeing the economy, ecosystems, humans, and the planet, but you don't think this is as simple as it sounds.

/HOW ABOUT YOU TRY:

Here is a question to consider: Can you think of an event or situation, however minor, where someone with a different opinion was able to step into your shoes? How did it make you feel? How did it impact your attitude and your behavior? What if we could shape a world that makes room for different perspectives, where people acknowledge others' points of view, the way you frequently include theirs?

Now, in what areas does empathy and inclusion come easier to you, and which situations are more challenging? This is your work.

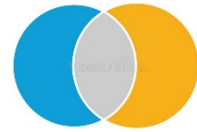
Since we cannot control what others think or do but do have control over our own way of thinking, there may be an interesting path worth exploring here. Your behavior is role modeling it, and this is very valuable. Are you aware of it? Do you help others notice it, particularly the benefits of inclusion?

/THOUGHTS TO PONDER WHEN YOU CONSIDER THE SM:

It seems that today, more than ever, we are collectively being confronted with paradoxes and ambiguity. Increased transparency and access to information from around the world makes us aware of very different ways of thinking, being and acting with which we may not agree or be comfortable.

Challenging as this may be, there is a benefit to it: We are becoming aware of our own worldviews just by realizing that there are other ways of seeing and feeling. This is an evolutionary insight of great value, the foundation for more peaceful societies. In a way, life is prompting us to expand our understanding and our scope of caring, which go hand in hand.

When we understand something, we can begin caring. This is the start of a better world for all.



Both+and thinking allows us to understand paradoxes and calls for creative solutions that are inclusive of all stakeholders.

**/WHAT IS ASSESSED HERE:
HOW YOU BALANCE YOUR CAPACITY
TO ANALYZE AND PLAN WITH THE
UNDERSTANDING OF NATURAL
CYCLES, AND MAKE THEM PART OF
YOUR MINDSET.**



What this tells you:

This graph shows only one dimension – cognitive - meaning that you have an intellectual understanding about this aspect. You are not necessarily engaging your feelings nor converting them into actions. You might use this information to explore your emotions related to this aspect of the sustainability mindset, and perhaps find ways to convert your understanding into actions.

YOUR SMI RESPONSES INDICATE THAT you are profoundly committed to actions, enjoying the challenges life offers you.

/YOU ARE VERY COMFORTABLE crafting plans and setting goals to measure your progress. You derive a sense of fulfillment and satisfaction when you achieve the goals you set for yourself. This allows you to feel empowered and in control, which is a nice feeling, particularly as it avoids the stress of uncertainty.

At the same time, you are aware of the commonly shared belief that humans are the most intelligent species, the apex of creation, with the intellectual ability to control nature. And you have come to realize this assumption is most frequently contradicted by reality, particularly when we think in a linear way, acting outside the cycles of Nature.

/THINK ABOUT HOW YOU CAN FURTHER LEVERAGE YOUR STRENGTHS AND MANAGE SOME OF THE LIMITATIONS WHICH MAY BE HOLDING YOU BACK:

While planning is a way to feel in control of situations, you also have noticed that it is constantly challenged since life - with its countless variables - is too complex to be managed.

Do you experience frustration at times when things don't work out as you planned, or expected? How do you react? Do you let go of your plans and observe what the events are telling you, or do you use persistence and incremental efforts to stay on top of your planned course?

/THOUGHTS TO PONDER WHEN YOU CONSIDER THE SM:

You may be wondering why planning is related to several key aspects for a sustainability mindset. The connection is not in the planning as an activity per se, but in the way we think and process information when we plan. Planning is about organizing and structuring in order to control outcomes. Planning is linear by definition -one step after the other - and it assumes cause-effect relationships. But what about multi-effects, multi-causes, and feedback loops?

Contrast this with the sustainability problems we are facing. To begin with, they are complex and multidimensional by their very nature. Many are

the result of our linear thinking, for example we believe that we can pursue unlimited growth, yet depletion of natural resources shows us this is not possible.

Our reliance on the human mind can create a collective assumption that we are in control, but a “small” manifestation like Covid-19 arrives as a surprise to debunk the myth of our own superiority.

/HOW ABOUT YOU TRY:

Planning in itself is not the problem but rather, excessive reliance on carefully crafted steps. How do you incorporate the cycles of nature into your planning? As an example, do you accept phases of growth and decline - aging and impermanence, along with endings and mortality followed by new beginnings and birth? How do you incorporate humanity as part of Nature, rather than its controller? Many implications to think about, indeed.

Here a few thoughts to ponder. Do you see yourself balanced in terms of making and letting go of plans? How do you balance structure and flow, organization and flexibility?

Relaxing your grip on plans may cause uncertainty, yet like swimming along with the river’s current, it can also increase your speed, and reduce the stress of resisting obstacles. Worth a try.

There are no linear processes in Nature: Everything flows in cycles of birth, growth, death, and rebirth.

Many aspects of man-made unsustainability of the planet are a result of the misconception that we are not governed by this law of Nature.



**/WHAT IS ASSESSED HERE:
HOW YOU UNDERSTAND AND
EXPERIENCE INTERCONNECTEDNESS,
VERSUS VALUES LIKE AUTONOMY
AND INDEPENDENCE.**

YOUR SMI RESPONSES INDICATE THAT you thrive in contexts where you can compete and work towards being your personal best.

You believe independence and autonomy are very important aspects of human life, perhaps as a combination of a given right, a personal goal and a precious virtue to cultivate. They signify ownership and accountability to you.

While we cannot comment on your feelings about this topic, since you indicated (by choosing "neither") that you did not find yourself represented by either of the available options, this combination of aspects may come at a price since valuing self-reliance can be a high expectation we set to ourselves.

**/THINK ABOUT HOW YOU CAN
FURTHER LEVERAGE YOUR
STRENGTHS AND MANAGE SOME
OF THE LIMITATIONS WHICH MAY
BE HOLDING YOU BACK:**

It is not always possible to live up to other people's expectations, not to mention our own, which often are even higher. Furthermore, in many settings where teamwork or collaboration is expected, it may be challenging to balance your individual performance with the collective contributions, and your personal efforts, gifts or skills may go unrecognized, or possibly even unappreciated.

Let's pause for a moment: Can you name one achievement that was purely and authentically your own without another person playing any role in it?

**/THOUGHTS TO PONDER WHEN YOU
CONSIDER THE SM:**

You may not have given it much thought, but the polarities of independence vs. interconnectedness and competition vs. collaboration are of particular relevance when focusing on sustainability. To begin with, the environmental and social challenges are complex and multidimensional, making it impossible for any one person to solve on their own. It is only through collective thinking, action and the collaboration of multiple stakeholders that we will be able to develop alternatives. (This, by the way, makes sustainability a great opportunity for contributing personal skills to a larger cause).

While certain cultures have a collectivistic framework, most of the western-northern culture - widely exported and globalized - is individualistic and celebrates personal achievement. However, is this realistic and even feasible?

/HOW ABOUT YOU TRY:

We invite you to explore what autonomy means for you. What are the roots of this value for you, perhaps in your upbringing or in your current context? Is this authentically a priority for you, or is it something automatically inherited, or adopted without giving it much thought?

If you have identified an accomplishment that you consider authentically your merit, make a list of who may have played a role in it. Rank them, in order of relevance or impact on your success. What does this exercise tell you about the polarity of autonomy versus interconnectedness?

*When we see interconnectedness,
we understand the importance of
diversity, and our decisions and
actions become more inclusive,
which contributes to the
sustainability of the whole.*

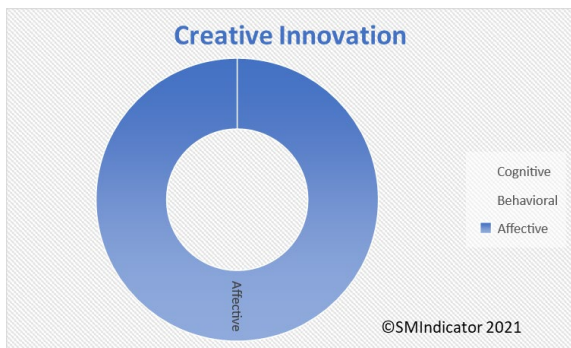




/EMOTIONAL INTELLIGENCE

Understanding ourselves through the anchors of our identity, the pace of our life, and how we consider our intuitive wisdom are key for a sustainability mindset.

**/WHAT IS ASSESSED HERE:
HOW YOU INCORPORATE NON-
RATIONAL INFORMATION, INTUITIVE
KNOWING, CREATIVITY AND
IMAGINATION IN ORDER TO
BALANCE RATIONAL THINKING, AND
HOW YOU FEEL ABOUT IT.**



What this tells you:

This graph shows the affective dimension, meaning that you connect emotionally with this aspect. We don't have data to report if or how these feelings relate to your understanding and behaviors.

YOUR SMI RESPONSES INDICATE THAT you find uncertainty exciting!

You enjoy the fact that reality presents you with plenty of unknowns. We cannot comment on your thinking or behaviors related to this topic, since you indicated (by choosing "neither") that you did not find yourself represented by either of the available options.

You may be channeling the adventure-ready aspects of your personality into specific contexts - perhaps your free time or your vacation, where your creativity and intuitive wisdom can be expressed. Do you also

bring it into your profession and work-related decisions?

**/THOUGHTS TO PONDER WHEN YOU
CONSIDER THE SM:**

You may notice that the sustainability challenges we are facing are largely new, and as COVID-19 taught us, increasingly situations arise for which we don't have previous experience or science on which to rely. We have become more aware of the complexity of our challenges, and we are skeptical of the effectiveness of simplistic solutions.

However, this also requires entry into uncharted territories. Resilience calls for flexibility in adapting to new situations, and this entails innovating and experimenting. Having no plans or blueprints to follow may be unsettling, and the only choice is to take some risks.

**/THINK ABOUT HOW YOU CAN FURTHER
LEVERAGE YOUR STRENGTHS AND
MANAGE SOME OF THE LIMITATIONS
WHICH MAY BE HOLDING YOU BACK:**

In a world that prioritizes logic and rational thinking, this seems to be our current challenge: How can we balance plans with imagination?

How comfortable do you feel bringing your rich creativity and risk tolerance into other situations, beyond where you are expressing them now? You have a very valuable asset – the acceptance of uncertainty and the ability to unleash your imagination. Can you imagine if you could expand these and bring them out more frequently?

Here is a thought to ponder: What would have to be true and how can you influence this?

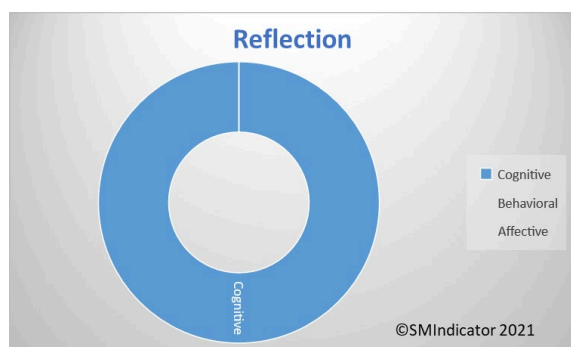
It seems that you have a reservoir of imagination available to tap into, and perhaps intuitive wisdom as

well. This can help complement the more common strategic thinking, and maximize your achievements for the benefit of all.

Resilience is based on constant creativity, innovation, and experimentation. When we neglect the non-rational wisdom we have in us, our solutions are missing critical information, and may create negative impacts on the ecosystem and society.



**/WHAT IS ASSESSED HERE:
HOW YOU NOTICE YOUR OWN PACE,
AND HOW YOU BALANCE RAPID
RESPONSE WITH MAKING TIME TO
PONDER AND REFLECT BEFORE
ACTING. AND HOW THIS MAKES
YOU FEEL.**



What this tells you:

This graph shows only one dimension – cognitive - meaning that you have an intellectual understanding about this aspect. We don't have enough data to report on your behaviors or feelings about this topic.

YOUR SMI RESPONSES INDICATE THAT you seem to have a sense that we are collectively trapped in an accelerated pace.

Perhaps you notice your own speed, or see it in others. The fact is that you observe and seem to think about this phenomenon, and may be asking yourself about the cost of this upon you or others.

How is it possible to contemplate the future implications of decisions taken under the pressure of speed?

We cannot comment on your behaviors or feelings about this topic, since you indicated (by choosing "neither") that you did not find yourself represented by either of the available options.

/THOUGHTS TO PONDER WHEN YOU CONSIDER THE SM:

Because we are looking at these aspects from the perspective of a sustainability mindset, let's pause and think about what behaviors might be most effective as well as much needed.

While there is a call for urgent action about climate change and the related social and environmental problems, many modern sustainability challenges are actually the result of overlooked potential impacts. For decades, well-intended decisions were largely made by quickly identifying the best option.

But today we are understanding better that problems are complex, that solutions impact a multiplicity of future stakeholders, and that there are always consequences. Of course, it is not possible to anticipate all scenarios, but pausing and checking assumptions can be very useful to avoid future problems.

/THINK ABOUT HOW YOU CAN LEVERAGE YOUR STRENGTHS AND MANAGE SOME OF THE LIMITATIONS WHICH MAY BE HOLDING YOU BACK:

For example, what can you learn to avoid or repeat from past experiences? Can you identify in hindsight, what was at stake?

When we have more information, we can better weigh alternatives. All of this, however, is at odds with speed. We cannot both act fast and ponder carefully. The question becomes: Is decisiveness and fast action coming at an expensive price for

you and others, us, the next generations, and the ecosystem?

/HOW ABOUT YOU TRY:

Does it ever happen to you that you wish you could relax, slow down and do nothing? Does your body, your mind or perhaps your soul call for a break, less stress? If so, what message may be there for you, waiting to be heard?

Food for thought!

Reflective practices help to pause, and to ponder the situation and its implications before jumping into action.



/WHAT IS ASSESSED HERE: HOW AWARE YOU ARE ABOUT THE ANCHORS OF YOUR IDENTITY AND YOUR VALUES; HOW YOU FEEL AND ACT IN CONSEQUENCE.



What this tells you:

This graph shows only one dimension – cognitive - meaning that you have an intellectual understanding about this aspect. You are not necessarily engaging your feelings nor converting them into actions. You might use this information to explore your emotions related to this aspect of the sustainability mindset, and perhaps find ways to convert your understanding into actions.

YOUR SMI RESPONSES INDICATE THAT you believe the paradigm we have long been living with is due for a revision, because values like growth and progress may be linked to an assumption of unlimited resources, which may not be realistic.

At the same time, you don't see any pragmatic alternatives at hand. Your selections in the questionnaire indicate that you are focused on addressing your many personal obligations and challenges, and you don't have the bandwidth to

entertain seemingly 'philosophical' concerns about the future of humanity, our personal or modern values, or the planet. You are aware that your views may not be "politically correct," but this is how you see things today.

You are well aware: Certainly, you are aware that there is an increasing trend to highlight the negative consequences of progress, of capitalism, or of society in general, and this seems to make you feel uncomfortable, even upset. It is possible that you, yourself, sense a personal tension between the gravity of what we are facing as humanity and your individual bewilderment about what you might actually do to help prevent or solve the problems. For example, you may feel that climate change is too complex to be attributed to our mere daily behaviors.

In addition, the tension may put into question the values with which you were raised or grew up, and this is likely an uncomfortable experience, particularly if these values have been important for you, or are an important part of your identity. For instance, achievement, competition, being a winner, not being a loser, and success may have been important foundations of who you are. You may wonder what makes them suddenly feel wrong!?

These may be difficult dilemmas for you right now.

/THOUGHTS TO PONDER WHEN YOU CONSIDER THE SM:

Let's pause for a moment. This survey was designed around the Sustainability Mindset, which is a way of thinking and being, to optimally adapt to the moment in which we are living. This Mindset focuses on using our natural gifts to shape a better future, for ourselves and for all, the ecosystem included.

Research has proven that what may sound overwhelming, actually can be broken down into small, realistic ways to contribute to the greater good, and, as you well know, feel great at the same time. The first step is taking a fresh look at what surrounds us.

Undoubtedly, there are social and environmentally related challenges everywhere. Some happen locally, others across borders. Science has been linking many of these issues to human behaviors, such as consumption of unhealthy foods, depletion of natural resources, pollution or contamination of air, soil, and water. And we are left to deal with the consequences today, trapped in a paradigm that prioritizes values that have a negative impact, such as thoughtless consumption.

But what if we realized that some of our habits today are (unintentionally) contributing to more of these problems in the future? And vice versa: What if a change in a small habit today could do its part to shape a better future?

/HOW ABOUT YOU TRY:

Can you think of a habit of yours that might qualify? We don't know what we can do until we try. And when we put aside cynicism for a moment, we actually may feel a deep sense of joy. Sometimes we shift our values because of a new experience. Worth trying?

When we explore our personal values, beliefs, assumptions, and motivations, we gain greater control over our actions, and we can see new alternative behaviors.





/SPIRITUAL INTELLIGENCE

The spiritual orientation to Nature, to ourselves and to others are key factors for a Sustainability Mindset, as they impact the quality of our actions.

**/WHAT IS ASSESSED HERE:
HOW YOU EXPERIENCE NATURE,
HOW YOU UNDERSTAND THE
HUMAN RELATIONSHIP WITH
NATURE, AND YOUR RELATED
FEELINGS AND BEHAVIORS.**



What this tells you:

This graph shows that your approach to the assessed topic is both cognitive and affective. We don't enough have data to report about your behaviors and whether or how your understanding and feelings are converted into actions.

YOUR SMI RESPONSES INDICATE THAT you think of Nature as an experience that offers more wisdom than we can intellectually grasp. You see the limitations of pure rationality, and realize that the intellectual capability is valuable for building scientific knowledge, but also frequently overstated.

You realize that our comprehension of the natural world, including our bodies, has certainly advanced over time, but in the history of science findings are always within the constraints of available instruments, paradigms or assumptions. It is clear to you that over time, the development of more precise measurement techniques or revolutionary thinking

has revealed the myopic or biased conclusions of the past!

/THINK ABOUT HOW YOU CAN LEVERAGE YOUR STRENGTHS AND MANAGE SOME OF THE LIMITATIONS WHICH MAY BE HOLDING YOU BACK:

Your understanding may be the result of some special moments, when you stood in awe admiring Nature, your heart perhaps filled with joy and some kind of wordless experience of beauty. We cannot comment on the impact that this understanding has upon your behaviors, since you indicated (by choosing "neither") that you did not feel represented by either of the available options.

However, the combination of your choices in this questionnaire seem to show that those powerful moments created a disposition towards empathy. How do you manage the tensions of living in a context that mostly rewards rational thinking and intellectual capabilities?

/THOUGHTS TO PONDER WHEN YOU CONSIDER THE SM:

Research has indicated that the experience of oneness with Nature has a direct connection to shaping a more sustainable society and planet. However, you know this is not yet mainstream.

According to a 2018 United Nations study, over 55% of the world's population lives in urban areas, a proportion that is expected to increase to 68% by 2050. As a result, for many of us, the disconnection from Nature is rather "natural." Hectic life in large cities makes it difficult for us to remember that we are more than individuals moving through traffic and buildings.

You know it well: We need to re-connect with Nature and re-establish the experience of oneness that has been lost, causing not only spiritual alienation but also the artificial separation from the ecosystem. It has been found related not only to spiritual alienation, but is the root cause for many unsustainability behaviors.

When we understand something, we start caring for it. Understanding that we are one with Nature is a sensorial, intuitive experience. It is not something to be learned, but rather something that we allow to occur, and which makes us remember the sense of oneness we have always known, but had forgotten.

Understanding that we are one with Nature, a species within species, is a powerful spiritual experience that can shape behaviors leading to a more harmonious relationship with each other and all beings.



/HOW ABOUT YOU TRY:

Sometimes we realize that our thinking, feeling and acting are not fully aligned. When we notice it, we may feel discomfort and tension- something out of sync. A sustainability mindset is not just harmony with the ecosystem, but rather starts with harmony within ourselves.

How do you describe your own balance between what you think and value, how you feel and act with respect to Nature? Is there something you need to revise, to feel more authentically who you are? Is there a part of you that is still clinging to an old paradigm? Why might that be so?

**/WHAT IS ASSESSED HERE:
HOW YOU THINK ABOUT THE
MEANING, ROLE AND VALUE OF
MINDFULNESS AND ITS PRACTICE,
AND HOW YOU FEEL ABOUT IT.**



What this tells you:

This graph shows that your approach to the assessed topic is both cognitive and affective. We don't enough have data to report about your behaviors and whether or how your understanding and feelings are converted into actions.

YOUR SMI RESPONSES INDICATE THAT you have a clear understanding of the world we live in and the importance of mindfulness.

You realize that consumption is rewarded, linking “who we are” with “what we do, have, or own”. You see this materialistic pattern in society, with its consequences on how we have to keep busy doing things, seeking to make money to be able to belong, feel respected and valued. You realize the unfortunate impact that this implicit message has on our health and well-being. It's like being

trapped in a race to pursue an elusive and short-lived happiness.

We cannot comment on how your thinking impacts your behaviors, since you indicated (by choosing "neither") that you did not feel represented by either of the available options.

However you seem to experience the tension and stress that comes with the reality you are living. According to your choices in the questionnaire, you have discovered a way to pause and re-center, experiencing a positive impact on how you feel about yourself, and how you interact with others.

It is not clear what strategies you employ to regain your inner calm. Pausing and stepping away from our tasks clears our mind, and we can return with renewed energy. Is this something you remember to do when you need it? If not, how could you help yourself remember it more regularly, or just in time?

/THINK ABOUT HOW YOU CAN FURTHER LEVERAGE YOUR STRENGTHS AND MANAGE SOME OF THE LIMITATIONS WHICH MAY BE HOLDING YOU BACK:

Given what you notice about the “achievement race” that we live in, how does this align with your experience, and with your values? Does your reality reflect the priorities that are important for you? If not, what are some small changes you might make?

Studies show the physical and emotional consequences of a constant focus on doing, while overlooking the more profound dimensions of “being,” such as reflection, spiritual or religious practices. We all need time to recharge, and to connect with our deeper self.

It may be as simple as going for a walk, listening to your preferred music, dancing, practicing a sport, playing with children or your pet, gardening or creating art.

If these are some of the activities that help you unwind, you are on the right path already. They are called “contemplative practices” because they engage a different part of our brain, creating a ‘buffer zone’ that permits releasing tensions, and many times we end up seeing our challenges in a different light.

/THOUGHTS TO PONDER WHEN YOU CONSIDER THE SM:

From the perspective of a sustainability mindset, mindfulness is both a key practice and an amazing result. Research has shown a direct link between individuals that have some contemplative practices not just with their physical and psychological health, but also with the emergence of feelings of empathy and compassion.

This creates a disposition towards positive social and environmental actions, and the resulting satisfaction feeds a positive reinforcing loop. In other words, the better we feel about something we’ve done, the more we seek to repeat the experience.

When we access and display a more balanced version of ourselves, we convey an unspoken message to the people with whom we interact, not just by what we say or how we behave, but through our attitude and energy. This has a proven positive influence on others, as science has identified with the phenomenon of “emotional contagion.”

In other words, when we develop a sense of peace for ourselves, we are also radiating a gift of peace to the world.

You already know that.

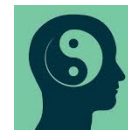
/HOW ABOUT YOU TRY:

What is mindfulness for you today: Is it a practice or does it form a part of your lifestyle?

What would need to be true for you to take it to the next level, and what might that look like for you?

How easy is it for you to “catch yourself” in the moment when you are not fully present, not mindfully listening, or letting your emotional reactions control you, as opposed to your wiser self?

Mindfulness is being fully present, experiencing connectedness with all that is. Mindfulness enhances awareness and compassion, and predisposes to social and environmental actions.



**/WHAT IS ASSESSED HERE:
WHAT YOU THINK ABOUT HAVING A
PURPOSE IN LIFE, PARTICULARLY
SOMETHING THAT IS IN SERVICE TO
OTHERS; HOW THIS FITS YOUR
REALITY AND HOW YOU FEEL ABOUT
IT.**



What this tells you:

This graph shows only one dimension – cognitive - meaning that you have an intellectual understanding about this aspect. We don't have enough data to report on your behaviors or feelings about this topic.

YOUR SMI RESPONSES INDICATE THAT you think it is important to find a purpose in life, to identify something that, by making a difference, makes our life meaningful.

We cannot comment on how these thoughts impact your behaviors and feelings, since you indicated (by choosing "neither") that you did not feel represented by either of the available options.

/THINK ABOUT HOW YOU CAN LEVERAGE YOUR STRENGTHS AND MANAGE SOME OF THE LIMITATIONS WHICH MAY BE HOLDING YOU BACK:

Research has shown that individuals who engage in activities of service to the community, volunteering or some kind of initiative for the greater good have a higher sense of wellbeing than those who do not. This includes benefits to health, feelings of joy, increased self-esteem, and personal satisfaction.

In contrast, you may have personally experienced that focusing on the extreme demands of your life sometimes takes a toll on your health, your mood, creating tension or anxiety, disrupts your sleep or impacts how you interact with others. Perhaps sometimes you don't feel happy with yourself or with others. Have you asked yourself what you could do to feel better, to lower your stress? Perhaps you have, but the answer you found may have been that as long as your demands remain high, there is not much you can do.

So here, again, are some questions to evaluate:

Which of the activities that you engage in are a necessity, a "must-do," and which ones represent a choice? Who would do these activities if it were not you? What would it take to let go of some activities, or perhaps of "how" you do them?

These questions have an agenda: to help you free up some time and space to try out a different experience, one that consists of something you do for others outside your inner circle.

/THOUGHTS TO PONDER WHEN YOU CONSIDER THE SM:

The research regarding core aspects for a sustainability mindset identified the role of activities intentionally done for the “greater good.” The state of our planet is such that it requires each of us to step up and play an active role in shaping a better world.

The actions needed, whether large or small, share a similar result: they provide us with a feeling of joy, which then we want to replicate to feel good again, thus creating a reinforcing loop. Interestingly, we tend to think that we need to take care of ourselves first, before helping others, but the facts show that when we do small acts of kindness for others, we feel much better ourselves.

/HOW ABOUT YOU TRY:

With this in mind, what are some experiments you are willing to try? What are some things for the greater good that you have already done, and perhaps could repeat, do regularly, or improve?

Don't be intimidated by lofty phrases like “changing the world” or having a life's mission or purpose. In fact, each small act of kindness comes with an impact that we may never be able to imagine. That also changes the world, one positive interaction at a time.

Defining our purpose provides an unconscious compass, and when it is grounded in values of our higher self, we actively shape a better world.



[Please click HERE](#)

and provide us with a brief (1 min) Feedback.

Thank you!

