



Sustainability
Mindset
Indicator®

**/REPORT
PREPARED FOR:
2024UniNe-8323
03/Feb/2025**

*If for every dollar in minute that we invest in AI, we invest another dollar in developing our own consciousness, our own mind, we will be ok. **Yuval Noah Harari***

FOOD FOR THOUGHT.

How ready do you feel you are to deal with the complexity we are living in? How do you respond to the increasing polarization, to the need to expand our attention to stakeholders impacted by our daily decisions? How comfortable are you planning and yet letting go of your plans as you consider the feedback that reality is giving you? How easy is it for you to adapt, revisit your assumptions, unleash your creativity, and innovate?

These are some of the key indicators of resilience.

We find comfort in our plans, in the 'known and tried out' ways of doing things. Yet this may also be the obstacle that slows us down when we need to find new ways of acting that have a better impact on the world. While much is talked about the future that awaits us, it's easy to forget that it is *us*, each one of us, who is shaping this future with our daily decisions and actions. Yet, rushed as we all live in these demanding times, we may not take the moment to pause, observe where we are, what our most precious goals and values are, and how our day, today, is reflecting those values, leading us to those goals. And what course corrections we may want to do!

This is the Era of Purpose. How mindful are you of your larger purpose? Setting a purpose becomes the compass offering certainty in a world filled with uncertainty. Are you giving yourself the gift of a pause, to ask yourself what your larger, higher purpose could be?

You may recognize in these lines some aspects that were addressed in the statements offered to you in the Sustainability Mindset Indicator, as you were invited to reflect and choose which best represented you. This report constitutes a picture, a map of your personal journey towards a resilient, purposeful, creative mindset for flourishing as an individual, making a difference in the world. Which is sustainability at its best.

Let this report be a gift for your soul.

Welcome to your Personalized Report. This Report is based on your selections on the SMI. It is meant to be a personal development tool, to highlight aspects of your understanding, behaviors and feelings related to your Sustainability Mindset (SM).

You will find observations that you may identify with, others that you vaguely recognize, and others that perhaps don't resonate with you. Keep what you need and what makes sense to you.

You will also find questions to consider, suggestions for things you can try, and information related to the aspects covered in this report, and how these are related to the Sustainability Mindset.

Take your time reading your Report. Pause, take notes, and reflect. It is all about you, and for you. There were no wrong answers in the survey. Only good options and perhaps some that you hadn't thought of.

/WHAT YOU WILL FIND IN THE FOLLOWING PAGES

This Personalized Report is organized into several sections. The first section contains a graph, displaying how the different aspects assessed compare to each other, according to your choices in the survey. Those that occupy a larger area are your stronger ones and the narrower or missing ones are aspects of the Sustainability Mindset that are less developed or absent for you, as inferred from the combination of your answers.

The next section presents personalized descriptions of where you find yourself on your journey towards a Sustainability Mindset, in four clusters: Ecological Worldview, Systems Perspective, Emotional Intelligence, and Spiritual Intelligence.

Within each of these clusters you will find what aspects were assessed, and a graph for each aspect displaying how you connect to this topic, whether intellectually, through your actions and behaviors and/or by engaging your emotions.

If you see some areas missing within the graph, it means that either you selected “neither” for that question and therefore we don’t have information to report on, or your answers suggest you don’t engage in one or more areas (cognitive, behavioral, or affective). Similarly, if you selected “neither” for all the questions within one Sustainability Mindset Principle, we don’t include a graph, since we don’t have information to report on.

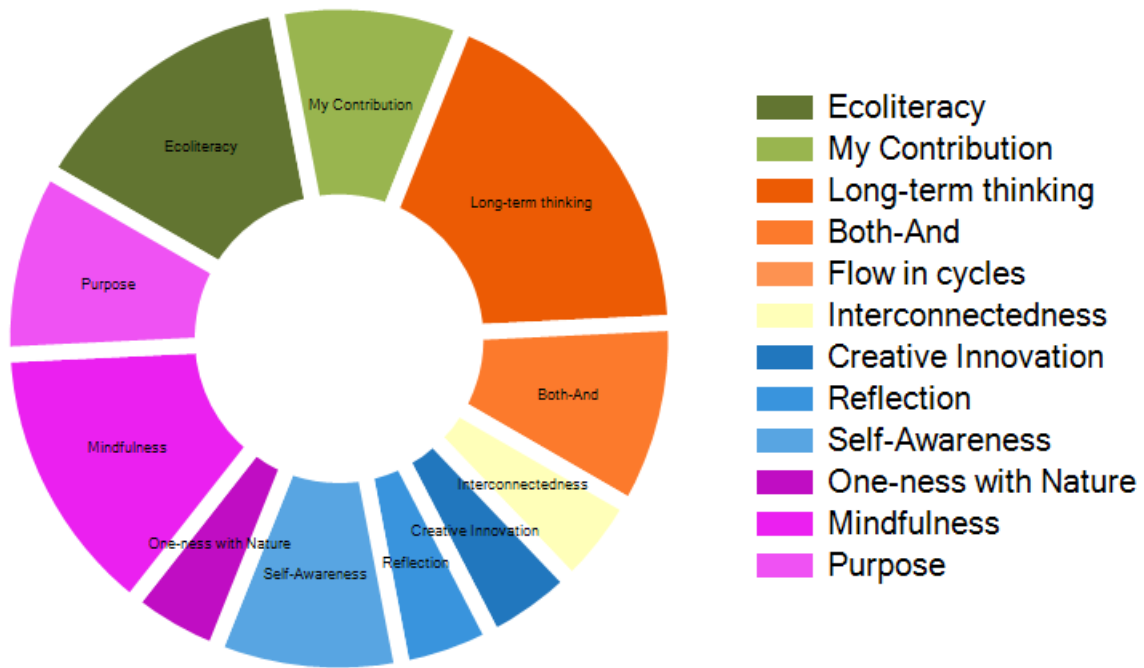
Each graph is accompanied by a box with a brief explanation, and you will find much more information in the text to include what your choices suggest, why this Principle is key for a sustainability mindset, and questions to ponder and suggestions to try.

Enjoy your journey into the realm of the Sustainability Mindset - a place where you can be your best, for yourself and for the World.

The SMI Team

**/ Your overall SUSTAINABILITY
MINDSET PROFILE**

The graph below shows your personal profile, indicating how – relatively to each other – you have developed your Sustainability Mindset. The wider sections indicate your stronger areas, and vice versa.





/ECOLOGICAL WORLDVIEW

An ECOLOGICAL WORLDVIEW is the result of having an intellectual and affective broad understanding of the planetary challenges, how they are interrelated, and how we are contributing to them.

/WHAT IS ASSESSED HERE: HOW YOU UNDERSTAND THE ENVIRONMENTAL AND SOCIAL CHALLENGES, AND HOW YOU FEEL ABOUT IT, AND THE IMPACT ON YOUR BEHAVIORS.



What this tells you:

This graph shows that your approach to the assessed topic is both cognitive and affective. We don't enough have data to report about your behaviors and whether or how your understanding and feelings are converted into actions.

YOUR SMI RESPONSES INDICATE THAT you have a good understanding of the complexity of the planetary challenges we are facing, and how they are interrelated.

In addition, you seem to be socially sensitive and have empathy for the suffering of others. This may be creating some emotional stress, perhaps feelings of being overwhelmed by a reality that you think you cannot change.

But is it really so, that you cannot influence and make a difference?

**/THINK ABOUT HOW YOU CAN FURTHER
LEVERAGE THOSE STRENGTHS AND MANAGE
SOME OF THE LIMITATIONS WHICH MAY BE
HOLDING YOU BACK:**

You understand the scope of the sustainability challenges, from the environmental and social perspective; you notice linkages, relationships and connections. The other powerful path is in your emotions. Your social sensitivity is a special gift.

We cannot comment on your behaviors, since you indicated (by choosing "neither") that you did not find yourself represented by either of the available options. Are not connecting what you know and how you feel, with actions or behaviors that could contribute to greater sustainability?

You have an opportunity there to put your unique gifts and passions to use for the greater good. When we allow ourselves to connect from the heart with the reality of the news and find small ways to change our behavior, we are more present and don't need to live with our divided selves. This can be more fulfilling.

/THOUGHTS TO PONDER WHEN YOU CONSIDER THE SM:

We are definitely living in a time of information overload. It is challenging to stay on top of all that is happening, while keeping up with our own obligations and activities. Furthermore, sustainability news tends to be on the negative side, creating doomsday scenarios and scary prophecies that can trigger anxiety, make us feel bad, sad, or worried.

Yet we tend to underestimate our own power and influence in shaping a better world. As a matter of fact, if the challenges we are currently experiencing are a product of past problematic behaviors, then we are also positively shaping the future of the planet with our current mindful decisions and restorative actions. That opens an interesting path. You understand the scope of the sustainability challenges, from the environmental and social perspective; you notice linkages, relationships and connections.

/HOW ABOUT YOU TRY:

Here are some suggestions to ponder: What are things you are good at that you aren't incorporating into your sustainability contributions? Who could benefit and where from your gifts and talents and possibly your passion? What do you see as your next frontier of development?



Understanding the state of the planet allows us to be more fully aware of the challenges, the complexity of how they are linked to each other, and to explore what it means to us.

**/WHAT IS ASSESSED HERE:
HOW YOU SEE THE RELATION
BETWEEN INDIVIDUAL DECISIONS
AND PLANETARY CHALLENGES, HOW
YOU FEEL ABOUT IT AND THE
IMPACT ON YOUR PERSONAL
BEHAVIORS.**



What this tells you:

This graph shows the two dimensions of cognitive and behavioral, meaning that you have an intellectual understanding of this aspect, and you also act upon it. We don't have enough data to report if or how you connect with your feelings related to this item.

YOUR SMI RESPONSES INDICATE THAT you periodically ponder if you are personally playing a role in the world's social or environmental problems of the world.

Certainly, you didn't create the problems intentionally, but you seem to pause and wonder in what ways you may be contributing to them.

/YOU ARE COMFORTABLE WHEN you can take a proactive role. Instead of remaining "the victim," you choose to act. You find small ways in which you are contributing to the problems and seek out those changes you could make to be less

a "part of the problem" and become part of the solution. This is a wonderful start.

/THINK ABOUT HOW YOU CAN FURTHER LEVERAGE THOSE STRENGTHS AND MANAGE SOME OF THE LIMITATIONS WHICH MAY BE HOLDING YOU BACK:

The more you observe, the more opportunities you will find to make a real difference with a few simple changes to your behavior and habits.

We cannot comment on your feelings about this topic, since you indicated (by choosing "neither") that you did not feel represented by either of the available options.

/THOUGHTS TO PONDER WHEN YOU CONSIDER THE SM:

Thinking of how we are personally contributing to the planetary challenges may not be something we do daily. Our demanding lives have many obligations and don't leave much time for reflecting on this. We are busy getting things done!

Yet when analyzing the current un-sustainability of our planet, science has clearly established a link between human behaviors in past decisions and the current problems we face. Much attention is now focused on how to repair the damage done, and how to restore damaged, depleted or endangered resources. Scientists and entrepreneurs study how to minimize current or future problems at the environmental or social level, and how to innovate to avoid negative impacts into the future.

If we collectively influenced the place, we find ourselves in now (with all its problems), that means we also hold the key to influence where we will collectively be in the future – we: meaning humankind at large, or, from a closer perspective, our families, children, and grandchildren.

/HOW ABOUT YOU TRY:

What if we could develop the habit of asking ourselves periodically: *how am I contributing to this problem?* This question opens a path of inquiry, which automatically leads to expansion of our consciousness. We become more alert to take notice, and thus more open to try out new behaviors.

This same question, by the way, is also a powerful tool that can improve our relationships and interactions with others! So often we focus on what others are doing unto us, which leaves us powerless. When we learn to pay attention to what is our role in the problems we endure, we regain control and can actually do something.

Actively thinking about your contribution is definitely an important milestone in your personal development, with planetary implications.



When we identify the ways in which we are unintentionally contributing to the problems, we have a chance to do something about them. It also expands our consciousness and develops social sensitivity.



/SYSTEMS PERSPECTIVE

When analyzing information and making decisions a SYSTEMS
PERSPECTIVE has a major impact on the sustainability of our actions.

**/WHAT IS ASSESSED HERE:
HOW YOU THINK ABOUT THE LONG-
TERM IMPACT WHEN ANALYZING
AND MAKING DECISIONS,
COMPLEMENTING SHORT-TERM
THINKING; HOW YOU FEEL ABOUT
IT, AND THE IMPACT ON YOUR
BEHAVIORS.**



What this tells you:

When the graph is well balanced, it means that you have a good understanding of the aspect of the Sustainability Mindset being assessed, that you are able to connect with your feelings about it, and that you tend to act upon what you know and feel. This is a good start, and you might want to think about circumstances or contexts in which you would like to act more, understand better or further explore your feelings.

YOUR SMI RESPONSES INDICATE THAT you have a good understanding of the long-term sustainability impacts that our decisions may have, even the simple and daily ones, not to mention behaviors commonly accepted in our society.

In addition, this understanding is not indifferent to you: You are a sensitive person who seems to get worried about the long-term impact that your decisions or lifestyle may be having on the planet. It is difficult to live with this feeling!

/YOU ARE COMFORTABLE WHEN you convert the emotional motivation into actions. In this case, you seem to have a natural tendency to think of “what ifs” and the long-term consequences of possible decisions before taking them.

This may not always be welcome in a team setting, but from the perspective of shaping a sustainable world, this contribution is a great asset to yourself and to your working groups. Your perspective will likely enrich actions, as they result from considering potential impacts in the longer term.

You probably sense that the world around demands a fast pace, decisiveness, focusing just on the tangible short term and continues as if no such thing as a long-term impact would be realistic. But change never starts as mainstream, and you may be showing a new way of doing things – for the sustainability of the whole.

/THOUGHTS TO PONDER WHEN YOU CONSIDER THE SM:

There is definitely a tacit pressure to act promptly and focus on that which needs immediate attention. This is very important, and there are many circumstances where this way of responding is the optimal, or even the only one that matters. A fire in the house, for example. We can sense the urgency and it is not a good idea to pause and reflect on the long-term implications of the fire.

But for many daily decisions the context is different, and yet we still prioritize short-term thinking, often without even weighing any medium- or long-term impacts of what we are doing. The stream of life, our colleagues, perhaps everyone with whom we interact takes for granted that we “all” act this way.

On the other hand, with greater understanding of the social and environmental problems we are facing, it has become clear that the law of cause-and-effect is always at play, even if not immediately obvious. In

other words, the consequences of our daily actions do have impacts - some over time, some just in a different geography, and many on both.

As with other aspects which are key for a sustainability mindset, it is not a question of choosing one over the other, but a matter of balancing both views and taking both time horizons into account.

This mental habit expands our consciousness, as we become more aware of the way we are impacting others and the world. Not thinking about this doesn't stop it from happening. Stretching our imagination to consider potential impacts across time helps us make better decisions, and play a more active role in shaping a better world.

This is something about which you seem to know quite a lot.

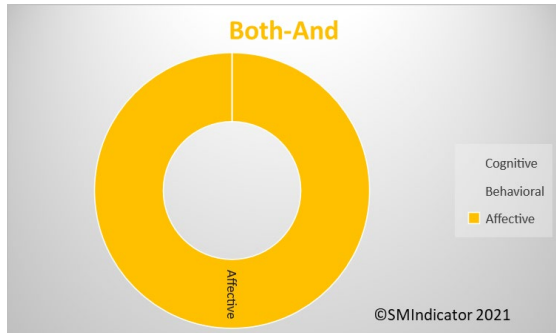
/HOW ABOUT YOU TRY:

How comfortable are you bringing the long-term perspective into the conversation? Do you sense that sometimes you hold back, because it is not so popular? Are you fully aware that your perspective, by not being culturally mainstream, is what we all need more? Is this something that may encourage you further to speak up?



Every action has consequences that are not immediately visible. Considering the long-term when analyzing situations and making decisions has a positive impact on global sustainability.

**/WHAT IS ASSESSED HERE:
HOW YOU THINK ABOUT AND DEAL
WITH AMBIGUITY AND PARADOXES,
HOW YOU RECOGNIZE DIVERSITY,
FEEL ABOUT IT AND ACT TOWARDS
IT.**



What this tells you:

This graph shows the affective dimension, meaning that you connect emotionally with this aspect, without necessarily having full understanding about it. We don't have enough data to report if or how your feelings impact your behaviors related to this aspect.

YOUR SMI RESPONSES INDICATE THAT you are an empathetic person, and it comes easily to put yourself in another person's shoes, trying to see life from their point of view, as puzzling as it might be. It makes you feel good when you do so - in a way you feel closer to the other.

/YOU ARE COMFORTABLE when you are inclusive since not being inclusive may make you feel guilty, selfish, righteous, or irresponsible. This is your internal compass.

At the same time, you are also aware that when one starts to be inclusive of other people's perspectives, we may lose sight of what we hold true and right, thus not fully honoring the responsibility we feel to champion these values.

We cannot comment on how your feelings and thinking impact your behaviors, since in the questionnaire you indicated (by choosing "neither") that you did not find yourself represented by either of the available options.

**/THINK ABOUT HOW YOU CAN FURTHER
LEVERAGE YOUR STRENGTHS AND
MANAGE SOME OF THE LIMITATIONS
WHICH MAY BE HOLDING YOU BACK:**

The combination of your natural empathy towards others, and your desire to have clear distinctions of what is right and wrong probably doesn't make your life easy. Simplifying complexity is helpful for avoiding gray areas, but you sense that you also miss understanding the complexities of the situation. Many of our world's sustainability challenges originate in choices such as: "either the planet or the economy" and "either protect the wolves or the farmer." Yet, either-or choices can be misleading, and have us believe there are win-lose solutions that work. But do they really? If the cost is high, do they still work?

It is reassuring to find ourselves in a situation where we see it the right way, and others are wrong. But at the same time, you sense that we may be missing what these others are seeing, that we don't. How could we all benefit from having a fuller picture?

Now, in what areas does empathy and inclusion come easier to you, and which situations are more challenging? This is your work.

/HOW ABOUT YOU TRY:

The combination of your natural empathy towards others, and your desire to have clear distinctions of what is right and wrong probably doesn't make your life easy. Simplifying complexity is helpful for avoiding gray areas, but you sense that you also miss understanding the complexities of the situation. Many of our world's sustainability challenges originate in choices such as: "either the planet or the economy" and "either protect the wolves or the farmer." Yet, *either-or* choices can be misleading, and have us believe there are win-lose solutions that work. But do they really? If the cost is high, do they still work?

It is reassuring to find ourselves in a situation where we see it the right way, and others are wrong. But at the same time, you sense that we may be missing what these others are seeing, that we don't. How could we all benefit from having a fuller picture?

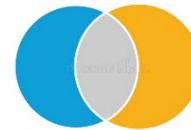
/THOUGHTS TO PONDER WHEN YOU CONSIDER THE SM:

It seems that today, more than ever, we are collectively being confronted with paradoxes and ambiguity. Increased transparency and access to information from around the world makes us aware of very different ways of thinking, being and acting with which we may not agree or be comfortable.

Challenging as this may be, there is a benefit to it: We are becoming aware of our own worldviews just by realizing that there are other ways of seeing and feeling. This is an evolutionary insight of great value, the foundation for more peaceful societies. In a way, life is prompting us to expand our understanding and our scope of caring, which go hand in hand.

When we understand something, we can begin caring. This is the start of a better world for all.

Now, in what areas does empathy and inclusion come easier to you, and which situations are more challenging? This is your work.



Both+and thinking allows us to understand paradoxes and calls for creative solutions that are inclusive of all stakeholders.

**/WHAT IS ASSESSED HERE:
HOW YOU BALANCE YOUR CAPACITY
TO ANALYZE AND PLAN WITH THE
UNDERSTANDING OF NATURAL
CYCLES, AND MAKE THEM PART OF
YOUR MINDSET.**

YOUR SMI RESPONSES INDICATE THAT you are a person who is profoundly committed to actions, who enjoys the challenges life offers, and looks at them as opportunities to find intelligent solutions. Indeed, intellectual abilities are important for you, as they permit you to control difficult situations.

/YOU ARE COMFORTABLE crafting plans and setting goals to measure your progress. And if a problem is beyond your control, as many sustainability-related problems are, you rely on those who are capable of solving them. You strongly believe and trust in human ingenuity to figure out solutions for our environmental or social problems.

This allows you to feel empowered and in control, which is a nice feeling, particularly as it avoids the stress of uncertainty. You seem to enjoy making plans and implementing them, and derive a sense of fulfillment and satisfaction when you achieve the goals you set for yourself.

**/THINK ABOUT HOW YOU CAN
FURTHER LEVERAGE THOSE
STRENGTHS AND MANAGE SOME
OF THE LIMITATIONS WHICH MAY
BE HOLDING YOU BACK:**

While planning is a way to feel in control of situations, it is constantly challenged since life -

with its countless variables - is too complex to be managed.

Do you experience frustration at times when things don't work out as you planned, or expected? How do you react? Do you let go of your plans and observe what the events are telling you, or do you use persistence and incremental efforts to stay on top of your planned course?

**/THOUGHTS TO PONDER WHEN YOU
CONSIDER THE SM:**

You may be wondering why planning is related to several key aspects for a sustainability mindset. The connection is not in the planning as an activity per se, but in the way we think and process information when we plan. Planning is about organizing and structuring in order to control outcomes. Planning is linear by definition -one step after the other - and it assumes cause-effect relationships. But what about multi-effects, multi-causes, and feedback loops?

Contrast this with the sustainability problems we are facing. To begin with, they are complex and multidimensional by their very nature. Many are the result of our linear thinking, for example we believe that we can pursue unlimited growth, yet depletion of natural resources shows us this is not possible.

Our reliance on the human mind can create a collective assumption that we are in control, but a "small" manifestation like Covid-19 arrives as a surprise to debunk the myth of our own superiority.

/HOW ABOUT YOU TRY:

Planning in itself is not the problem but rather, excessive reliance on carefully crafted steps. How do you incorporate the cycles of nature into your planning? As an example, do you accept phases of

growth and decline - aging and impermanence, along with endings and mortality followed by new beginnings and birth? How do you incorporate humanity as part of Nature, rather than its controller?

Many implications, indeed.

Here a few thoughts to ponder. Do you see yourself balanced in terms of making and letting go of plans? How do you balance structure and flow, organization and flexibility?

Relaxing your grip on plans may cause uncertainty, yet like swimming along with the river's current, it can also increase your speed, and reduce the stress of resisting obstacles. Worth a try.

There are no linear processes in Nature: Everything flows in cycles of birth, growth, death, and rebirth.

Many aspects of man-made unsustainability of the planet are a result of the misconception that we are not governed by this law of Nature.



/WHAT IS ASSESSED HERE: HOW YOU UNDERSTAND AND EXPERIENCE INTERCONNECTEDNESS, VERSUS VALUES LIKE AUTONOMY AND INDEPENDENCE.



What this tells you:

This graph shows only one dimension – behavioral - meaning that you are action- oriented, without much engagement of your feelings and without necessarily thinking about this aspect intellectually. You might use this information to seek ways to expand your understanding and explore your emotions.

YOUR SMI RESPONSES INDICATE THAT you believe independence and autonomy are very important aspects of human life, perhaps as a combination of a given right, a personal goal and a precious virtue to cultivate. They signify ownership and accountability to you.

Additionally, you enjoy the adrenaline of the challenges that motivate you. The excitement of seeking to be successful, to win or to outperform others is a pleasant feeling for you.

Recognition may be a reward, but it is not always external: it can also be for your personal satisfaction and sense of accomplishment. You feel

proud of your achievements and perceive them as a validation of your autonomy and personal capabilities in action. It is important for you to be self-sufficient as much as possible.

Interestingly though, your choices in this questionnaire indicate that, in your actions, you actually see yourself as part of a larger whole, which may mean that you pay attention to the impact of your behaviors on others. This may create a certain tension, for example when you want to make progress on something, yet you also have to consult with others, for example stakeholders. How do you handle this tension?

/THINK ABOUT HOW YOU CAN FURTHER LEVERAGE YOUR STRENGTHS AND MANAGE SOME OF THE LIMITATIONS WHICH MAY BE HOLDING YOU BACK:

This combination of aspects may come at a price. It is not always possible to live up to other people's expectations, not to mention our own, which often are even higher. Furthermore, in many settings where teamwork or collaboration is expected, it may be challenging to balance your individual performance with the collective contributions, and your personal efforts, gifts or skills may go unrecognized, or possibly even unappreciated.

/THOUGHTS TO PONDER WHEN YOU CONSIDER THE SM:

You may not have given it much thought, but the polarities of independence vs. interconnectedness and competition vs. collaboration are of particular relevance when focusing on sustainability. To begin with, the environmental and social challenges are complex and multidimensional, making it impossible for any one person to solve on their own. It is only through collective thinking, action and the collaboration of multiple

stakeholders that we will be able to develop alternatives. (This, by the way, makes sustainability a great opportunity for contributing personal skills to a larger cause).

While certain cultures have a collectivistic framework, most of the western-northern culture - widely exported and globalized - is individualistic and celebrates personal achievement. However, is this realistic and even feasible?

/HOW ABOUT YOU TRY:

Let's pause for a moment: Can you name one achievement that was purely and authentically your own without another person playing any role in it?

We invite you to explore what success and autonomy mean for you. What are the roots of these values for you, perhaps in your upbringing or in your current context? Are they authentically a priority for you, or are they something automatically inherited, or adopted without giving it much thought?

When we see interconnectedness, we understand the importance of diversity, and our decisions and actions become more inclusive, which contributes to the sustainability of the whole.

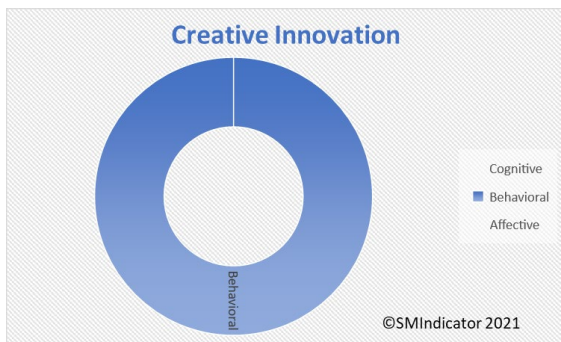




/EMOTIONAL INTELLIGENCE

Understanding ourselves through the anchors of our identity, the pace of our life, and how we consider our intuitive wisdom are key for a sustainability mindset.

**/WHAT IS ASSESSED HERE:
HOW YOU INCORPORATE NON-
RATIONAL INFORMATION, INTUITIVE
KNOWING, CREATIVITY AND
IMAGINATION IN ORDER TO
BALANCE RATIONAL THINKING, AND
HOW YOU FEEL ABOUT IT.**



What this tells you:

This graph shows only one dimension – behavioral - indicating that you are action- oriented without much engagement of your feelings. You might use this information to explore your emotions.

We don't have enough data to report on your understanding about this aspect.

YOUR SMI RESPONSES INDICATE THAT you enjoy order and dislike the uncertainty of chaotic situations.

You feel most comfortable when you can think things through, following proven steps and organizing reality into priorities.

We cannot comment on your thinking about this topic, since you indicated (by choosing "neither") that

you did not find yourself represented by either of the available options.

Interestingly, at the same time, it seems that you have found yourself in situations where you made great contributions by putting your "creative hat" on, by being playful, by not preemptively censoring your ideas, and even tolerating the uncertainty of not knowing how something will work out.

You seem able to live with a certain degree of risk-taking, and based on your answers, that worked well for you. How did that feel?

/THOUGHTS TO PONDER WHEN YOU CONSIDER THE SM:

You may notice that the sustainability challenges we are facing are largely new, and as COVID-19 taught us, increasingly situations arise for which we don't have previous experience or science on which to rely. We have become more aware of the complexity of our challenges, and we are skeptical of simplistic solutions.

However this also requires entry into uncharted territories. Resilience calls for flexibility in adapting to new situations, and this entails innovating and experimenting. Having no plans or blueprints to follow may be unsettling, and the only choice is to take some risks.

/THINK ABOUT HOW YOU CAN FURTHER LEVERAGE YOUR STRENGTHS AND MANAGE SOME OF THE LIMITATIONS WHICH MAY BE HOLDING YOU BACK:

These seem to be your current challenges: How can you feel more comfortable trying and experimenting without knowing? Here is a thought to consider: What have you learned about yourself through those

positive experiences when you made valuable contributions thanks to your creative imagination? In what conditions were you able to act in that way? What could you learn and replicate from those circumstances? What would have to be true and how can you influence this?

/HOW ABOUT YOU TRY:

It seems that you have a reservoir of imagination available to tap into, and perhaps intuitive wisdom as well. How can you trust a bit more this unique gift? It certainly can help complement your strategic thinking, and maximize your achievements for the benefit of all.

Resilience is based on constant creativity, innovation, and experimentation. When we neglect the non-rational wisdom we have in us, our solutions are missing critical information, and may create negative impacts on the ecosystem and society.



**/WHAT IS ASSESSED HERE:
HOW YOU NOTICE YOUR OWN PACE,
AND HOW YOU BALANCE RAPID
RESPONSE WITH MAKING TIME TO
PONDER AND REFLECT BEFORE
ACTING. AND HOW THIS MAKES
YOU FEEL.**



What this tells you:

This graph shows only one dimension – cognitive - indicating that you have knowledge about this aspect, without necessarily connecting it with your behaviors. You might use this information to seek ways to convert your understanding into action.

We don't have enough data to report about your feelings on this topic.

YOUR SMI RESPONSES INDICATE THAT you have a sense that we are collectively trapped in an accelerated pace.

Perhaps you notice your own speed, or see it in others. The fact is that you observe and seem to think about this phenomenon, and may be asking yourself about the cost of this upon you or others. How is it possible to contemplate the future implications of decisions taken under the pressure of speed?

HOWEVER, YOU ARE COMFORTABLE making a quick assessment of a situation and acting promptly. You are a quick thinker, and while you may overlook some details, you consider that your decisiveness also helps stimulate those that are more hesitant. Speed is justified. You are a person adapted to the rhythm of our time!

/THINK ABOUT HOW YOU CAN FURTHER LEVERAGE YOUR STRENGTHS AND MANAGE SOME OF THE LIMITATIONS WHICH MAY BE HOLDING YOU BACK:

How do you bring together the downsides you see of our fast pace, with your own reality? Do you experience a tension, perhaps? We cannot comment on your feelings about this topic, since you indicated (by choosing "neither") that you did not find yourself represented by either of the available options.

/THOUGHTS TO PONDER WHEN YOU CONSIDER THE SM:

Since we are looking at these aspects from the perspective of a sustainability mindset, let's pause and think about what behaviors might be most effective as well as much needed.

While there is a call for urgent action about climate change and the related social and environmental problems, many modern sustainability challenges are actually the result of overlooked potential impacts. For decades, well-intended decisions were largely made by quickly identifying the best option.

But today we are understanding better that problems are complex, that solutions impact a multiplicity of future stakeholders, and that there are always consequences.

Of course, it is not possible to anticipate all scenarios, but pausing and checking assumptions can be very useful to avoid future problems.

For example, what can you learn to avoid or repeat from past experiences? Can you identify, in hindsight, something that was at stake and overlooked because you were trying to act fast? When you have more information you can better weigh alternatives. Although this requires to slow down!

Reflective practices help to pause, and to ponder the situation and its implications before jumping into action.



/HOW ABOUT YOU TRY:

According to your answers, you seem to be gifted with an intuition that something is not quite right. Does it ever happen to you that you wish you could relax more, slow down and do nothing? Does your body, your mind or perhaps your soul call for a break, less stress?

Here is a simple and challenging exercise for multitaskers like you. Set your alarm to ring once every two hours. When the alarm goes off, you pause whatever you are doing, and set the timer for 60 seconds. During that minute you close your eyes, or look out the window, just sitting in silence for a full minute. It is not a time to think of what you still need to do, or what you should be doing: it's just a gift of 60 seconds for you, to do nothing. If this is too difficult, start setting the alarm once a day, then slowly increase the times for a pause.

Noticing your pace and finding ways to slow down may not only be good for you, but also for the decisions you make, and for the planet.

**/WHAT IS ASSESSED HERE:
HOW AWARE YOU ARE ABOUT THE
ANCHORS OF YOUR IDENTITY AND
YOUR VALUES; HOW YOU FEEL AND
ACT IN CONSEQUENCE.**



What this tells you:

If a graph shows the two dimensions - cognitive and behavioral - it means that your tendency is to distance yourself from your feelings, particularly in the aspect assessed here. You have a good understanding about it, and are acting upon it, but you might want to further explore your emotions in relation to it.

YOUR SMI RESPONSES INDICATE THAT you believe the paradigm we have long been living with is due for revision.

You realize that values like growth and progress may be linked to an assumption of unlimited resources, which may not be realistic. You have been noticing that many of your automatic behaviors are actually not very environmentally friendly, or perhaps have some kind of negative social impact.

You are comfortable trying to make some changes, which probably was somewhat challenging and may not have left you satisfied with yourself.

/ THINK ABOUT HOW YOU CAN FURTHER LEVERAGE THOSE STRENGTHS AND MANAGE SOME OF THE LIMITATIONS WHICH MAY BE HOLDING YOU BACK:

Could it be that these failed attempts discouraged you from continuing to do more? You selected answers in this survey that describe a disenchantment of sorts. For example, you are aware that there is an increasing trend to highlight the negative consequences of progress, of capitalism, or of society in general, and this seems to make you feel uncomfortable, even upset.

It is possible that you, yourself, sense a personal tension between the gravity of what we are facing as humanity, and your individual bewilderment about what you might actually do to help prevent or solve the problems. For instance, you may feel that climate change is too complex to be attributed to our mere daily behaviors.

In addition, the tension may put into question the values with which you were raised or grew up, and this is likely an uncomfortable experience, particularly if these values are important for you, or have been an important part of your identity.

Achievement, competition, being a winner, not being a not a loser, and success may be important foundations of who you are. You may wonder what makes them suddenly feel wrong. These may be difficult dilemmas for you right now.

And yet this is a very important moment of awareness: change starts with our noticing some discomfort about something, and we want to do something about it to feel better (or at least less bad). In this case, you seem to have achieved this

very important step. Of course it can be overwhelming to think about the complex problems. But what if you start small?

/THOUGHTS TO PONDER WHEN YOU CONSIDER THE SM:

Let's pause for a moment. This survey was designed around the Sustainability Mindset, which is a way of thinking and being, to optimally adapt to the moment in which we are living. This Mindset focuses on using our natural gifts to shape a better future, for ourselves and for all, the ecosystem included.

Research has proven that what may sound overwhelming, actually can be broken down into small, realistic ways to contribute to the greater good, and, as you well know, feel great at the same time. The first step is taking a fresh look at what surrounds us.

Undoubtedly, there are social and environmentally related challenges everywhere. Some happen locally, others across borders. Science has been linking many of these issues to human behaviors, such as consumption of unhealthy foods, depletion of natural resources, pollution or contamination of air, soil, and water. And we are left to deal with the consequences today, trapped in a paradigm that prioritizes values that have a negative impact, such as thoughtless consumption.

But what if we realized that some of our habits today are (unintentionally) contributing to more of these problems in the future? And vice versa: What if a change in a small habit today could do its part to shape a better future?

/HOW ABOUT YOU TRY:

Can you think of a few habits of yours that might qualify? We don't know what we can do until we try. And when we put aside cynicism for a moment, we actually may feel a deep sense of joy. That alone is worth trying.

Another suggestion is that you explore the roots of some values that are important for you, such as success, winning, and outperforming others. Where can you trace their origins? Perhaps in your upbringing, or in your current context? What do they represent for you, which makes them important? Are they authentically yours, or are they perhaps inherited, adopted without giving much thought to it?

When we explore our personal values, beliefs, assumptions, and motivations, we gain greater control over our actions, and we can see new alternative behaviors.

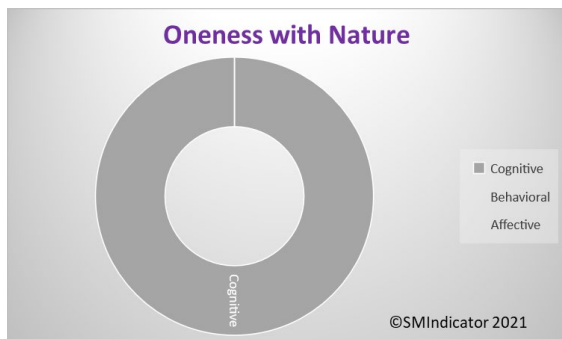




/SPIRITUAL INTELLIGENCE

The spiritual orientation to Nature, to ourselves and to others are key factors for a Sustainability Mindset, as they impact the quality of our actions.

**/WHAT IS ASSESSED HERE:
HOW YOU EXPERIENCE NATURE,
HOW YOU UNDERSTAND THE
HUMAN RELATIONSHIP WITH
NATURE, AND YOUR RELATED
FEELINGS AND BEHAVIORS.**



What this tells you:

This graph shows only one dimension – cognitive - meaning that you have an intellectual understanding about this aspect. You are not necessarily engaging your feelings nor converting them into actions. You might use this information to explore your emotions related to this aspect of the sustainability mindset, and perhaps find ways to convert your understanding into actions.

YOUR SMI RESPONSES INDICATE THAT you think of Nature as an experience that offers more wisdom than we can intellectually grasp.

Interestingly, at the same time your behaviors seem to be based on a worldview in which humans are the most evolved and intelligent species, a superiority that seems to grant humanity a utilitarian approach to natural resources.

/THINK ABOUT HOW YOU CAN LEVERAGE YOUR STRENGTHS AND MANAGE SOME OF THE LIMITATIONS WHICH MAY BE HOLDING YOU BACK:

The evolution of science has shown that findings are made within the constraints of available instruments, paradigms, or assumptions. Many myopic or biased conclusions have been revealed with the passage of time, the development of more precise measurement techniques and revolutionary thinking. Biomimicry, a discipline studying how Nature solves problems, has been highlighting the wisdom of billions of years of evolution, and suggesting that we may find more answers in Nature than through our human intellect.

In fact, indigenous people have demonstrated a more resilient lifestyle, based on an intuitive connection to Nature.

To complete the picture of how you experience the human relationship with Nature, you indicate some emotional distance, as if you might not have any specific feelings towards the natural world.

Do you really experience it in this way? Or is it, perhaps, that you find yourself so consumed by life's demands that there are little/no opportunities to pause, relax, and simply be with yourself in a natural environment?

/THOUGHTS TO PONDER WHEN YOU CONSIDER THE SM:

Certainly, many achievements and improvements of our quality of life have shown the power of the human mind. Yet we are increasingly aware that some betterments have come at a cost for the environment or society, and we are collectively paying the price, for example, soil erosion or waterway contamination from chemical crop fertilizers meant to enhance soil productivity. The human-centric paradigm that we collectively adopted and believe has begun to show some shortcomings,

inviting us to revisit our place and role in the larger ecosystem.

What are some undesirable consequences of human progress that you have personally experienced? What message may be in this for you?

According to a 2018 United Nations study, over 55% of the world's population lives in urban areas, a proportion that is expected to increase to 68% by 2050. As a result, for many of us, the disconnection from Nature is rather “natural.” Hectic life in large cities makes it difficult for us to remember that we are more than individuals moving through traffic and buildings. The common associations with the word “Nature” may be vacation time, a park, or a documentary. What about our food? Our body? The materials of every object we use? This disconnection from Nature leads to a utilitarian relationship: Nature is reduced to instrumental resources for human needs and wants.

What consequences do you see from having a utilitarian relationship with Nature?

We need to re-connect with Nature and re-establish the experience of oneness that has been lost, causing not only spiritual alienation but also the artificial separation from the ecosystem. It has been found related not only to spiritual alienation but is the root cause for many unsustainability behaviors.

When we understand something, we start caring for it. Understanding that we are one with Nature is a sensorial, intuitive experience. It is not something to be learned, but rather something that we allow to occur, and which makes us remember the sense of oneness we have always known but had forgotten.

/HOW ABOUT YOU TRY:

Sometimes we realize that our thinking, feeling, and acting are not aligned. When we notice it, we may feel discomfort and tension- something out of sync. A sustainability mindset is not just harmony with the ecosystem, but it starts within us.

It is impossible to guess your particular context, and your current priorities. But we invite you to give yourself an unusual gift: Spend an hour in Nature, on your own, without looking at your phone, and with no books, pets, or other people. If you have never experienced this, you are up for a very special treat!

Understanding that we are one with Nature, a species within species, is a powerful spiritual experience that can shape behaviors leading to a more harmonious relationship with each other and all beings.



**/WHAT IS ASSESSED HERE:
HOW YOU THINK ABOUT THE
MEANING, ROLE AND VALUE OF
MINDFULNESS AND ITS PRACTICE,
AND HOW YOU FEEL ABOUT IT.**



What this tells you:

This graph shows that your approach to the assessed topic is both cognitive and affective. We don't enough have data to report about your behaviors and whether or how your understanding and feelings are converted into actions.

YOUR SMI RESPONSES INDICATE THAT you have a clear understanding of the world we live in and the importance of mindfulness.

You realize that consumption is rewarded, linking “who we are” with “what we do, have, or own”. You see this materialistic pattern in society, with its consequences on how we have to keep busy doing things, seeking to make money to be able to belong, feel respected and valued. You realize the unfortunate impact that this implicit message has on our health and well-being. It's like being

trapped in a race to pursue an elusive and short-lived happiness.

We cannot comment on how your thinking impacts your behaviors, since you indicated (by choosing "neither") that you did not feel represented by either of the available options.

However you seem to experience the tension and stress that comes with the reality you are living. According to your choices in the questionnaire, you have discovered a way to pause and re-center, experiencing a positive impact on how you feel about yourself, and how you interact with others.

It is not clear what strategies you employ to regain your inner calm. Pausing and stepping away from our tasks clears our mind, and we can return with renewed energy. Is this something you remember to do when you need it? If not, how could you help yourself remember it more regularly, or just in time?

/THINK ABOUT HOW YOU CAN FURTHER LEVERAGE YOUR STRENGTHS AND MANAGE SOME OF THE LIMITATIONS WHICH MAY BE HOLDING YOU BACK:

Given what you notice about the “achievement race” that we live in, how does this align with your experience, and with your values? Does your reality reflect the priorities that are important for you? If not, what are some small changes you might make?

Studies show the physical and emotional consequences of a constant focus on doing, while overlooking the more profound dimensions of “being,” such as reflection, spiritual or religious practices. We all need time to recharge, and to connect with our deeper self.

It may be as simple as going for a walk, listening to your preferred music, dancing, practicing a sport, playing with children or your pet, gardening or creating art.

If these are some of the activities that help you unwind, you are on the right path already. They are called “contemplative practices” because they engage a different part of our brain, creating a ‘buffer zone’ that permits releasing tensions, and many times we end up seeing our challenges in a different light.

/THOUGHTS TO PONDER WHEN YOU CONSIDER THE SM:

From the perspective of a sustainability mindset, mindfulness is both a key practice and an amazing result. Research has shown a direct link between individuals that have some contemplative practices not just with their physical and psychological health, but also with the emergence of feelings of empathy and compassion.

This creates a disposition towards positive social and environmental actions, and the resulting satisfaction feeds a positive reinforcing loop. In other words, the better we feel about something we’ve done, the more we seek to repeat the experience.

When we access and display a more balanced version of ourselves, we convey an unspoken message to the people with whom we interact, not just by what we say or how we behave, but through our attitude and energy. This has a proven positive influence on others, as science has identified with the phenomenon of “emotional contagion.”

In other words, when we develop a sense of peace for ourselves, we are also radiating a gift of peace to the world.

You already know that.

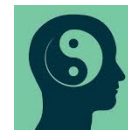
/HOW ABOUT YOU TRY:

What is mindfulness for you today: Is it a practice or does it form a part of your lifestyle?

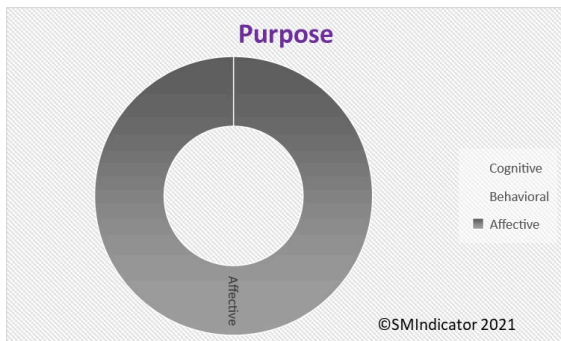
What would need to be true for you to take it to the next level, and what might that look like for you?

How easy is it for you to “catch yourself” in the moment when you are not fully present, not mindfully listening, or letting your emotional reactions control you, as opposed to your wiser self?

Mindfulness is being fully present, experiencing connectedness with all that is. Mindfulness enhances awareness and compassion, and predisposes to social and environmental actions.



**/WHAT IS ASSESSED HERE:
WHAT YOU THINK ABOUT HAVING A
PURPOSE IN LIFE, PARTICULARLY
SOMETHING THAT IS IN SERVICE TO
OTHERS; HOW THIS FITS YOUR
REALITY AND HOW YOU FEEL ABOUT
IT.**



What this tells you:

This graph shows the affective dimension, meaning that you connect emotionally with this aspect. We don't have data to report if or how these feelings relate to your understanding and behaviors.

YOUR SMI RESPONSES INDICATE THAT you feel how important it is for you to have a larger purpose and realize that it may not always be very clear, or it may change over time.

Perhaps you ask yourself if you are on the right path. While your feelings are mixed, this is actually a great start! When we sense a tension between what we are doing and what we would like to do, something has already begun to shift, and we are on the path of growth and transformation.

We cannot comment further on how you think or behave in relation to this topic, since you indicated

(by choosing "neither") that you did not feel represented by any of the available options.

**/THINK ABOUT HOW YOU CAN
FURTHER LEVERAGE YOUR
STRENGTHS AND MANAGE SOME
OF THE LIMITATIONS WHICH MAY
BE HOLDING YOU BACK:**

Research has shown that individuals who engage in activities of service to the community, volunteering or some kind of initiative for the greater good have a higher sense of wellbeing than those who do not. This includes benefits to health, feelings of joy, increased self-esteem, and personal satisfaction.

In contrast, you may have personally experienced that focusing on the extreme demands of your life sometimes can take a toll on your health, your mood, creating tension or anxiety, disrupting your sleep or impacting how you interact with others. Perhaps at times you don't feel happy with yourself or with others.

Have you asked yourself what you could do to feel better, to lower your stress? Perhaps you have, but the answer you found may have been that as long as your demands remain high, there is not much you can do.

So here, again, are some questions to evaluate:

Which of the activities that you engage in are a necessity, a "must-do," and which ones represent a choice? Who would do these activities if it were not you? What would it take to let go of some activities, or perhaps of "how" you do them?

These questions have an agenda: to help you free up some time and space to try out a different

experience, one that consists of something you do for others outside your inner circle.

/THOUGHTS TO PONDER WHEN YOU CONSIDER THE SM:

The research regarding core aspects for a sustainability mindset identified the role of activities intentionally done for the “greater good.” The state of our planet is such that it requires each of us to step up and play an active role in shaping a better world.

The actions needed, whether large or small, share a similar result: they provide us with a feeling of joy, which then we want to replicate to feel good again, thus creating a reinforcing loop. Interestingly, we tend to think that we need to take care of ourselves first, before helping others, but the facts show that when we do small acts of kindness for others, we feel much better ourselves.

/HOW ABOUT YOU TRY:

With this in mind, what are some experiments you are willing to try? What are some things for the greater good that you have already done, and perhaps could repeat, do regularly, or improve?

Don't be intimidated by lofty phrases like “changing the world” or having a life's mission or purpose. In fact, each small act of kindness comes with an impact that we may never be able to imagine. That also changes the world, one positive interaction at a time.

Defining our purpose provides an unconscious compass, and when it is grounded in values of our higher self, we actively shape a better world.



[Please click HERE](#)

and provide us with a brief (1 min) Feedback.

Thank you!

