



Sustainability
Mindset
Indicator®

PERSONAL REPORT

PREPARED FOR:
iFlexEMBA2024-14
09/Apr/2026

SUSTAINABILITY MINDSET INDICATOR

© SMIndicator 2025

SMIndicator.com

If for every dollar in minute that we invest in AI, we invest another dollar in developing our own consciousness, our own mind, we will be ok.

Yuval Noah Harari

FOOD FOR THOUGHT.

How ready do you feel you are to deal with the complexity we are living in? How do you respond to the increasing polarization, to the need to expand our attention to stakeholders impacted by our daily decisions? How comfortable are you planning and yet letting go of your plans as you consider the feedback that reality is giving you? How easy is it for you to adapt, revisit your assumptions, unleash your creativity, and innovate? **These are some of the key indicators of resilience.**

We find comfort in our plans, in the 'known and tried out' ways of doing things. Yet this may also be the obstacle that slows us down when we need to find new ways of acting that have a better impact on the world. While much is talked about the future that awaits us, it's easy to forget that it is us, each one of us, who is shaping this future with our daily decisions and actions. Yet, rushed as we all live in these demanding times, we may not take the moment to pause, observe where we are, what our most precious goals and values are, and how our day, today, is reflecting those values, leading us to those goals. And what course corrections we may want to do!

This is the Era of Purpose. How mindful are you of your larger purpose? Setting a purpose becomes the compass offering certainty in a world filled with uncertainty. Are you giving yourself the gift of a pause, to ask yourself what your larger, higher purpose could be?

You may recognize in these lines some aspects that were addressed in the statements offered to you in the Sustainability Mindset Indicator, as you were invited to reflect and choose which best represented you. This report constitutes a picture, a map of your personal journey towards a resilient, purposeful, creative mindset for flourishing as an individual that is making a difference in the world. Which is sustainability at its best.

WELCOME TO YOUR PERSONALIZED REPORT

This Report is based on your selections on the SMI. It is meant to be a personal development tool, to highlight aspects of your understanding, behaviors and feelings related to your Sustainability Mindset (SM).

You will find observations that you may identify with, others that you vaguely recognize, and others that perhaps don't resonate with you. Keep what you need and what makes sense to you.

You will also find questions to consider, suggestions for things you can try, and information related to the aspects covered in this report, and how these are related to the Sustainability Mindset.

Take your time reading your Report. Pause, take notes, and reflect. It is all about you, and for you. There were no wrong answers in the survey. Only good options and perhaps some that you hadn't thought of.

WHAT YOU WILL FIND IN THE FOLLOWING PAGES

This Personalized Report is organized into several sections. The first section contains a graph, displaying how the different aspects assessed compare to each other, according to your choices in the survey. Those that occupy a larger area are your stronger ones and the narrower or missing ones are aspects of the Sustainability Mindset that are less developed or absent for you, as inferred from the combination of your answers.

The next section presents personalized descriptions of where you find yourself on your journey towards a Sustainability Mindset, in four clusters: Ecological Worldview, Systems Perspective, Emotional Intelligence, and Spiritual Intelligence.

Within each of these clusters you will find what aspects were assessed, and a graph for each aspect displaying how you connect to this topic, whether intellectually, through your actions and behaviors and/or by engaging your emotions.

If you see some areas missing within the graph, it means that either you selected "neither" for that question and therefore we don't have information to report on, or your answers suggest you don't engage in one or more particular areas (cognitive, behavioral or affective). Similarly, if you selected "neither" for all the questions within one aspect, we don't include a graph, since we don't have information to report on.

Each graph is accompanied by a box with a brief explanation, and you will find much more information in the text to include what your choices suggest, why this particular aspect is key for a sustainability mindset, and questions to ponder and suggestions to try.

Enjoy your journey into the realm of the Sustainability Mindset - a place where you can be your best, for yourself and for the World.

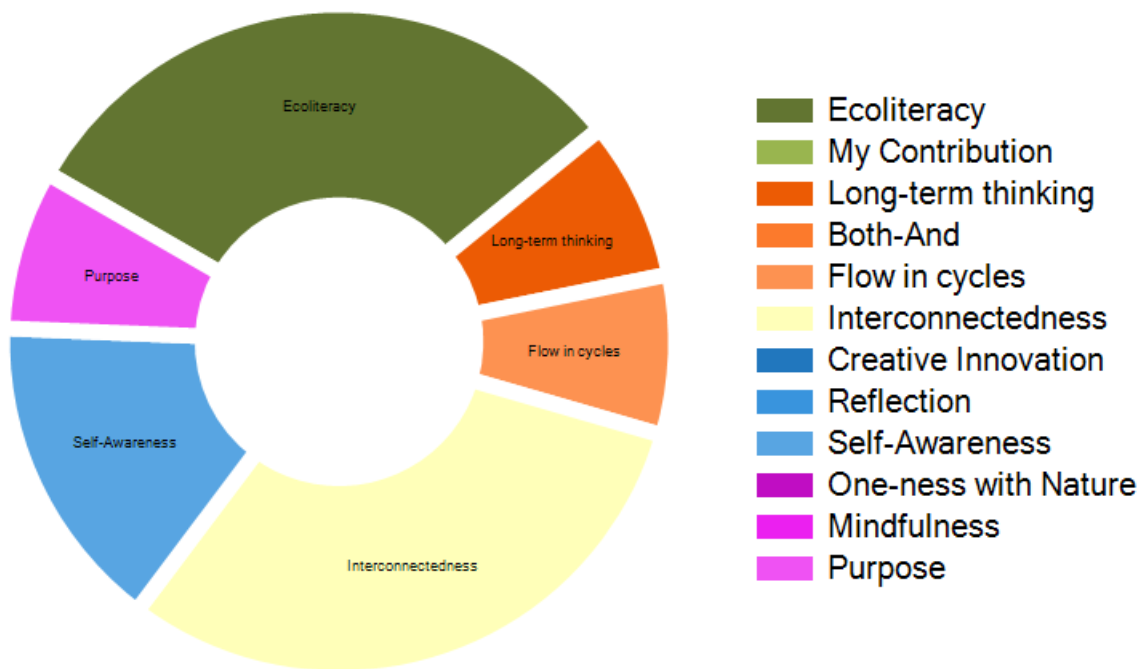
SUSTAINABILITY MINDSET INDICATOR

/ YOUR OVERALL **SUSTAINABILITY MINDSET PROFILE**

SUSTAINABILITY MINDSET INDICATOR

**THIS PAGE IS HERE FOR YOU TO
NOTE YOUR REFLECTIONS,
INSIGHTS, AND QUESTIONS.**

The graph below shows your personal profile, indicating how – relatively to each other – you have developed your Sustainability Mindset. The wider sections indicate your stronger areas, and vice versa.





/ECOLOGICAL WORLDVIEW

An ECOLOGICAL WORLDVIEW is the result of having an intellectual and affective broad understanding of the planetary challenges, how they are interrelated, and how we are contributing to them.

**/WHAT IS ASSESSED HERE:
HOW YOU UNDERSTAND THE
ENVIRONMENTAL AND SOCIAL
CHALLENGES, AND HOW YOU FEEL
ABOUT IT, AND THE IMPACT ON
YOUR BEHAVIORS.**



What this tells you:

When the graph is well balanced, it means that you have a good understanding of the aspect of the Sustainability Mindset being assessed, that you are able to connect with your feelings about it, and that you tend to act upon what you know and feel. This is a good start, and you might want to think about circumstances or contexts in which you would like to act more, understand better or further explore your feelings.

YOUR SMI RESPONSES INDICATE THAT you have a good understanding of the complexity of the planetary challenges we are facing, and how they are interrelated. In addition, you seem to be socially sensitive and have empathy for the suffering of others.

This may be an important motivation for you to act in your daily decisions in ways that can minimize your ecological or social footprint, and/or help the sustainability of our planet.

**/THINK ABOUT HOW YOU CAN FURTHER
LEVERAGE THOSE STRENGTHS AND MANAGE
SOME OF THE LIMITATIONS WHICH MAY BE
HOLDING YOU BACK:**

This is a great foundation so, where do you think your next challenge is? Maybe to understand more about what is happening, and connect more through your heart and your feelings? Perhaps you can imagine ways in which you can use your skills and unique gifts to contribute and make personal changes for the greater good.

**/THOUGHTS TO PONDER WHEN YOU
CONSIDER THE SM:**

We tend to underestimate our own power and influence in shaping a better world. As a matter of fact, if the challenges we are currently experiencing are a product of past problematic behaviors, then we are also positively shaping the future of the planet with our current mindful decisions and restorative actions. That opens an interesting path.

Here are some suggestions to consider: What are things you are good at that you aren't incorporating into your sustainability contributions? Who could benefit and where from your gifts and talents and possibly your passion?



Understanding the state of the planet allows us to be more fully aware of the challenges, the complexity of how they are linked to each other, and to explore what it means to us.



This page is here for you to note your reflections, insights, and questions.

**/WHAT IS ASSESSED HERE:
HOW YOU SEE THE RELATION
BETWEEN INDIVIDUAL DECISIONS
AND PLANETARY CHALLENGES, HOW
YOU FEEL ABOUT IT AND THE
IMPACT ON YOUR PERSONAL
BEHAVIORS.**

YOUR SMI RESPONSES INDICATE THAT you maintain an emotional distance with the planet's social or environmental problems, by expecting others to fix. After all, you didn't cause them.

This can be a useful coping strategy. Perhaps you sense that you would be overwhelmed by emotions while feeling powerless to solve those problems.

/YOU ARE MOST COMFORTABLE WHEN you can keep a pragmatic approach to the world.

We cannot comment on your thinking about this topic, since you indicated (by choosing "neither") that you did not feel represented by either of the available options.

**/THINK ABOUT HOW YOU CAN FURTHER
LEVERAGE THOSE STRENGTHS AND
MANAGE SOME OF THE LIMITATIONS
WHICH MAY BE HOLDING YOU BACK:**

When problems seem exceedingly large, you hope that someone will eventually intervene. Yet, this perspective also can cause stress, as it assumes we are victims at the mercy of powerful external forces or individuals.

There may be another way to look at this: What if you could identify small ways in which you realize that you are contributing to the problem, and then, begin to explore changes that are within your control? Certainly, you will not solve the bigger problems, but to begin with you may feel

more empowered, less at the mercy of others, and playing a role that you may actually enjoy. Food for thought.

**/THOUGHTS TO PONDER WHEN YOU
CONSIDER THE SM:**

Thinking of how we are personally contributing to the planetary challenges may not be something we do daily. Our demanding lives have many obligations and don't leave much time for reflecting on this. We are busy getting things done!

Yet when analyzing the current un-sustainability of our planet, science has clearly established a link between human behaviors in past decisions and the current problems we face. Much attention is now focused on how to repair the damage done, and how to restore damaged, depleted, or endangered resources. Scientists and entrepreneurs study how to minimize current or future problems at the environmental or social level, and how to innovate to avoid negative impacts into the future.

If we collectively influenced the place, we find ourselves in now (with all its problems), that means we also hold the key to influence where we will collectively be in the future – we: meaning humankind at large, or, from a closer perspective, our families, children, and grandchildren.

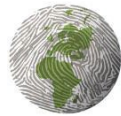
/HOW ABOUT YOU TRY:

What if you could develop the habit of asking yourself periodically: *how am I contributing to this problem?* This question opens a path of inquiry, which automatically leads to expansion of your consciousness. You become more alert to take notice, and thus more open to try out new behaviors.

This same question, by the way, is also a powerful tool that can improve your relationships and interactions with others! So often we focus on what others are doing unto us, which leaves us powerless. When we learn to pay attention to

what is our role in the problems we endure, we regain control and can actually do something.

Actively thinking about how we might be contributing to environmental or social problems makes us better planetary citizens. At the same time, this enhanced awareness is an important milestone in our broader personal development.



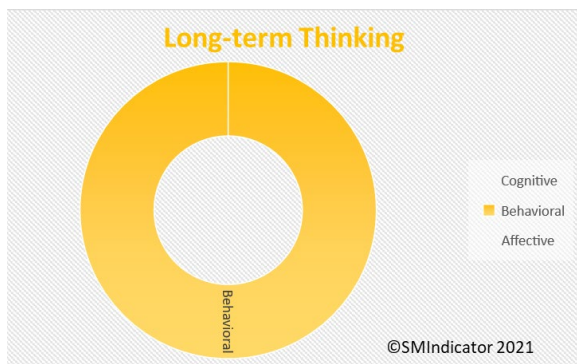
When we identify the ways in which we are unintentionally contributing to the problems, we have a chance to do something about them. It also expands our consciousness and develops social sensitivity.



/SYSTEMS PERSPECTIVE

When analyzing information and making decisions a SYSTEMS PERSPECTIVE has a major impact on the sustainability of our actions.

**/WHAT IS ASSESSED HERE:
HOW YOU THINK ABOUT THE LONG-TERM IMPACT WHEN ANALYZING AND MAKING DECISIONS, COMPLEMENTING SHORT-TERM THINKING; HOW YOU FEEL ABOUT IT, AND THE IMPACT ON YOUR BEHAVIORS.**



What this tells you:

This graph shows only one dimension – behavioral - indicating that you are action- oriented. We don't have enough data to report on your feelings about or understanding of this topic.

YOUR SMI RESPONSES INDICATE THAT you have a natural tendency to think of “what ifs” and the long-term consequences of possible decisions before taking them.

This may not always be welcome in a team setting, yet from the perspective of shaping a sustainable world, this contribution is a great asset to yourself and to your working groups. Your perspective will likely enrich actions, as they result from considering potential impacts in the longer term. Don't be shy!

We cannot comment how you think and feel about this topic, since you indicated (by choosing "neither")

that you did not feel represented by any of the available options.

/THOUGHTS TO PONDER WHEN YOU CONSIDER THE SM:

There is a tacit pressure to act promptly and focus on that which needs immediate attention. This is very important, and there are many circumstances where this way of responding is the optimal, or even the only one that matters. A fire in the house, for example. We can sense the urgency and it is not a good idea to pause and reflect on the long-term implications of the fire. But for many daily decisions, the context is different, and yet we still prioritize short term thinking, often without even pondering any medium- or long-term impacts of what we are doing. The stream of life, our colleagues, perhaps everyone with whom we interact takes for granted that we “all” act this way.

On the other hand, with greater understanding of the social and environmental problems we are facing, it has become clear that the law of cause-and-effect is always at play, even if not immediately obvious. In other words, the consequences of our daily actions do have impacts - some over time, some just in a different geography, and many on both.

As with other aspects which are key for a sustainability mindset, it is not a question of choosing one over the other, but a matter of balancing both views and taking both time horizons into account.

/HOW ABOUT YOU TRY:

This mental habit expands our consciousness, as we become more aware of the way we are impacting others and the world. Not thinking about this doesn't stop it from happening. Stretching our imagination to consider potential impacts across time helps us make better decisions, and play a more active role in shaping a better world.

For example, what might be some long-term consequences for sustainability of a purchasing decision you recently made? What would your latest decision look like if you had considered these potential long-term impacts? It takes practice to develop new mental habits, but they too, can have long term impacts - for the better.



Every action has consequences that are not immediately visible. Considering the long-term when analyzing situations and making decisions has a positive impact on global sustainability.

**/WHAT IS ASSESSED HERE:
HOW YOU THINK ABOUT AND DEAL
WITH AMBIGUITY AND PARADOXES,
HOW YOU RECOGNIZE DIVERSITY,
FEEL ABOUT IT AND ACT TOWARDS
IT.**

We cannot comment on your thinking, behaviors, or feelings about this topic since you indicated (by choosing "neither") that you did not find yourself represented by any of the available options.

**/THOUGHTS TO PONDER WHEN YOU
CONSIDER THE SM:**

Much of our world's sustainability challenges originate in choices such as: "either the planet or the economy" and "either protect the wolves or the farmer." It seems that today, more than ever, we are collectively being confronted with paradoxes and ambiguity. Increased transparency and access to information from around the world makes us aware of very different ways of thinking, being and acting with which we may not agree or be comfortable.

Challenging as this may be, there is a benefit to it: We are becoming aware of our own worldviews just by realizing that there are other ways of seeing and feeling. This is an evolutionary insight of great value, the foundation for more peaceful societies.

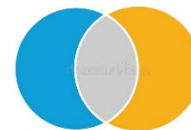
Either-Or choices can be misleading and have us believe there are win-lose solutions that work. But do they really?

If the cost is high, do they still work? What may we be missing that these others are seeing when we find ourselves in a situation where we see it the right way, and others are wrong? How could we all benefit from having a fuller picture?

Can you think of an event or situation, however minor, where someone with a different opinion was able to step into your shoes? How did it make you feel? How did it impact your attitude and your behavior?

What if we could shape a world that makes room for different perspectives? Where you acknowledge others' points of view, and yours are also included by others? Since we cannot control what others think or do but do have control over our own way of thinking, there may be an interesting path worth exploring here.

In a way, life is prompting us to expand our understanding and our scope of caring, which go hand in hand. When we understand something, we can begin caring. This is the start of a better world for all.

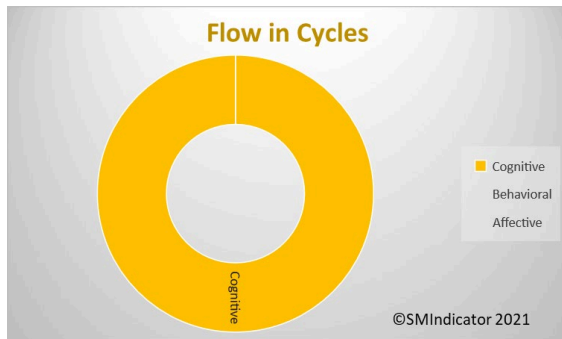


Both+and thinking allows us to understand paradoxes and calls for creative solutions that are inclusive of all stakeholders.



This page is here for you to note your reflections, insights, and questions.

**/WHAT IS ASSESSED HERE:
HOW YOU BALANCE YOUR CAPACITY
TO ANALYZE AND PLAN WITH THE
UNDERSTANDING OF NATURAL
CYCLES, AND MAKE THEM PART OF
YOUR MINDSET.**



What this tells you:

This graph shows only one dimension – cognitive - indicating that you have knowledge about this aspect, without necessarily connecting it with your behaviors. You might use this information to seek ways to convert your understanding into action.

We don't have enough data to report about your feelings on this topic.

YOUR SMI RESPONSES INDICATE THAT you are profoundly committed to actions, enjoying the challenges life offers you.

/YOU ARE COMFORTABLE crafting plans and setting goals to measure your progress. At the same time, you are aware of the commonly shared belief that humans are the most intelligent species, the apex of creation, with the intellectual ability to control nature. And you have come to realize this assumption is most frequently contradicted by reality, particularly when we think in a linear way, acting outside the cycles of Nature.

We cannot comment on how you feel about this topic, since you indicated (by choosing "neither") that you did not find yourself represented by any of the available options.

**/THINK ABOUT HOW YOU CAN
FURTHER LEVERAGE YOUR
STRENGTHS AND MANAGE SOME
OF THE LIMITATIONS WHICH MAY
BE HOLDING YOU BACK:**

While planning is a way to feel in control of situations, you also have noticed that it is constantly challenged since life - with its countless variables - is too complex to be managed.

Do you experience frustration at times when things don't work out as you planned, or expected? How do you react? Do you let go of your plans and observe what the events are telling you, or do you use persistence and incremental efforts to stay on top of your planned course?

**/THOUGHTS TO PONDER WHEN YOU
CONSIDER THE SM:**

You may be wondering why planning is related to several key aspects for a sustainability mindset. The connection is not in the planning as an activity per se, but in the way we think and process information when we plan. Planning is about organizing and structuring in order to control outcomes. Planning is linear by definition -one step after the other - and it assumes cause-effect relationships. But what about multi-effects, multi-causes, and feedback loops?

Contrast this with the sustainability problems we are facing. To begin with, they are complex and multidimensional by their very nature. Many are the result of our linear thinking, for example we believe that we can pursue unlimited growth, yet

depletion of natural resources shows us this is not possible.

Our reliance on the human mind can create a collective assumption that we are in control, but a “small” manifestation like Covid-19 arrives as a surprise to debunk the myth of our own superiority.

/HOW ABOUT YOU TRY:

Planning in itself is not the problem but rather, excessive reliance on carefully crafted steps. How do you incorporate the cycles of nature into your planning?

As an example, do you accept phases of growth and decline - aging and impermanence, along with endings and mortality followed by new beginnings and birth? How do you incorporate humanity as part of Nature, rather than its controller?

Many implications to think about, indeed.

Here a few thoughts to ponder. Do you see yourself balanced in terms of making and letting go of plans? How do you balance structure and flow, organization and flexibility?

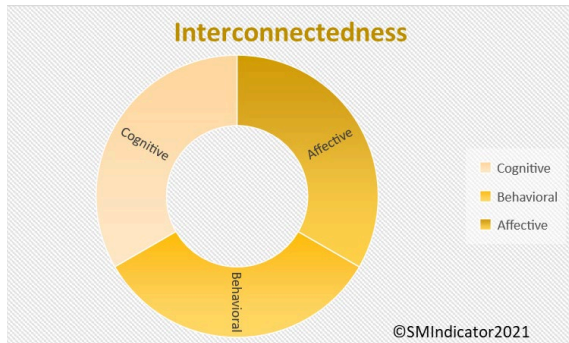
Relaxing your grip on plans may cause uncertainty, yet like swimming along with the river’s current, it can also increase your speed, and reduce the stress of resisting obstacles. Worth a try.

There are no linear processes in Nature: Everything flows in cycles of birth, growth, death, and rebirth.

Many aspects of man-made unsustainability of the planet are a result of the misconception that we are not governed by this law of Nature.



/WHAT IS ASSESSED HERE: HOW YOU UNDERSTAND AND EXPERIENCE INTERCONNECTEDNESS, VERSUS VALUES LIKE AUTONOMY AND INDEPENDENCE.



What this tells you:

When the graph is well balanced, it means that you have a good understanding of the aspect of the Sustainability Mindset being assessed, that you are able to connect with your feelings about it, and that you tend to act upon what you know and feel. This is a good start, and you might want to think about circumstances or contexts in which you would like to act more, understand better or further explore your feelings.

YOUR SMI RESPONSES INDICATE THAT you have a clear understanding that we are all interconnected, even in non-obvious ways, and that no one is really fully independent.

You are comfortable seeing yourself as part of a larger whole, and you pay attention to the input of stakeholders when analyzing a problem and seeking effective solutions. In addition, you are appreciative about other people's input and support. You thrive in collaborative environments,

welcome participatory solutions and feel grateful for the help of others.

This is a precious combination in the current times! While certain cultures have a collectivistic framework, most of the western-northern culture - widely exported and globalized - is individualistic and celebrates personal achievement. But you know this is neither realistic nor feasible.

/THINK ABOUT HOW YOU CAN FURTHER LEVERAGE YOUR STRENGTHS AND MANAGE SOME OF THE LIMITATIONS WHICH MAY BE HOLDING YOU BACK:

Do you experience an unspoken expectation in your daily life - to be independent, to outperform others, to be self-reliant or perhaps to demonstrate your value in competitive settings? Have you sensed the contradiction between these two paradigms, one valuing competition and self-reliance, the other promoting collaboration and inclusion? How do you manage the tension, and are you able to share your perspective with others, perhaps helping to expand their thinking horizons?

/THOUGHTS TO PONDER WHEN YOU CONSIDER THE SM:

The polarities of independence vs. interconnectedness and competition vs. collaboration are of particular relevance when focusing on sustainability. The environmental and social challenges are complex and multidimensional, making it impossible for any person to solve on their own. It is only through collective thinking, action and collaboration of multiple stakeholders that we will be able to develop alternatives. (This, by the way, makes sustainability a great opportunity for contributing personal skills to a larger cause).

/HOW ABOUT YOU TRY:

With your valuable perspective, how do you handle situations when others don't see the urgency of collaboration but rather respond from the old paradigm of autonomy and competition?

Here is a tip that may come handy. Invite them to name one achievement that was purely, authentically, their own, without any other person playing a role in it.

When we see interconnectedness, we understand the importance of diversity, and our decisions and actions become more inclusive, which contributes to the sustainability of the whole.





/EMOTIONAL INTELLIGENCE

Understanding ourselves through the anchors of our identity, the pace of our life, and how we consider our intuitive wisdom are key for a sustainability mindset.

/WHAT IS ASSESSED HERE: HOW YOU INCORPORATE NON- RATIONAL INFORMATION, INTUITIVE KNOWING, CREATIVITY AND IMAGINATION IN ORDER TO BALANCE RATIONAL THINKING, AND HOW YOU FEEL ABOUT IT.

YOUR SMI RESPONSES INDICATE THAT you have a clear understanding of the value of your logical and analytical thinking abilities.

You know that the human mind is capable of great accomplishments, as history has shown. And you trust that our sustainability problems might be addressed with rational thinking and good strategies.

You feel most comfortable when you can think things through, following proven steps and organizing reality into priorities. You enjoy order and dislike the uncertainty of chaotic situations. These preferences make you a great contributor of rational thinking when analyzing a problem. You may find yourself in the role of the defender of structure and stability, and the keeper of the status quo. You are careful to avoid what you consider as unnecessary risks.

We cannot further comment on your behaviors, since you indicated (by choosing "neither") that you did not find yourself represented by either of the available options.

/THOUGHTS TO PONDER WHEN YOU CONSIDER THE SM:

You may have noticed that the sustainability challenges we are facing are largely new, and as COVID-19 taught us, increasingly situations arise for which we don't have previous experience or science

on which to rely. We have become more aware of the complexity of our challenges, and we are skeptical of the effectiveness of simplistic solutions.

However, this also requires entry into uncharted territories. Resilience calls for flexibility in adapting to new situations, and this entails innovating and experimenting. Having no plans or blueprints to follow may be unsettling, and the only choice is to take some risks.

/THINK ABOUT HOW YOU CAN LEVERAGE YOUR STRENGTHS AND MANAGE SOME OF THE LIMITATIONS WHICH MAY BE HOLDING YOU BACK:

You may want to ponder: how comfortable do you feel when experimenting without knowing the results? What are some situations in which you are creative, relaxed and playful? Perhaps cooking or gardening? Playing some team sports? Or around small children? Maybe planning a party?

If you can identify some of these creative and playful moments, in them you have a reservoir of imagination available to tap into. This can help you complement your strategic thinking and maximize your achievements for the benefit of all.

*Resilience is based on constant
creativity, innovation, and
experimentation. When we neglect
the non-rational wisdom we have in
us, our solutions are missing critical
information, and may create negative
impacts on the ecosystem and
society.*





This page is here for you to note your reflections, insights, and questions.

**/WHAT IS ASSESSED HERE:
HOW YOU NOTICE YOUR OWN PACE,
AND HOW YOU BALANCE RAPID
RESPONSE WITH MAKING TIME TO
PONDER AND REFLECT BEFORE
ACTING. AND HOW THIS MAKES
YOU FEEL.**

/YOUR SMI CHOICES INDICATE THAT you see the importance of swift actions in a world that you believe is unforgiving of slow-movers. You know that the present day pace is fast or highly accelerated, depending upon who you ask. You are a true citizen of our times!

YOU ARE COMFORTABLE. This fits you well, as you have no concerns about making a quick assessment of a situation and acting promptly. You are a quick thinker, and while you may overlook some details, you consider that your decisiveness also helps stimulate those that are more hesitant. Speed is justified.

As a matter of fact, you thrive on the adrenaline of urgency. You find multitasking very stimulating and are gifted with endurance. You enjoy the tension which brings out your best performance.

**/THINK ABOUT HOW YOU CAN
FURTHER LEVERAGE YOUR
STRENGTHS AND MANAGE SOME
OF THE LIMITATIONS WHICH MAY
BE HOLDING YOU BACK:**

Does it ever happen that you wish you could relax, slow down and do nothing? Does your body, your mind or perhaps your soul call for less stress, or

even a break? What message might be there for you, waiting to be heard?

**/THOUGHTS TO PONDER WHEN YOU
CONSIDER THE SM:**

Since we are looking at these aspects from the perspective of a sustainability mindset, let's pause and think about what behaviors might be most effective as well as much needed.

While there is a call for urgent action about climate change and the related social and environmental problems, many modern sustainability challenges are actually the result of overlooked potential impacts.

For decades, well-intended decisions were largely made by quickly identifying the best option. But today we are understanding better that problems are complex, that solutions impact a multiplicity of future stakeholders, and that there are always consequences.

Of course, it is not possible to anticipate all scenarios, but pausing and checking assumptions as you do it can be very useful to avoid future problems.

/HOW ABOUT YOU TRY:

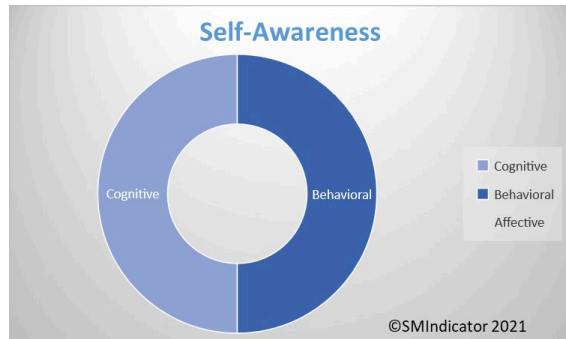
For example, what can you learn to avoid or repeat from past experiences? Can you identify in hindsight, what was at stake? When we have more information we can better weigh alternatives. All of this, however, is at odds with speed. We cannot both act fast and ponder carefully.

The question becomes: Is decisiveness and fast action coming at an expensive price for you and others, us, the next generations, and the ecosystem? Food for thought!

*Reflective practices help to pause,
and to ponder the situation and its
implications before jumping into
action.*



**/WHAT IS ASSESSED HERE:
HOW AWARE YOU ARE ABOUT THE
ANCHORS OF YOUR IDENTITY AND
YOUR VALUES; HOW YOU FEEL AND
ACT IN CONSEQUENCE.**



What this tells you:

This graph shows the two dimensions of cognitive and behavioral, meaning that you have an intellectual understanding of this aspect, and you also act upon it. We don't have enough data to report if or how you connect with your feelings related to this item.

YOUR SMI RESPONSES INDICATE THAT you believe the paradigm we have long been living with is due for a revision, because values like growth and progress may be linked to an assumption of unlimited resources, which may not be realistic.

You have been noticing that many of your automatic behaviors are actually not very environmentally friendly, or perhaps have some kind of negative social impact.

You are comfortable trying to make some changes, but this probably has been somewhat challenging and might not have left you very satisfied. We cannot comment on your feelings related to this topic since you indicated (by choosing "neither") that you did not find yourself represented by either of the available options.

**/THINK ABOUT HOW YOU CAN
LEVERAGE YOUR STRENGTHS AND
MANAGE SOME OF THE
LIMITATIONS WHICH MAY BE
HOLDING YOU BACK:**

Your understanding and actions are not mainstream, and thus very important to drive much needed change. Undoubtedly, there are social and environment related challenges everywhere. Some happen locally, others across borders. You understand science has been linking many of these issues to human behaviors, such as consumption of unhealthy foods, depletion of natural resources, pollution or contamination of air, soil and water. And we are left to deal with the consequences today, trapped in a paradigm that prioritizes values that have a negative impact, such as thoughtless consumption.

How happy are you with how you are sharing your valuable perspectives with others? Do you feel you are doing it as much as you could?

**/THOUGHTS TO PONDER WHEN YOU
CONSIDER THE SM:**

Let's pause for a moment. This survey was designed around the Sustainability Mindset, which is a way of thinking and being, to optimally adapt to the moment in which we are living. This mindset focuses on using our natural gifts to shape a better

future, for ourselves and for all, the ecosystem included.

Research has proven that what may sound overwhelming, actually can be broken down into small, realistic ways to contribute to the greater good, and feel great at the same time. The first step is taking a fresh look at what surrounds us.

/HOW ABOUT YOU TRY:

Have you identified some of your activities that may not live up to your personal expectations of living in a 'sustainable' way? In what new ways could you make some changes? Sometimes we do not have the power to control a situation, but we always have unlimited power to influence, with our words, attitudes, talking or writing.

How about exploring a few of your unused possibilities?

Another suggestion is that you explore the roots of some values that are important for you, such as success, winning, and outperforming others. Where can you trace their origins? Perhaps in your upbringing, or in your current context? What do they represent for you, which makes them important? Are they authentically yours, or are they perhaps inherited, adopted without giving much thought to it?

When we explore our personal values, beliefs, assumptions, and motivations, we gain greater control over our actions, and we can see new alternative behaviors.





/SPIRITUAL INTELLIGENCE

The spiritual orientation to Nature, to ourselves and to others are key factors for a Sustainability Mindset, as they impact the quality of our actions.

/WHAT IS ASSESSED HERE: HOW YOU EXPERIENCE NATURE, HOW YOU UNDERSTAND THE HUMAN RELATIONSHIP WITH NATURE, AND YOUR RELATED FEELINGS AND BEHAVIORS.

YOUR SMI RESPONSES INDICATE THAT you see yourself as a rational individual.

You are comfortable opting for an intellectual approach to Nature and you value efforts to build scientific and objective knowledge about it. This is certainly how our understanding of the natural world, including our bodies, has advanced over time.

/THINK ABOUT HOW YOU CAN LEVERAGE YOUR STRENGTHS AND MANAGE SOME OF THE LIMITATIONS WHICH MAY BE HOLDING YOU BACK:

That said, the evolution of science has also shown that findings are made within the constraints of available instruments, paradigms, or assumptions and many myopic or biased conclusions have been revealed with the passage of time, the development of more precise measurement techniques and revolutionary thinking.

Biomimicry, a discipline studying how Nature solves problems, has been highlighting the wisdom of billions of years of evolution, and suggesting that we may find more answers in Nature than through our human intellect.

In fact, indigenous people have demonstrated a more resilient lifestyle, based on an intuitive connection to Nature.

We cannot comment on how your thinking impacts your behaviors or feelings, since you indicated (by choosing "neither") that you did not find yourself represented by any of the available options.

But have you ever reflected upon some moments when you connected with Nature, perhaps in a non-verbal but memorable experience?

/THOUGHTS TO PONDER WHEN YOU CONSIDER THE SM:

According to a 2018 United Nations study, over 55% of the world's population lives in urban areas, a proportion that is expected to increase to 68% by 2050. As a result, for many of us, the disconnection from Nature is rather "natural." Hectic life in large cities makes it difficult for us to remember that we are more than individuals moving through traffic and buildings. The common associations with the word "Nature" may be vacation time, a park, or a documentary. What about our food? Our body? The materials of every object we use?

This disconnection from Nature leads to a utilitarian relationship: Nature is reduced to instrumental resources for human needs and wants, causing not only spiritual alienation, but is the root cause for many unsustainability behaviors.

What consequences do you see from having a utilitarian relationship with Nature?

When we understand something, we start caring for it. Understanding that we are one with Nature, a species within species, is a profound experience that can shape behaviors leading to a more harmonic relationship with the self, with each other and with all beings.

Experiencing a deep connection with Nature is a sensorial, intuitive understanding. It is not something to be learned, but rather an experience that we allow to occur, and which makes us remember the sense of oneness we have always known but had forgotten.

/HOW ABOUT YOU TRY:

It is impossible to guess your particular context, and your current priorities. But we invite you to give yourself an unusual gift: Spend an hour in Nature, on your own, without looking at your phone, and with no books, pets, or other people. If you have never experienced this, you are up for a very special treat!

Understanding that we are one with Nature, a species within species, is a powerful spiritual experience that can shape behaviors leading to a more harmonious relationship with each other and all beings.



**/WHAT IS ASSESSED HERE:
HOW YOU THINK ABOUT THE
MEANING, ROLE AND VALUE OF
MINDFULNESS AND ITS PRACTICE,
AND HOW YOU FEEL ABOUT IT.**

YOUR SMI RESPONSES INDICATE THAT you are very good at focusing on what you need to get done, according to your own goals and expectations, and/or the demands that you receive from your social surroundings.

This is already a lot to keep you busy, and often you don't even have enough time to accomplish all of it. There are great expectations placed upon you!

/ALIGNED WITH THIS when your reality is challenging, it poses a high demand on your physical, emotional and psychological well-being, which you try to manage in the best way you can. You seem, at times, to experience the tension and stress that comes with your demanding reality. You may notice it in your health, sleeping patterns, moods, or in how you relate to others as a result.

We cannot comment on how you think about this, since you indicated (by choosing "neither") that you did not feel represented by either of the available options.

**/THINK ABOUT HOW YOU CAN
LEVERAGE YOUR STRENGTHS AND
MANAGE SOME OF THE LIMITATIONS
WHICH MAY BE HOLDING YOU BACK:**

Sometimes we hear people say "you should do less, you should relax, you should take time for yourself, etc.," and from your perspective, their suggestions may sound somewhere between unreal and ridiculous, since you are the one living with the challenges. They don't always realize that we are all doing our best all of the time.

At the same time, being very concentrated on your obligations rarely leaves time or space to look around, and oftentimes information is available "out there" that could facilitate your task, but you just don't see it.

/HOW ABOUT YOU TRY:

For example, perseverance is an important virtue, except when it makes us miss easier or better ways to achieve our goal. Pausing and stepping away from our task clears our mind, and we can return to it with renewed energy and sharper vision.

So here are some questions for you to contemplate.

Has it ever occurred to you that the fact that everyone lives like this" may not necessarily make it ideal? Studies show the physical and emotional consequences of a constant focus on doing while overlooking the more profound dimensions of "being," such as reflection, spiritual or religious practices, time to recharge and find ourselves, and time to connect with our deeper self.

Furthermore, individuals that dedicate time to nurture this ignored or neglected part of themselves soon realize the positive impact that small practices of slowing down have on their peace of mind, how they relate to others and even on their health. It may be as simple as going for a walk, listening to your preferred music, dancing, practicing a sport, playing with children or your pet, gardening or creating art.

There are certain words that, just by thinking of them create an expansion in our heart, bringing positive feelings. From a biological perspective, they cause our system to release dopamine, the so-called happiness hormone.

Can you think of some of these words? How do they make you feel? For starters, a small but powerful gift that you well deserve!

/THOUGHTS TO PONDER WHEN YOU CONSIDER THE SM:

From the perspective of a sustainability mindset, mindfulness is both a key practice and an amazing result. Research has shown a direct link between individuals that have some contemplative practices not just with their physical and psychological health, but also with the emergence of feelings of empathy and compassion.

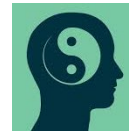
This creates a disposition towards positive social and environmental actions, and the resulting satisfaction feeds a positive reinforcing loop. In other words, the better we feel about something we've done, the more we seek to repeat the experience.

When we access and display a more balanced version of ourselves, we convey an unspoken message to the people with whom we interact, not just by what we say or how we behave, but through our attitude and energy. This has a proven positive influence on others, as science has identified with the phenomenon of "emotional contagion."

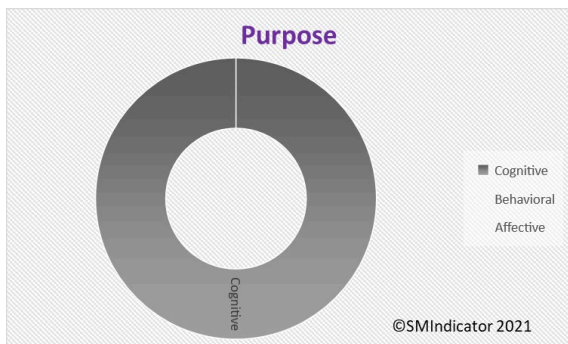
In other words, when we develop a sense of peace for ourselves, we are also radiating a gift of peace to the world.

Do you want to give it a try?

Mindfulness is being fully present, experiencing connectedness with all that is. Mindfulness enhances awareness and compassion, and predisposes to social and environmental actions.



**/WHAT IS ASSESSED HERE:
WHAT YOU THINK ABOUT HAVING A
PURPOSE IN LIFE, PARTICULARLY
SOMETHING THAT IS IN SERVICE TO
OTHERS; HOW THIS FITS YOUR
REALITY AND HOW YOU FEEL ABOUT
IT.**



What this tells you:

This graph shows only one dimension – cognitive - indicating that you have knowledge about this aspect, without necessarily connecting it with your behaviors. You might use this information to seek ways to convert your understanding into action.

We don't have enough data to report about your feelings on this topic.

YOUR SMI RESPONSES INDICATE THAT you think it is important to find a purpose in life, to identify something that, by making a difference, makes our life meaningful.

At the same time, you know how to set priorities, because what is urgent needs attention before what sounds important, like thinking about what is our purpose in life. This is an important skill in times when there seem to be more obligations and

things we are expected to take care of, than hours in a day.

Work, family, relationships, career or health issues can use up all your available energy, often even leaving you with the feeling that nothing you do is enough. When topics arise like contributing to society, you believe this may be something to do once your other obligations diminish and you free up some time, hopefully in retirement.

We cannot comment on how this makes you feel, since you indicated (by choosing "neither") that you did not feel represented by either of the available options.

**/THINK ABOUT HOW YOU CAN
LEVERAGE YOUR STRENGTHS AND
MANAGE SOME OF THE
LIMITATIONS WHICH MAY BE
HOLDING YOU BACK:**

All that said, research has shown that individuals who engage in activities of service to the community, volunteering or some kind of initiative for the greater good have a higher sense of wellbeing than those who do not. This includes benefits to health, feelings of joy, increased self-esteem, and personal satisfaction.

In contrast, you may have personally experienced that focusing on the extreme demands of your life sometimes takes a toll on your health, your mood, creating tension or anxiety, disrupts your sleep or impacts how you interact with others. Oftentimes, you don't feel happy with yourself or with others. Have you asked yourself what you could do to feel better, to lower your stress? Perhaps you have, but the answer you found may have been as long as your demands remain high, there is not much you can do.

So here, again, some thoughts to evaluate:

Which of the activities that you engage in are a necessity, a “must-do,” and which ones represent a choice? Who would do these activities if it were not you? What would it take to let go of some activities, or perhaps of “how” you do them?

These questions have an agenda: to help you free up some time and space to try out a different experience, one that consists of something you do for others outside your inner circle.

/THOUGHTS TO PONDER WHEN YOU CONSIDER THE SM:

The research regarding core aspects for a sustainability mindset identified the role of activities intentionally done for the “greater good.” The state of our planet is such that it requires each of us to step up and play an active role in shaping a better world.

The actions needed, whether large or small, share a similar result: they provide us with a feeling of joy, which then we want to replicate in order to feel good again, thus creating a reinforcing loop.

Interestingly, we tend to think that we need to take care of ourselves first, before helping others, but the facts show that when we do small acts of kindness for others, we feel much better ourselves.

/HOW ABOUT YOU TRY:

With this in mind, what are some new experiments you can try? What are some different things for the greater good that you already did, and perhaps could repeat, do regularly, or improve? Which of your natural gifts and skills could you put into

service for the greater good, in a cause for which you have a passion?

Don’t get intimidated by grandiose words like ‘changing the world’ or having a life mission or purpose. In fact, each small action of kindness has already an impact that we may never be able to imagine. That is also changing the world, one interaction at a time.

Defining our purpose provides an unconscious compass, and when it is grounded in values of our higher self, we actively shape a better world.



[Please click HERE](#)

and provide us with a brief (1 min) Feedback.

Thank you!

