



Sustainability
Mindset
Indicator®

**/REPORT
PREPARED FOR:
John Durkan
29/Sep/2024**

*If for every dollar in minute that we invest in AI, we invest another dollar in developing our own consciousness, our own mind, we will be ok. **Yuval Noah Harari***

FOOD FOR THOUGHT.

How ready do you feel you are to deal with the complexity we are living in? How do you respond to the increasing polarization, to the need to expand our attention to stakeholders impacted by our daily decisions? How comfortable are you planning and yet letting go of your plans as you consider the feedback that reality is giving you? How easy is it for you to adapt, revisit your assumptions, unleash your creativity, and innovate?

These are some of the key indicators of resilience.

We find comfort in our plans, in the 'known and tried out' ways of doing things. Yet this may also be the obstacle that slows us down when we need to find new ways of acting that have a better impact on the world. While much is talked about the future that awaits us, it's easy to forget that it is *us*, each one of us, who is shaping this future with our daily decisions and actions. Yet, rushed as we all live in these demanding times, we may not take the moment to pause, observe where we are, what our most precious goals and values are, and how our day, today, is reflecting those values, leading us to those goals. And what course corrections we may want to do!

This is the Era of Purpose. How mindful are you of your larger purpose? Setting a purpose becomes the compass offering certainty in a world filled with uncertainty. Are you giving yourself the gift of a pause, to ask yourself what your larger, higher purpose could be?

You may recognize in these lines some aspects that were addressed in the statements offered to you in the Sustainability Mindset Indicator, as you were invited to reflect and choose which best represented you. This report constitutes a picture, a map of your personal journey towards a resilient, purposeful, creative mindset for flourishing as an individual, making a difference in the world. Which is sustainability at its best.

Let this report be a gift for your soul.

Welcome to your Personalized Report. This Report is based on your selections on the SMI. It is meant to be a personal development tool, to highlight aspects of your understanding, behaviors and feelings related to your Sustainability Mindset (SM).

You will find observations that you may identify with, others that you vaguely recognize, and others that perhaps don't resonate with you. Keep what you need and what makes sense to you.

You will also find questions to consider, suggestions for things you can try, and information related to the aspects covered in this report, and how these are related to the Sustainability Mindset.

Take your time reading your Report. Pause, take notes, and reflect. It is all about you, and for you. There were no wrong answers in the survey. Only good options and perhaps some that you hadn't thought of.

/WHAT YOU WILL FIND IN THE FOLLOWING PAGES

This Personalized Report is organized into several sections. The first section contains a graph, displaying how the different aspects assessed compare to each other, according to your choices in the survey. Those that occupy a larger area are your stronger ones and the narrower or missing ones are aspects of the Sustainability Mindset that are less developed or absent for you, as inferred from the combination of your answers.

The next section presents personalized descriptions of where you find yourself on your journey towards a Sustainability Mindset, in four clusters: Ecological Worldview, Systems Perspective, Emotional Intelligence, and Spiritual Intelligence.

Within each of these clusters you will find what aspects were assessed, and a graph for each aspect displaying how you connect to this topic, whether intellectually, through your actions and behaviors and/or by engaging your emotions.

If you see some areas missing within the graph, it means that either you selected “neither” for that question and therefore we don’t have information to report on, or your answers suggest you don’t engage in one or more areas (cognitive, behavioral, or affective). Similarly, if you selected “neither” for all the questions within one Sustainability Mindset Principle, we don’t include a graph, since we don’t have information to report on.

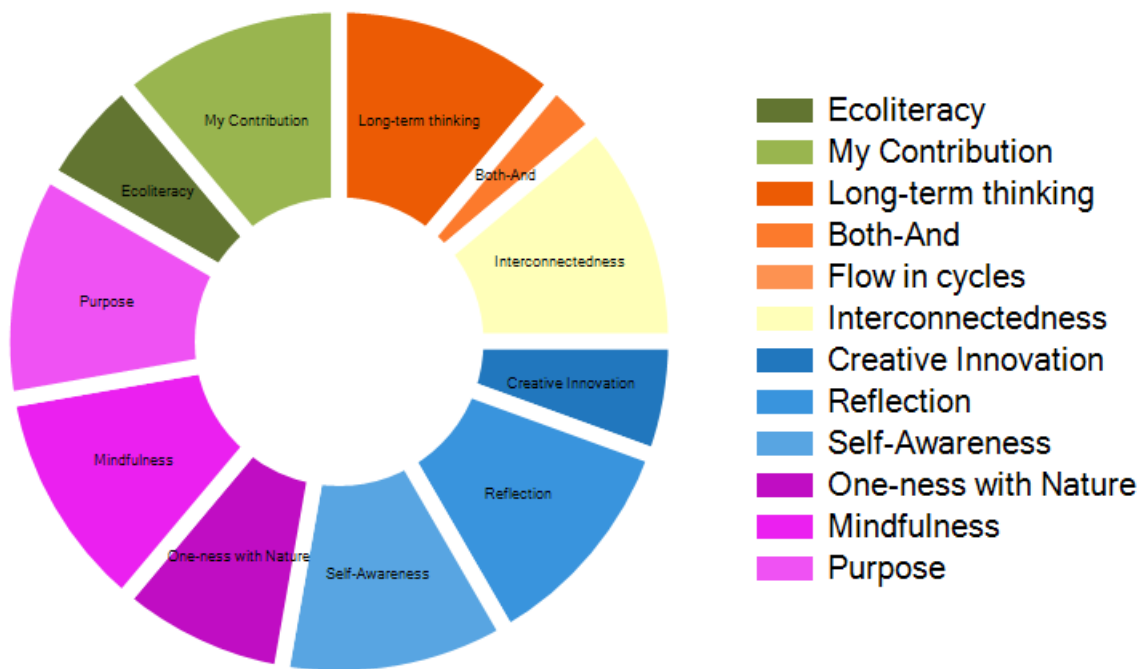
Each graph is accompanied by a box with a brief explanation, and you will find much more information in the text to include what your choices suggest, why this Principle is key for a sustainability mindset, and questions to ponder and suggestions to try.

Enjoy your journey into the realm of the Sustainability Mindset - a place where you can be your best, for yourself and for the World.

The SMI Team

**/ Your overall SUSTAINABILITY
MINDSET PROFILE**

The graph below shows your personal profile, indicating how – relatively to each other – you have developed your Sustainability Mindset. The wider sections indicate your stronger areas, and vice versa.

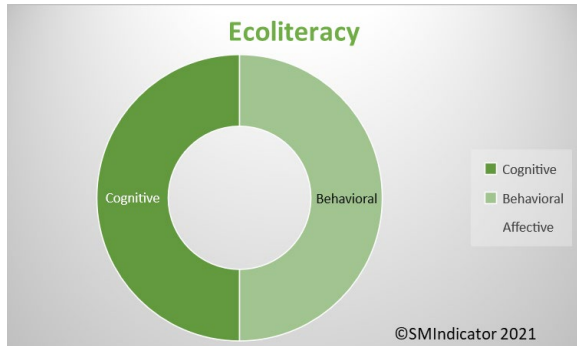




/ECOLOGICAL WORLDVIEW

An ECOLOGICAL WORLDVIEW is the result of having an intellectual and affective broad understanding of the planetary challenges, how they are interrelated, and how we are contributing to them.

/WHAT IS ASSESSED HERE: HOW YOU UNDERSTAND THE ENVIRONMENTAL AND SOCIAL CHALLENGES, AND HOW YOU FEEL ABOUT IT, AND THE IMPACT ON YOUR BEHAVIORS.



What this tells you:

If a graph shows the two dimensions - cognitive and behavioral - it means that your tendency is to distance yourself from your feelings, particularly in the aspect assessed here. You have a good understanding about it, and are acting upon it, but you might want to further explore your emotions in relation to it.

YOUR SMI RESPONSES INDICATE THAT you have a good understanding of the complexity of the planetary challenges we are facing, and how they are interrelated.

Furthermore, in your daily decisions **you are comfortable** acting in ways that can minimize your ecological or social footprint, and/or help the sustainability of our planet.

That said, you seem to be emotionally distanced from negative feelings related to the state of our society or our planet.

**/THINK ABOUT HOW YOU CAN FURTHER
LEVERAGE YOUR STRENGTHS AND MANAGE
SOME OF THE LIMITATIONS WHICH MAY BE
HOLDING YOU BACK:**

The benefit is that this saves you from stress, and may help you stay focused on your daily reality. The downside is that you may miss engaging from the heart, and connecting with your deeper values and with others suffering or in need, which can be a very powerful experience. You are present with your head, but not necessarily with your heart and soul.

/THOUGHTS TO PONDER WHEN YOU CONSIDER THE SM:

We are definitely living in a time of information overload. It is challenging to stay on top of all that is happening, while keeping up with our own obligations and activities. Furthermore, sustainability news tends to be on the negative side, creating doomsday scenarios and scary prophecies that can trigger anxiety, and not precisely inspiring us to act. We may tend to avoid the news because they make us feel bad, sad, or concerned.

Yet we tend to underestimate our own power and influence in shaping a better world. As a matter of fact, if the challenges we are currently experiencing are a product of past problematic behaviors, then we are also positively shaping the future of the planet with our current mindful decisions and restorative actions. Understanding the scope of the sustainability challenges, from the environmental and social perspective, allows us to start noticing linkages, relationships and connections.

The other powerful path is in our emotions.

/HOW ABOUT YOU TRY:

When we allow ourselves to connect from the heart with the reality of the news and find small ways to change our behavior, we are more present and don't need to live with our divided selves. This can be more fulfilling.



Understanding the state of the planet allows us to be more fully aware of the challenges, the complexity of how they are linked to each other, and to explore what it means to us.

**/WHAT IS ASSESSED HERE:
HOW YOU SEE THE RELATION
BETWEEN INDIVIDUAL DECISIONS
AND PLANETARY CHALLENGES, HOW
YOU FEEL ABOUT IT AND THE
IMPACT ON YOUR PERSONAL
BEHAVIORS.**



What this tells you:

When the graph is well balanced, it means that you have a good understanding of the aspect of the Sustainability Mindset being assessed, that you can connect with your feelings about it, and that you tend to act upon what you know and feel. This is a good start, and you might want to think about circumstances or contexts in which you would like to act more, understand better or further explore your feelings.

YOUR SMI RESPONSES INDICATE THAT you periodically ponder if you are personally playing a role in the world's social or environmental problems of the world. Certainly, you didn't create the problems intentionally, but you seem to pause and wonder in what ways you may be contributing to them.

/THINK ABOUT HOW YOU CAN FURTHER LEVERAGE THOSE STRENGTHS AND MANAGE SOME OF THE LIMITATIONS WHICH MAY BE HOLDING YOU BACK:

Because you are a very sensitive person, with an open heart, realizing that you are part of the problem may bring up feelings of guilt, sadness, despair, or anxiety.

Yet are you aware that your ability to connect truthfully to your own emotions is actually a valuable skill that is much needed in the world? Your sensitivity also helps you to feel for others, with empathy and compassion for their suffering. This is a precious quality, although at times it can be difficult to live with it.

/YOU ARE COMFORTABLE WHEN you find a way to convert the emotional energy into action, by taking a proactive role. Instead of remaining "the victim," you choose to act. You find small ways in which you are contributing to the problems and seek out those changes you could make to be less a "part of the problem" and become part of the solution. This is a wonderful start!

The more you observe, the more opportunities you will find to make a real difference with a few simple changes to your behavior and habits.

/THOUGHTS TO PONDER WHEN YOU CONSIDER THE SM:

Thinking of how we are personally contributing to the planetary challenges may not be something we do daily. Our demanding lives have many obligations and don't leave much time for reflecting on this. We are busy getting things done! Yet when analyzing the current un-sustainability of our planet, science has clearly established a link between human behaviors in past decisions and the current problems we face.

Much attention is now focused on how to repair the damage done, and how to restore endangered or depleted resources. Scientists and entrepreneurs study how to minimize current or future problems at the environmental or social level, and how to innovate to avoid negative impacts into the future.

If we collectively influenced the place, we find ourselves in now (with all its problems), that means we also hold the key to influence where we will collectively be in the future – we: meaning humankind at large, or, from a closer perspective, our families, children, and grandchildren.



When we identify the ways in which we are unintentionally contributing to the problems, we have a chance to do something about them. It also expands our consciousness and develops social sensitivity.

/HOW ABOUT YOU TRY:

What do you see as your next developmental frontier? Consider how to make a more frequent habit of asking yourself “How am I contributing to this?” This question opens a path of inquiry, which automatically leads to expansion of your consciousness. You become more alert to take notice, and thus more open to try out new behaviors.

This same question, by the way, is also a powerful tool that can improve our relationships and interactions with others! So often we focus on what others are doing unto us, which leaves us powerless. When we learn to pay attention to what is our role in the problems we endure, we regain control and can actually do something.

Actively thinking about your contribution is definitely an important milestone in your personal development, with planetary implications.

Other possibilities to ponder: To be more creative in your actions, perhaps use more of your unique talents to make a difference.

How might you connect more from the heart with others?

Food for thought!



/SYSTEMS PERSPECTIVE

When analyzing information and making decisions a SYSTEMS
PERSPECTIVE has a major impact on the sustainability of our actions.

**/WHAT IS ASSESSED HERE:
HOW YOU THINK ABOUT THE LONG-
TERM IMPACT WHEN ANALYZING
AND MAKING DECISIONS,
COMPLEMENTING SHORT-TERM
THINKING; HOW YOU FEEL ABOUT
IT, AND THE IMPACT ON YOUR
BEHAVIORS.**



What this tells you:

When the graph is well balanced, it means that you have a good understanding of the aspect of the Sustainability Mindset being assessed, that you are able to connect with your feelings about it, and that you tend to act upon what you know and feel. This is a good start, and you might want to think about circumstances or contexts in which you would like to act more, understand better or further explore your feelings.

YOUR SMI RESPONSES INDICATE THAT you have a good understanding of the long-term sustainability impacts that our decisions may have, even the simple and daily ones, not to mention behaviors commonly accepted in our society.

In addition, this understanding is not indifferent to you: You are a sensitive person who seems to get worried about the long-term impact that your decisions or lifestyle may be having on the planet. It is difficult to live with this feeling!

/YOU ARE COMFORTABLE WHEN you convert the emotional motivation into actions. In this case, you seem to have a natural tendency to think of “what ifs” and the long-term consequences of possible decisions before taking them.

This may not always be welcome in a team setting, but from the perspective of shaping a sustainable world, this contribution is a great asset to yourself and to your working groups. Your perspective will likely enrich actions, as they result from considering potential impacts in the longer term.

You probably sense that the world around demands a fast pace, decisiveness, focusing just on the tangible short term and continues as if no such thing as a long-term impact would be realistic. But change never starts as mainstream, and you may be showing a new way of doing things – for the sustainability of the whole.

/THOUGHTS TO PONDER WHEN YOU CONSIDER THE SM:

There is definitely a tacit pressure to act promptly and focus on that which needs immediate attention. This is very important, and there are many circumstances where this way of responding is the optimal, or even the only one that matters. A fire in the house, for example. We can sense the urgency and it is not a good idea to pause and reflect on the long-term implications of the fire.

But for many daily decisions the context is different, and yet we still prioritize short-term thinking, often without even weighing any medium- or long-term impacts of what we are doing. The stream of life, our colleagues, perhaps everyone with whom we interact takes for granted that we “all” act this way.

On the other hand, with greater understanding of the social and environmental problems we are facing, it has become clear that the law of cause-and-effect is always at play, even if not immediately obvious. In

other words, the consequences of our daily actions do have impacts - some over time, some just in a different geography, and many on both.

As with other aspects which are key for a sustainability mindset, it is not a question of choosing one over the other, but a matter of balancing both views and taking both time horizons into account.

This mental habit expands our consciousness, as we become more aware of the way we are impacting others and the world. Not thinking about this doesn't stop it from happening. Stretching our imagination to consider potential impacts across time helps us make better decisions, and play a more active role in shaping a better world.

This is something about which you seem to know quite a lot.

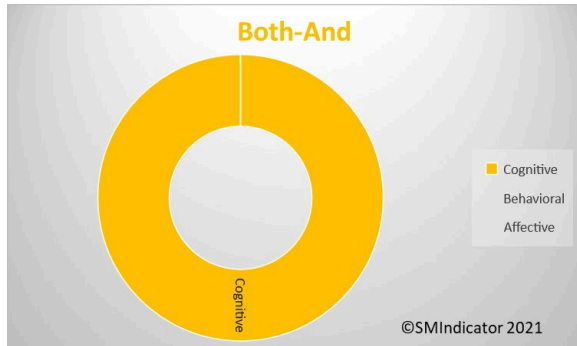
/HOW ABOUT YOU TRY:

How comfortable are you bringing the long-term perspective into the conversation? Do you sense that sometimes you hold back, because it is not so popular? Are you fully aware that your perspective, by not being culturally mainstream, is what we all need more? Is this something that may encourage you further to speak up?



Every action has consequences that are not immediately visible. Considering the long-term when analyzing situations and making decisions has a positive impact on global sustainability.

**/WHAT IS ASSESSED HERE:
HOW YOU THINK ABOUT AND DEAL
WITH AMBIGUITY AND PARADOXES,
HOW YOU RECOGNIZE DIVERSITY,
FEEL ABOUT IT AND ACT TOWARDS
IT.**



What this tells you:

This graph shows only one dimension – cognitive - meaning that you have an intellectual understanding about this aspect. You are not necessarily engaging your feelings nor converting them into actions. You might use this information to explore your emotions related to this aspect of the sustainability mindset, and perhaps find ways to convert your understanding into actions.

YOUR SMI RESPONSES INDICATE THAT you know that it is important to listen to others’ perspectives, and to find solutions that can accommodate diverse needs, even compromising what is important to one or the other.

At the same time, you are a pragmatic person that likes clarity in life. You feel most comfortable with clear choices - black and white options - and find a sense of stability and reassurance in holding onto your values and your worldview.

/YOU ARE COMFORTABLE when faced with a new situation, you can rapidly frame it within what you have learned is “right” or “wrong.” This useful for avoiding gray areas, although you may miss understanding the complexities of a situation.

There may be a tension between your understanding of the importance of inclusion, and your behaviors prioritizing right/wrong distinctions. Your choices in the questionnaire indicate that you may feel a certain tension, as you realize that you may be perceived as not being very inclusive. The point is that your heart remains true to values you were taught and respect.

/THINK ABOUT HOW YOU CAN FURTHER LEVERAGE THOSE STRENGTHS AND MANAGE SOME OF THE LIMITATIONS WHICH MAY BE HOLDING YOU BACK:

Because much of the world is changing, you may feel compelled to be more understanding with others’ perspectives, but this doesn’t come easy to you, and you may feel frustrated or impatient.

Of course, you wish there would be a solution that might make everyone happy, one that accommodates diverse ways of seeing the economy, ecosystems, humans, and the planet, but you don’t think this may be realistic.

/HOW ABOUT YOU TRY:

Here is a question to consider: Can you think of an event or situation, however minor, where someone with a different opinion was able to step into your shoes? How did it make you feel? How did it impact your attitude and your behavior?

What if we could shape a world that makes room for different perspectives? Where you acknowledge others' points of view, and yours are also included by others? Since we cannot control what others think or do but do have control over our own way of thinking, there may be an interesting path worth exploring here.

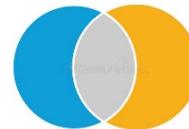
/THOUGHTS TO PONDER WHEN YOU CONSIDER THE SM:

Many of our world's sustainability challenges originate in choices such as: "either the planet or the economy" and "either protect the wolves or the farmer." Yet, *either-or* choices can be misleading, and have us believe there are win-lose solutions that work. But do they really? If the cost is high, do they still work? When we find ourselves in a situation where we see it the right way, and others are wrong, what may we be missing that these others are seeing? How could we all benefit from having a fuller picture?

It seems that today, more than ever, we are collectively being confronted with paradoxes and ambiguity. Increased transparency and access to information from around the world makes us aware of very different ways of thinking, being and acting with which we may not agree or be comfortable. Challenging as this may be, there is a benefit to it: We are becoming aware of our own worldviews just by realizing that there are other ways of seeing and feeling. This is an evolutionary insight of great value, the foundation for more peaceful societies.

In a way, life is prompting us to expand our understanding and our scope of caring, which go hand in hand. When we understand something, we can begin caring.

This is the start of a better world for all.



Both+and thinking allows us to understand paradoxes and calls for creative solutions that are inclusive of all stakeholders.

**/WHAT IS ASSESSED HERE:
HOW YOU BALANCE YOUR CAPACITY
TO ANALYZE AND PLAN WITH THE
UNDERSTANDING OF NATURAL
CYCLES, AND MAKE THEM PART OF
YOUR MINDSET.**

YOUR SMI RESPONSES INDICATE THAT you are a person who is profoundly committed to actions, who enjoys the challenges life offers, and looks at them as opportunities to find intelligent solutions. Indeed, intellectual abilities are important for you, as they permit you to control difficult situations.

/YOU ARE COMFORTABLE crafting plans and setting goals to measure your progress. And if a problem is beyond your control, as many sustainability-related problems are, you rely on those who are capable of solving them. You strongly believe and trust in human ingenuity to figure out solutions for our environmental or social problems.

This allows you to feel empowered and in control, which is a nice feeling, particularly as it avoids the stress of uncertainty. You seem to enjoy making plans and implementing them, and derive a sense of fulfillment and satisfaction when you achieve the goals you set for yourself.

**/THINK ABOUT HOW YOU CAN
FURTHER LEVERAGE THOSE
STRENGTHS AND MANAGE SOME
OF THE LIMITATIONS WHICH MAY
BE HOLDING YOU BACK:**

While planning is a way to feel in control of situations, it is constantly challenged since life -

with its countless variables - is too complex to be managed.

Do you experience frustration at times when things don't work out as you planned, or expected? How do you react? Do you let go of your plans and observe what the events are telling you, or do you use persistence and incremental efforts to stay on top of your planned course?

**/THOUGHTS TO PONDER WHEN YOU
CONSIDER THE SM:**

You may be wondering why planning is related to several key aspects for a sustainability mindset. The connection is not in the planning as an activity per se, but in the way we think and process information when we plan. Planning is about organizing and structuring in order to control outcomes. Planning is linear by definition -one step after the other - and it assumes cause-effect relationships. But what about multi-effects, multi-causes, and feedback loops?

Contrast this with the sustainability problems we are facing. To begin with, they are complex and multidimensional by their very nature. Many are the result of our linear thinking, for example we believe that we can pursue unlimited growth, yet depletion of natural resources shows us this is not possible.

Our reliance on the human mind can create a collective assumption that we are in control, but a "small" manifestation like Covid-19 arrives as a surprise to debunk the myth of our own superiority.

/HOW ABOUT YOU TRY:

Planning in itself is not the problem but rather, excessive reliance on carefully crafted steps. How do you incorporate the cycles of nature into your planning? As an example, do you accept phases of

growth and decline - aging and impermanence, along with endings and mortality followed by new beginnings and birth? How do you incorporate humanity as part of Nature, rather than its controller?

Many implications, indeed.

Here a few thoughts to ponder. Do you see yourself balanced in terms of making and letting go of plans? How do you balance structure and flow, organization and flexibility?

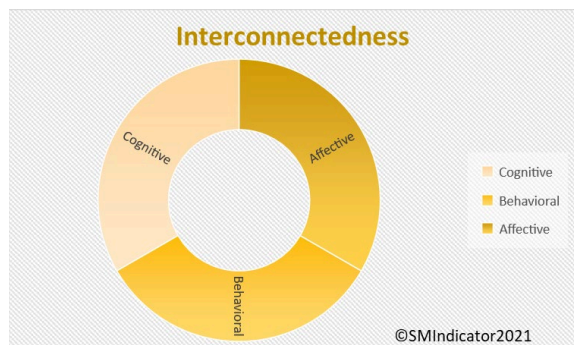
Relaxing your grip on plans may cause uncertainty, yet like swimming along with the river's current, it can also increase your speed, and reduce the stress of resisting obstacles. Worth a try.

There are no linear processes in Nature: Everything flows in cycles of birth, growth, death, and rebirth.

Many aspects of man-made unsustainability of the planet are a result of the misconception that we are not governed by this law of Nature.



/WHAT IS ASSESSED HERE: HOW YOU UNDERSTAND AND EXPERIENCE INTERCONNECTEDNESS, VERSUS VALUES LIKE AUTONOMY AND INDEPENDENCE.



What this tells you:

When the graph is well balanced, it means that you have a good understanding of the aspect of the Sustainability Mindset being assessed, that you are able to connect with your feelings about it, and that you tend to act upon what you know and feel. This is a good start, and you might want to think about circumstances or contexts in which you would like to act more, understand better or further explore your feelings.

YOUR SMI RESPONSES INDICATE THAT you have a clear understanding that we are all interconnected, even in non-obvious ways, and that no one is really fully independent.

You are comfortable seeing yourself as part of a larger whole, and you pay attention to the input of stakeholders when analyzing a problem and seeking effective solutions. In addition, you are appreciative about other people's input and support. You thrive in collaborative environments,

welcome participatory solutions and feel grateful for the help of others.

This is a precious combination in the current times! While certain cultures have a collectivistic framework, most of the western-northern culture - widely exported and globalized - is individualistic and celebrates personal achievement. But you know this is neither realistic nor feasible.

/THINK ABOUT HOW YOU CAN FURTHER LEVERAGE YOUR STRENGTHS AND MANAGE SOME OF THE LIMITATIONS WHICH MAY BE HOLDING YOU BACK:

Do you experience an unspoken expectation in your daily life - to be independent, to outperform others, to be self-reliant or perhaps to demonstrate your value in competitive settings? Have you sensed the contradiction between these two paradigms, one valuing competition and self-reliance, the other promoting collaboration and inclusion? How do you manage the tension, and are you able to share your perspective with others, perhaps helping to expand their thinking horizons?

/THOUGHTS TO PONDER WHEN YOU CONSIDER THE SM:

The polarities of independence vs. interconnectedness and competition vs. collaboration are of particular relevance when focusing on sustainability. The environmental and social challenges are complex and multidimensional, making it impossible for any person to solve on their own. It is only through collective thinking, action and collaboration of multiple stakeholders that we will be able to develop alternatives. (This, by the way, makes sustainability a great opportunity for contributing personal skills to a larger cause).

/HOW ABOUT YOU TRY:

With your valuable perspective, how do you handle situations when others don't see the urgency of collaboration but rather respond from the old paradigm of autonomy and competition?

Here is a tip that may come handy. Invite them to name one achievement that was purely, authentically, their own, without any other person playing a role in it.

When we see interconnectedness, we understand the importance of diversity, and our decisions and actions become more inclusive, which contributes to the sustainability of the whole.

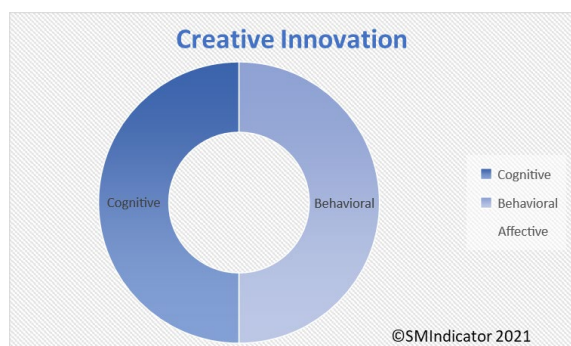




/EMOTIONAL INTELLIGENCE

Understanding ourselves through the anchors of our identity, the pace of our life, and how we consider our intuitive wisdom are key for a sustainability mindset.

**/WHAT IS ASSESSED HERE:
HOW YOU INCORPORATE NON-
RATIONAL INFORMATION, INTUITIVE
KNOWING, CREATIVITY AND
IMAGINATION IN ORDER TO
BALANCE RATIONAL THINKING, AND
HOW YOU FEEL ABOUT IT.**



What this tells you:

If a graph shows the two dimensions - cognitive and behavioral - it means that your tendency is to distance yourself from your feelings, particularly in the aspect assessed here. You have a good understanding about it, and are acting upon it, but you might want to further explore your emotions in relation to it.

YOUR SMI RESPONSES INDICATE THAT you have a clear understanding of the value of combining your logical and analytical thinking abilities with creative imagination. You know that the human mind is capable of great accomplishments, as history has shown, when intuition and creative ideas are coupled with rational thinking and good strategies. You may even trust that our sustainability problems could be addressed with a good balance of these abilities.

You are quite comfortable in situations where you can contribute by putting your “creative hat” on, by being playful, by not preemptively censoring your ideas, and even tolerating the uncertainty of not knowing how something will work out.

**/THINK ABOUT HOW YOU CAN FURTHER
LEVERAGE YOUR STRENGTHS AND
MANAGE SOME OF THE LIMITATIONS
WHICH MAY BE HOLDING YOU BACK:**

You seem able to live with a certain degree of risk-taking, and based on your answers, that worked well for you. How did that feel? Because your responses also reveal a personal preference for more structured situations, where you can think something through and craft some concrete strategies to implement a solution.

You indicate that you enjoy organizing reality into priorities, and when you can follow proven steps. Order is something you cherish, disliking the uncertainty of chaotic situations.

This must create some tension - between your need for order and strategic plans and your moments of unleashed imagination!

**/THOUGHTS TO PONDER WHEN YOU
CONSIDER THE SM:**

You know that the sustainability challenges we are facing are largely new, and as COVID-19 taught us, increasingly situations arise for which we don’t have previous experience or science on which to rely. We have become more aware of this complexity of our challenges, and we are skeptical of simplistic solutions.

However this also requires entry into uncharted territories. Resilience calls for flexibility in adapting to new situations, and this entails innovating and experimenting, as you indicate you sometimes do. Definitely having no clear blueprints to follow may be disturbing, yet there are no choices but to take some risks. And fortunately you can handle them.

/HOW ABOUT YOU TRY:

This seems to be your current challenge: How can you feel a bit more comfortable bringing your rich creativity and risk acceptance into other situations? You have a very valuable asset in the ability to unleash your imagination. Can you imagine if you could fully enjoy and deploy it, letting go of any fears and concerns?

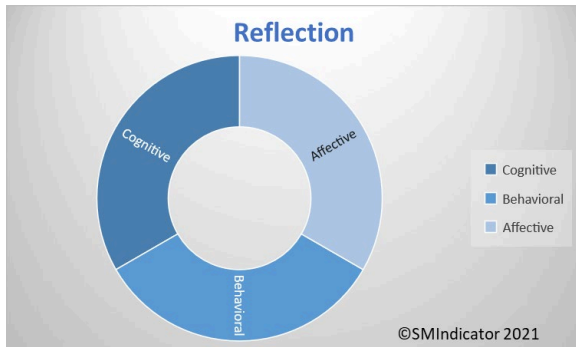
Here is a thought to ponder: What would have to be true and how can you influence this?

It seems that you have a reservoir of imagination and perhaps intuitive wisdom, which you are already tapping into. This may come at a personal cost, in the form of “what-ifs,” concerns and maybe even fears. But if you find ways learn to trust your intuition, you will flourish further and enjoy it more. This, complemented with your strategic thinking, will maximize your achievements for the benefit of all.

Resilience is based on constant creativity, innovation, and experimentation. When we neglect the non-rational wisdom we have in us, our solutions are missing critical information, and may create negative impacts on the ecosystem and society.



**/WHAT IS ASSESSED HERE:
HOW YOU NOTICE YOUR OWN PACE,
AND HOW YOU BALANCE RAPID
RESPONSE WITH MAKING TIME TO
PONDER AND REFLECT BEFORE
ACTING. AND HOW THIS MAKES
YOU FEEL.**



What this tells you:

When the graph is well balanced, it means that you have a good understanding of the aspect of the Sustainability Mindset being assessed, that you are able to connect with your feelings about it, and that you tend to act upon what you know and feel. This is a good start, and you might want to think about circumstances or contexts in which you would like to act more, understand better or further explore your feelings.

YOUR SMI RESPONSES INDICATE THAT you have a sense that we are collectively trapped in an accelerated pace.

Perhaps you notice your own speed, or see it in others. The fact is that you observe and seem to think about this phenomenon, and may be asking yourself about the cost of this upon you or others. How is it possible to contemplate the future

implications of decisions taken under the pressure of speed?

You are comfortable seeking a slower pace of life. It makes you feel better, more relaxed or lowers your stress levels.

Furthermore, it seems that you frequently pause and explore what might be at stake in a decision, or check the assumptions at play before acting. This behavior, seemingly at odds with how the world works these days, must have given you good results in the past, which reinforced it and now keeps you decelerating in critical moments.

Congratulations if this is the case, since you are helping to avoid many problems in the future. A valuable and timely contribution!

/THOUGHTS TO PONDER WHEN YOU CONSIDER THE SM:

Since we are looking at these aspects from the perspective of a sustainability mindset, let's pause and think about what behaviors might be most effective as well as much needed.

While there is a call for urgent action about climate change and the related social and environmental problems, many modern sustainability challenges are actually the result of overlooked prior potential impacts. For decades, well-intended decisions were largely made by quickly identifying the best option.

But today we are understanding better that problems are complex, that solutions impact a multiplicity of future stakeholders, and that there are always consequences.

Of course, it is not possible to anticipate all scenarios, but pausing and checking assumptions can be very useful to avoid future problems.

/THINK ABOUT HOW YOU CAN FURTHER LEVERAGE YOUR STRENGTHS AND MANAGE SOME OF THE LIMITATIONS WHICH MAY BE HOLDING YOU BACK:

For example, what can we learn to avoid or repeat from past experiences? Can we identify, in hindsight, something that was at stake and overlooked because we were trying to act fast? When we have more information we can better weigh alternatives. All of this, however, is at odds with speed. We cannot both act fast and ponder carefully.

What might be new ways of combining urgently needed actions with careful exploration of their impacts? *What role could you see there for you?* Do you think you could be more vocal and perhaps find more courage to offer a perspective that certainly is not mainstream?

/HOW ABOUT YOU TRY:

According to your answers, you seem to be gifted with the understanding that something is not right. *In what areas do you see your next developmental horizon?* Perhaps it is to more confidently share a different way of being and living with others?

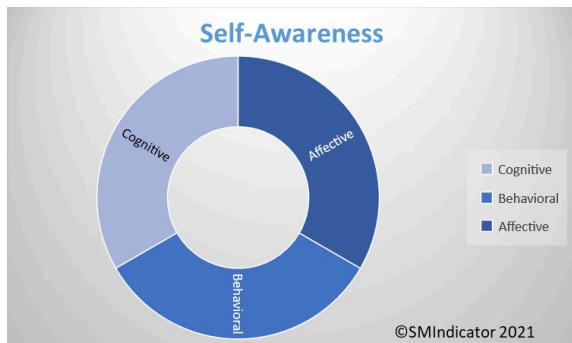
And at a personal level, does it happen to you that you wish you could relax more, slow down or do nothing? Does your body, your mind or perhaps your soul call for a break, less stress? What message may be there for you, waiting to be heard and acted upon?

A lot of food for thought!

Reflective practices help to pause, and to ponder the situation and its implications before jumping into action.



/WHAT IS ASSESSED HERE: HOW AWARE YOU ARE ABOUT THE ANCHORS OF YOUR IDENTITY AND YOUR VALUES; HOW YOU FEEL AND ACT IN CONSEQUENCE.



What this tells you:

When the graph is well balanced, it means that you have a good understanding of the aspect of the Sustainability Mindset being assessed, that you can connect with your feelings about it, and that you tend to act upon what you know and feel. This is a good start, and you might want to think about circumstances or contexts in which you would like to act more, understand better or further explore your feelings.

YOUR SMI RESPONSES INDICATE THAT you believe the paradigm we have long been living with is due for a revision, because values like growth and progress may be linked to an assumption of unlimited resources, which may not be realistic.

You have been noticing that many of your daily automatic behaviors are actually not very environmentally friendly, or perhaps have some kind of negative social impact.

You are comfortable trying to make some changes, which probably wasn't easy. That didn't stop you from seeking new alternatives, new ways of lowering your ecological footprint, or even to make this planet a better place.

/ THINK ABOUT HOW YOU CAN FURTHER LEVERAGE THOSE STRENGTHS AND MANAGE SOME OF THE LIMITATIONS WHICH MAY BE HOLDING YOU BACK:

The changes are painfully slow or seem minimal to you compared to the size of the challenge. That creates some unpleasant feelings of misalignment, between what you do and how you would like to see yourself. You experience tension, as you scrutinize your image of self.

You may have been taught certain values, like being a winner, not being a loser, always remaining rational, having more to be more. And you became these values. But then something began to shift, and these values don't feel entirely OK any longer. This may make you feel confused, perhaps a bit guilty at times. You may even feel more grateful or indebted to others for their help in your achievements than stubbornly proud of being a self-made person. These are not easy times for you.

However, you are on a journey of consciousness development. Change starts with us noticing some discomfort about something, and we want to do something to feel better (or less bad). In this case, you seem to have taken several steps. Of course it can be overwhelming to think of the complex problems, but many times we underestimate the power of small changes.

Your understanding and intuition are not mainstream, and thus very important to drive much needed change. How happy are you with how you are sharing your valuable perspectives

with others? Do you feel you are doing it as much as you can?

/THOUGHTS TO PONDER WHEN YOU CONSIDER THE SM:

Let's pause for a moment.

This survey was designed around the Sustainability Mindset, which is a way of thinking and being, to optimally adapt to the moment in which we are living. This Mindset focuses on using our natural gifts to shape a better future, for ourselves and for all, the ecosystem included.

Research has proven that what may sound overwhelming, actually can be broken down into small, realistic ways to contribute to the greater good, and, as you well know, feel great at the same time. The first step is taking a fresh look at what surrounds us.

Undoubtedly, there are social and environmentally related challenges everywhere. Some happen locally, others across borders. Science has been linking many of these issues to human behaviors, such as consumption of unhealthy foods, depletion of natural resources, pollution or contamination of air, soil, and water. And we are left to deal with the consequences today, trapped in a paradigm that prioritizes values that have a negative impact, such as thoughtless consumption.

But at the same time, it's worth remembering that our habits today are still (unintentionally) contributing to more of these problems in the future. And vice versa: Small changes in a habit today can do their part to shape a better future.

/HOW ABOUT YOU TRY:

Have you identified some of your activities that may not live up to your personal expectations of living in a 'sustainable' way? In what new ways could you make some changes? Sometimes we do not have the power to control a situation, but we always have unlimited power to influence, with our words, attitudes, talking or writing.

How about exploring a few of your unused possibilities?

You don't know what you can do until you try. You may encounter some cynicism, but your actions will speak louder than your words, as it always happens. Worth trying, right?

When we explore our personal values, beliefs, assumptions, and motivations, we gain greater control over our actions, and we can see new alternative behaviors.





/SPIRITUAL INTELLIGENCE

The spiritual orientation to Nature, to ourselves and to others are key factors for a Sustainability Mindset, as they impact the quality of our actions.

**/WHAT IS ASSESSED HERE:
HOW YOU EXPERIENCE NATURE,
HOW YOU UNDERSTAND THE
HUMAN RELATIONSHIP WITH
NATURE, AND YOUR RELATED
FEELINGS AND BEHAVIORS.**



What this tells you:

This graph shows that your approach to the assessed topic is both cognitive and affective, but you are not necessarily translating what you know and feel into actions. You might use this information to explore new habits and daily changes for a sustainability purpose.

YOUR SMI RESPONSES INDICATE THAT you think of Nature as an experience that offers more wisdom than we can intellectually grasp. This understanding may be the result of some special moments, when you stood in awe admiring Nature, your heart perhaps filled with joy and some kind of wordless experience of beauty.

You see the limitations of pure rationality and realize that the intellectual capability is valuable for building scientific knowledge, but also frequently overstated. Our comprehension of the natural world, including

our bodies, has advanced over time, but in the history of science findings are always within the constraints of available instruments, paradigms, or assumptions. It is clear to you that over time, the development of more precise measurement techniques or revolutionary thinking has certainly revealed the myopic or biased conclusions of the past!

However, you are also comfortable acting with a utilitarian approach to natural resources, considering the rights granted by our belief in “human superiority”.

Without doubt, many scientific discoveries and improvements of our quality of life have shown the power of the human mind. Yet you may have also noticed that some betterments have come at a cost for the environment or society, and we are collectively paying that price, for example, soil erosion or waterway contamination from chemical crop fertilizers meant to enhance soil productivity.

The human-centric paradigm that we collectively adopted and believe has begun to show some shortcomings, inviting us to revisit our place and role in the larger ecosystem.

What are some undesirable consequences of human progress that you have personally experienced? What message may be in this for you?

/THINK ABOUT HOW YOU CAN LEVERAGE YOUR STRENGTHS AND MANAGE SOME OF THE LIMITATIONS WHICH MAY BE HOLDING YOU BACK:

The combination of your choices in this instrument seems to show a disconnect between what you believe and value, and your actions. You have been blessed with some powerful experiences of oneness with Nature that give you an empathic disposition, yet they don't seem to manifest in how you act. It

may be a way of blending into a context that rewards rational thinking and intellectual capabilities.

But is that who you really are?

/THOUGHTS TO PONDER WHEN YOU CONSIDER THE SM:

According to a 2018 United Nations study, over 55% of the world's population lives in urban areas, a proportion that is expected to increase to 68% by 2050. As a result, for many of us, the disconnection from Nature is rather “natural.”

Hectic life in large cities makes it difficult for us to remember that we are more than individuals moving through traffic and buildings. The common associations with the word “Nature” may be vacation time, a park, or a documentary. What about our food? Our body? The materials of every object we use?

We rely on and praise scientific progress, but history has demonstrated that scientific findings are always within the constraints of available instruments, paradigms, or assumptions and many myopic or biased conclusions have been revealed with the passage of time, the development of more precise measurement techniques and revolutionary thinking. Biomimicry, a discipline studying how Nature solves problems, has been highlighting the wisdom of billions of years of evolution, and suggesting that we may find more answers in Nature than through our human intellect.

In fact, indigenous people have demonstrated a more resilient lifestyle, based on an intuitive connection to Nature.

This disconnection from Nature leads to a utilitarian relationship: Nature is reduced to instrumental resources for human needs and wants, causing not only spiritual alienation, but is the root cause for many unsustainability behaviors. What impacts do you see from having a utilitarian relationship with Nature?

When we understand something, we start caring for it. Understanding that we are one with Nature, a species within species, is a profound experience that

can shape behaviors leading to a more harmonious relationship with the self, with each other and with all beings.

You seem to have experienced it: a sensorial, intuitive understanding. It is not something to be learned, but rather an experience that we allow to happen, and which makes us remember something we have always known but had forgotten.

/HOW ABOUT YOU TRY:

Sometimes we realize that our thinking, feeling, and acting are not aligned. When we notice it, we may feel discomfort and tension- something out of sync. A sustainability mindset is not just harmony with the ecosystem, but it starts within us.

Is there something you need to revise, to feel more authentically who you are? What part of you is still clinging to an old paradigm, and why might that be so?

Understanding that we are one with Nature, a species within species, is a powerful spiritual experience that can shape behaviors leading to a more harmonious relationship with each other and all beings.



**/WHAT IS ASSESSED HERE:
HOW YOU THINK ABOUT THE
MEANING, ROLE AND VALUE OF
MINDFULNESS AND ITS PRACTICE,
AND HOW YOU FEEL ABOUT IT.**



What this tells you:

When the graph is well balanced, it means that you have a good understanding of the aspect of the Sustainability Mindset being assessed, that you are able to connect with your feelings about it, and that you tend to act upon what you know and feel. This is a good start, and you might want to think about circumstances or contexts in which you would like to act more, understand better or further explore your feelings.

YOUR SMI RESPONSES INDICATE THAT you have a clear understanding of the world we live in and the importance of mindfulness.

You realize that consumption is rewarded, linking “who we are” with “what we do, have, or own”. You see this materialistic pattern in society, with its consequences on how we have to keep busy doing things, seeking to make money to be able to belong, feel respected and valued. You realize the

unfortunate impact that this implicit message has on our health and well-being. It’s like being trapped in a race to pursue an elusive and short-lived happiness.

/YOU ARE COMFORTABLE pausing periodically to re-center, experiencing the positive impact on how you feel with yourself, and how you interact with others.

Pausing and stepping away from our task clears your mind, and you can get back with renewed energy. Is this something you remember to do when you need it? If not, how could you help yourself remember it more regularly?

/THINK ABOUT HOW YOU CAN FURTHER LEVERAGE YOUR STRENGTHS AND MANAGE SOME OF THE LIMITATIONS WHICH MAY BE HOLDING YOU BACK:

The world you live in comes with many challenges that you need to attend. You seem to experience at times the tension and stress that comes with the daily difficulties. You may notice it in your health, sleeping patterns, or in how you relate to others as a result. When the reality is challenging and poses a high demand on your physical, emotional and psychological systems, you try to manage the best you can.

You may know that studies show the physical and emotional consequences of a constant focus on doing while overlooking the more profound dimensions of “being,” such as reflection, spiritual or religious practices, time to recharge and find ourselves, and time to connect with our deeper self. As a matter of fact, you find in some of those contemplative practices a helpful path to regain inner calm.

You seem to have a good understanding of the challenges of our current paradigm - the consequences of an imbalance between doing and

being, between mundane action and the attention given to our higher self, our soul.

So here are some questions for you to contemplate:

Understanding the achievement race that we live in, how do these thoughts align with your experience, and with your values?

Does your reality reflect the priorities that are important for you? If not, what are some small changes you can make?

What is mindfulness for you today: Is it a practice or a does it form a part of your lifestyle?

/HOW ABOUT YOU TRY:

What would need to be true for you to take your practice to the next level, and what might that look like for you?

How easy is it for you to “catch yourself” in the moment when you are not fully present, not mindfully listening, or letting your emotional reactions control you, as opposed to your wiser self?

/THOUGHTS TO PONDER WHEN YOU CONSIDER THE SM:

From the perspective of a sustainability mindset, mindfulness is both a key practice and an amazing result. Research has shown a direct link between individuals that have some contemplative practices not just with their physical and psychological health, but also with the emergence of feelings of empathy and compassion.

This creates a disposition towards positive social and environmental actions, and the resulting satisfaction feeds a positive reinforcing loop. In other words, the better we feel about something

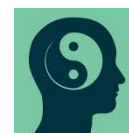
we’ve done, the more we seek to repeat the experience.

When we access and display a more balanced version of ourselves, we convey an unspoken message to the people with whom we interact, not just by what we say or how we behave, but through our attitude and energy. This has a proven positive influence on others, as science has identified with the phenomenon of “emotional contagion.”

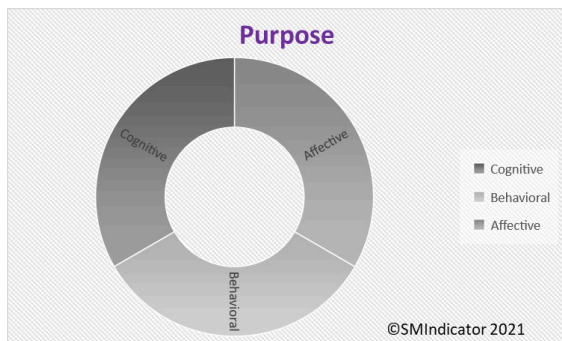
In other words, when we develop a sense of peace for ourselves, we are also radiating a gift of peace to the world.

You already know that.

Mindfulness is being fully present, experiencing connectedness with all that is. Mindfulness enhances awareness and compassion, and predisposes to social and environmental actions.



**/WHAT IS ASSESSED HERE:
WHAT YOU THINK ABOUT HAVING A
PURPOSE IN LIFE, PARTICULARLY
SOMETHING THAT IS IN SERVICE TO
OTHERS; HOW THIS FITS YOUR
REALITY AND HOW YOU FEEL ABOUT
IT.**



What this tells you:

When the graph is well balanced, it means that you have a good understanding of the aspect of the Sustainability Mindset being assessed, that you are able to connect with your feelings about it, and that you tend to act upon what you know and feel. This is a good start, and you might want to think about circumstances or contexts in which you would like to act more, understand better or further explore your feelings.

YOUR SMI RESPONSES INDICATE THAT you think it is important to find a purpose in life, to identify something that, by making a difference, makes our life meaningful. You actually state that you may have found it, through actions that serve others.

It is possible that part of your obligations and responsibilities are to serve others, to attend to their needs or expectations. Your work, family, perhaps relationships, form part of your reality

and use up your available energy – and you perceive this as your service. Or you may have found a cause where you can contribute your unique skills and talents, for the greater good.

Your choices in the questionnaire indicate that it is not a good feeling for you not to have a meaningful life. And you wonder if we are on journey of seeking and finding answers to the question of “Why am I here?”

Indeed, for some the answer is clear and endures over time. For others, it changes and makes us seek renewed answers. When what you are doing no longer satisfies you, it is actually a great signal. The tension we feel indicates that something has already begun to shift, and we are on a path of further growth and transformation.

/THOUGHTS TO PONDER WHEN YOU CONSIDER THE SM:

The research regarding core aspects for a sustainability mindset identified the role of activities intentionally done for the “greater good.” The state of our planet is such that it requires each of us to step up and play an active role in shaping a better world.

The actions needed, whether large or small, share a similar result: they provide us with a feeling of joy, which then we want to replicate to feel good again, thus creating a reinforcing loop. Interestingly, we tend to think that we need to take care of ourselves first, before helping others, but the facts show that when we do small acts of kindness for others, we feel much better ourselves.

/HOW ABOUT YOU TRY:

With this in mind, what are some new experiments you can try? What are some different things for

the greater good that you already did, and perhaps could repeat, do regularly, or improve? Which of your natural gifts and skills could you put into service for the greater good, in a cause for which you have a passion?

Don't get intimidated by grandiose words like 'changing the world' or having a life mission or purpose. In fact, each small action of kindness has already an impact that we may never be able to imagine. That is also changing the world, one interaction at a time.

Defining our purpose provides an unconscious compass, and when it is grounded in values of our higher self, we actively shape a better world.



[Please click HERE](#)

and provide us with a brief (1 min) Feedback.

Thank you!

