



Sustainability
Mindset
Indicator®

**/REPORT
PREPARED FOR:
fintech2024-12
16/Oct/2024**

If for every dollar in minute that we invest in AI, we invest another dollar in developing our own consciousness, our own mind, we will be ok. Yuval Noah Harari

FOOD FOR THOUGHT.

How ready do you feel you are to deal with the complexity we are living in? How do you respond to the increasing polarization, to the need to expand our attention to stakeholders impacted by our daily decisions? How comfortable are you planning and yet letting go of your plans as you consider the feedback that reality is giving you? How easy is it for you to adapt, revisit your assumptions, unleash your creativity, and innovate?

These are some of the key indicators of resilience.

We find comfort in our plans, in the 'known and tried out' ways of doing things. Yet this may also be the obstacle that slows us down when we need to find new ways of acting that have a better impact on the world. While much is talked about the future that awaits us, it's easy to forget that it is *us*, each one of us, who is shaping this future with our daily decisions and actions. Yet, rushed as we all live in these demanding times, we may not take the moment to pause, observe where we are, what our most precious goals and values are, and how our day, today, is reflecting those values, leading us to those goals. And what course corrections we may want to do!

This is the Era of Purpose. How mindful are you of your larger purpose? Setting a purpose becomes the compass offering certainty in a world filled with uncertainty. Are you giving yourself the gift of a pause, to ask yourself what your larger, higher purpose could be?

You may recognize in these lines some aspects that were addressed in the statements offered to you in the Sustainability Mindset Indicator, as you were invited to reflect and choose which best represented you. This report constitutes a picture, a map of your personal journey towards a resilient, purposeful, creative mindset for flourishing as an individual, making a difference in the world. Which is sustainability at its best.

Let this report be a gift for your soul.

Welcome to your Personalized Report. This Report is based on your selections on the SMI. It is meant to be a personal development tool, to highlight aspects of your understanding, behaviors and feelings related to your Sustainability Mindset (SM).

You will find observations that you may identify with, others that you vaguely recognize, and others that perhaps don't resonate with you. Keep what you need and what makes sense to you.

You will also find questions to consider, suggestions for things you can try, and information related to the aspects covered in this report, and how these are related to the Sustainability Mindset.

Take your time reading your Report. Pause, take notes, and reflect. It is all about you, and for you. There were no wrong answers in the survey. Only good options and perhaps some that you hadn't thought of.

/WHAT YOU WILL FIND IN THE FOLLOWING PAGES

This Personalized Report is organized into several sections. The first section contains a graph, displaying how the different aspects assessed compare to each other, according to your choices in the survey. Those that occupy a larger area are your stronger ones and the narrower or missing ones are aspects of the Sustainability Mindset that are less developed or absent for you, as inferred from the combination of your answers.

The next section presents personalized descriptions of where you find yourself on your journey towards a Sustainability Mindset, in four clusters: Ecological Worldview, Systems Perspective, Emotional Intelligence, and Spiritual Intelligence.

Within each of these clusters you will find what aspects were assessed, and a graph for each aspect displaying how you connect to this topic, whether intellectually, through your actions and behaviors and/or by engaging your emotions.

If you see some areas missing within the graph, it means that either you selected “neither” for that question and therefore we don’t have information to report on, or your answers suggest you don’t engage in one or more areas (cognitive, behavioral, or affective). Similarly, if you selected “neither” for all the questions within one Sustainability Mindset Principle, we don’t include a graph, since we don’t have information to report on.

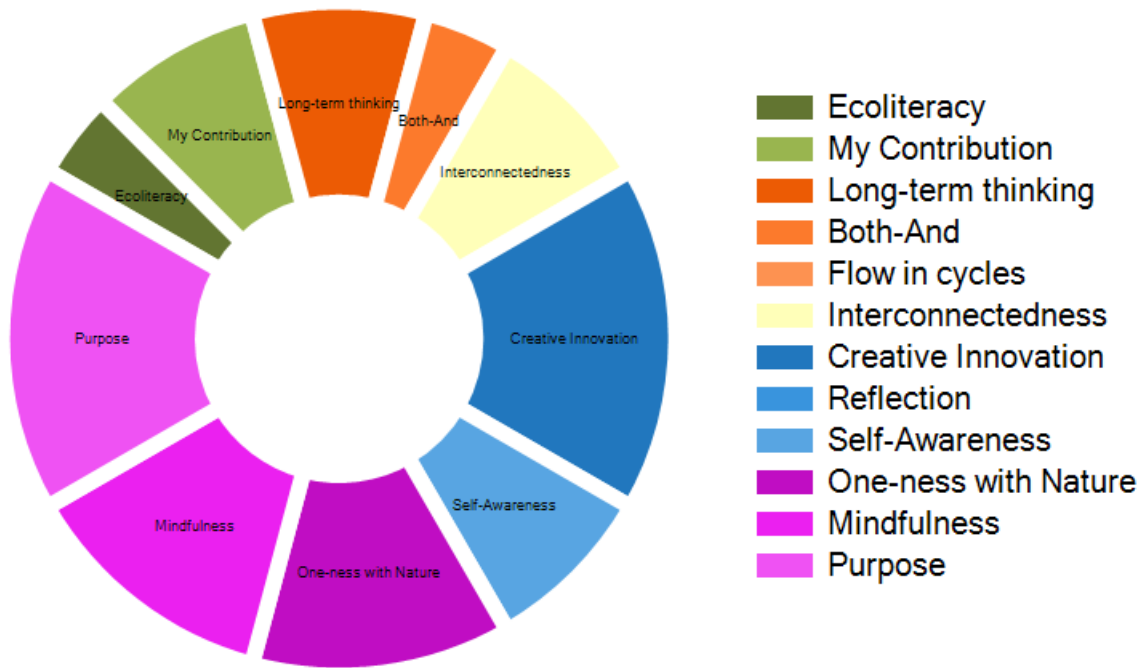
Each graph is accompanied by a box with a brief explanation, and you will find much more information in the text to include what your choices suggest, why this Principle is key for a sustainability mindset, and questions to ponder and suggestions to try.

Enjoy your journey into the realm of the Sustainability Mindset - a place where you can be your best, for yourself and for the World.

The SMI Team

**/ Your overall SUSTAINABILITY
MINDSET PROFILE**

The graph below shows your personal profile, indicating how – relatively to each other – you have developed your Sustainability Mindset. The wider sections indicate your stronger areas, and vice versa.

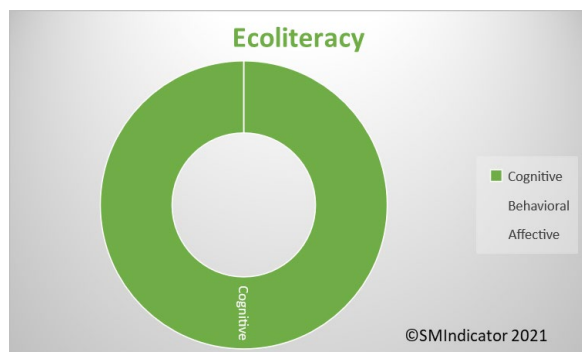




/ECOLOGICAL WORLDVIEW

An ECOLOGICAL WORLDVIEW is the result of having an intellectual and affective broad understanding of the planetary challenges, how they are interrelated, and how we are contributing to them.

/WHAT IS ASSESSED HERE: HOW YOU UNDERSTAND THE ENVIRONMENTAL AND SOCIAL CHALLENGES, AND HOW YOU FEEL ABOUT IT, AND THE IMPACT ON YOUR BEHAVIORS.



What this tells you:

This graph shows only one dimension – cognitive - meaning that you have an intellectual understanding about this aspect. You are not necessarily engaging your feelings nor converting them into actions. You might use this information to explore your emotions related to this aspect of the sustainability mindset, and perhaps find ways to convert your understanding into actions.

YOUR SMI RESPONSES INDICATE THAT you seem to have a good understanding of the complexity of the planetary challenges we are facing, and how they are interrelated.

This appears, however, to be an intellectual understanding and not necessarily connected to your feelings or to your personal life. As a consequence, your sense of urgency is limited and your need to personally change behaviors towards achieving greater sustainability is moderate, at best.

/YOU ARE COMFORTABLE distancing yourself from a challenging reality, which allows you to avoid disturbing feelings about the state of our planet, the

ecosystem, or social injustice. The emotional distance helps you stay focused on your daily reality.

THINK ABOUT HOW YOU CAN FURTHER LEVERAGE YOUR STRENGTHS AND MANAGE SOME OF THE LIMITATIONS WHICH MAY BE HOLDING YOU BACK:

The downside is that you may miss engaging from the heart, and connecting with your deeper values and with others suffering or in need, which can be a very powerful experience. You are present with your head, but not necessarily with your heart and soul.

You also may miss an opportunity to make a difference with modest decisions and actions that could impact your future, your loved ones or the next generation.

/THOUGHTS TO PONDER WHEN YOU CONSIDER THE SM:

We are definitely living in a time of information overload. It is challenging to stay on top of all that is happening, while keeping up with our own obligations and activities. Furthermore, sustainability news tends to be on the negative side, creating doomsday scenarios and scary prophecies that can trigger anxiety, and not precisely inspiring us to act. We may tend to avoid the news because it makes us feel bad, sad, or concerned.

Yet we tend to underestimate our own power and influence in shaping a better world. As a matter of fact, if the challenges we are currently experiencing are a product of past problematic behaviors, then we are also positively shaping the future of the planet with our current mindful decisions and restorative actions.

That opens up one interesting path. Understanding the scope of the sustainability challenges, from the environmental and social perspective, allows us to start noticing linkages, relationships and connections.

The other powerful path is in our emotions. When we allow ourselves to connect from the heart with the reality of the news and find small ways to change our behavior, we are more present and don't need to live with our divided selves.

This can be very fulfilling.



Understanding the state of the planet allows us to be more fully aware of the challenges, the complexity of how they are linked to each other, and to explore what it means to us.

**/WHAT IS ASSESSED HERE:
HOW YOU SEE THE RELATION
BETWEEN INDIVIDUAL DECISIONS
AND PLANETARY CHALLENGES, HOW
YOU FEEL ABOUT IT AND THE
IMPACT ON YOUR PERSONAL
BEHAVIORS.**



What this tells you:

If a graph shows the two dimensions - cognitive and behavioral - it means that your tendency is to distance yourself from your feelings, particularly in the aspect assessed here. You have a good understanding about it, and are acting upon it, but you might want to further explore your emotions in relation to it.

YOUR SMI RESPONSES INDICATE THAT you periodically ponder if you are personally playing a role in the world’s social or environmental problems of the world.

Certainly, you didn’t create the problems intentionally, but you seem to pause and wonder in what ways you may be contributing to them.

/YOU ARE COMFORTABLE WHEN you can take a proactive role. Instead of remaining “the victim,” you choose to act. You find small ways in

which you are contributing to the problems and seek out those changes you could make to be less a “part of the problem” and become part of the solution. This is a wonderful start!

The more you observe, the more opportunities you will find to make a real difference with a few simple changes to your behavior and habits.

**/THINK ABOUT HOW YOU CAN FURTHER
LEVERAGE THOSE STRENGTHS AND
MANAGE SOME OF THE LIMITATIONS
WHICH MAY BE HOLDING YOU BACK:**

At the emotional level, your choices in the questionnaire indicate that you seek to remain rational and pragmatic, stepping into action rather than exploring feelings that may be associated with the challenges you see. This can be a useful coping strategy. Perhaps you sense that you would be overwhelmed by sadness, guilt, frustration, or other emotions while reflecting upon the magnitude of the problems that must be solved for a sustainable planet.

However this emotional distance might rob you of the experience of connecting with your heart, which you carry with you regardless! You may feel that you are guided more by “head” than “heart,” or that it is an effort to maintain “the wall” to avoid being hurt. Consider that often, letting go opens us up to new and unexpected experiences that profoundly enrich our soul.

**/THOUGHTS TO PONDER WHEN YOU
CONSIDER THE SM:**

Thinking of how we are personally contributing to the planetary challenges may not be something we do daily. Our demanding lives have many obligations and don’t leave much time for reflecting on this. We are busy getting things done!

Yet when analyzing the current un-sustainability of our planet, science has clearly established a link

between human behaviors in past decisions and the current problems we face. Much attention is now focused on how to repair the damage done, and how to restore damaged, depleted, or endangered resources. Scientists and entrepreneurs study how to minimize current or future problems at the environmental or social level, and how to innovate to avoid negative impacts into the future.

If we collectively influenced the place, we find ourselves in now (with all its problems), that means we also hold the key to influence where we will collectively be in the future – we: meaning humankind at large, or, from a closer perspective, our families, children, and grandchildren.



When we identify the ways in which we are unintentionally contributing to the problems, we have a chance to do something about them. It also expands our consciousness and develops social sensitivity.

/HOW ABOUT YOU TRY:

What if we all could develop the habit of asking ourselves periodically: *how am I contributing to this problem?* This question opens a path of inquiry, which automatically leads to expansion of our consciousness. We become more alert to take notice, and thus more open to try out new behaviors.

This same question, by the way, is also a powerful tool that can improve our relationships and interactions with others! So often we focus on what others are doing unto us, which leaves us powerless. When we learn to pay attention to what is our role in the problems we endure, we regain control and can actually do something.

Actively thinking about your contribution is definitely an important milestone in your personal development, with planetary implications. How might you connect more from the heart with others?



/SYSTEMS PERSPECTIVE

When analyzing information and making decisions a SYSTEMS
PERSPECTIVE has a major impact on the sustainability of our actions.

**/WHAT IS ASSESSED HERE:
HOW YOU THINK ABOUT THE LONG-TERM IMPACT WHEN ANALYZING AND MAKING DECISIONS, COMPLEMENTING SHORT-TERM THINKING; HOW YOU FEEL ABOUT IT, AND THE IMPACT ON YOUR BEHAVIORS.**



What this tells you:

This graph shows the two dimensions of cognitive and behavioral, meaning that you have an intellectual understanding of this aspect, and you also act upon it. We don't have enough data to report if or how you connect with your feelings related to this item.

YOUR SMI RESPONSES INDICATE THAT you have a good understanding of the long-term sustainability impacts that our decisions may have, even the simple and daily ones, not to mention behaviors commonly accepted in our society.

/YOU ARE COMFORTABLE thinking of "what ifs" and the long-term consequences of possible decisions before taking them. This may not always be welcome in a team setting, but from the perspective of shaping a sustainable world, this contribution is a great asset

to yourself and to your working groups. Your perspective will likely enrich actions, as they result from considering potential impacts in the longer term.

We cannot comment how you feel about this, since you indicated (by choosing "neither") that you did not feel represented by either of the available options.

/THINK ABOUT HOW YOU CAN FURTHER LEVERAGE THOSE STRENGTHS AND MANAGE SOME OF THE LIMITATIONS WHICH MAY BE HOLDING YOU BACK:

So how do you relate to others, who don't see it like you? Does it happen sometimes to you that you cannot understand why others passionately resist your long-term thinking?

If that is the case you might want to remember the emotional weight of uncertainty. You might feel a bit of anxiety or fear of the unknown yourself, if you would check on your feelings.

/THOUGHTS TO PONDER WHEN YOU CONSIDER THE SM:

There is a tacit pressure to act promptly and focus on that which needs immediate attention. This is very important, and there are many circumstances where this way of responding is the optimal, or even the only one that matters. A fire in the house, for example. We can sense the urgency and it is not a good idea to pause and reflect on the long-term implications of the fire. But for many daily decisions, the context is different, and yet we still prioritize short term thinking, often without even pondering any medium- or long-term impacts of what we are doing. The stream of life, our colleagues, perhaps everyone with whom we interact takes for granted that we "all" act this way.

On the other hand, with greater understanding of the social and environmental problems we are facing, it has become clear that the law of cause-and-effect is always at play, even if not immediately obvious. In other words, the consequences of our daily actions do have impacts - some over time, some just in a different geography, and many on both.

As with other aspects which are key for a sustainability mindset, it is not a question of choosing one over the other, but a matter of balancing both views and taking both time horizons into account.

This mental habit expands our consciousness, as we become more aware of the way we are impacting others and the world. Not thinking about this doesn't stop it from happening. Stretching our imagination to consider potential impacts across time helps us make better decisions, and play a more active role in shaping a better world.

This is something about which you seem to know quite a lot.

/HOW ABOUT YOU TRY:

Empathy and understanding go hand in hand, and smooth out our interactions. Is this something you remember when you are in a conversation? Or something you would like to keep in mind?



Every action has consequences that are not immediately visible. Considering the long-term when analyzing situations and making decisions has a positive impact on global sustainability.

**/WHAT IS ASSESSED HERE:
HOW YOU THINK ABOUT AND DEAL
WITH AMBIGUITY AND PARADOXES,
HOW YOU RECOGNIZE DIVERSITY,
FEEL ABOUT IT AND ACT TOWARDS
IT.**



What this tells you:

This graph shows only one dimension – cognitive - meaning that you have an intellectual understanding about this aspect. You are not necessarily engaging your feelings nor converting them into actions. You might use this information to explore your emotions related to this aspect of the sustainability mindset, and perhaps find ways to convert your understanding into actions.

YOUR SMI RESPONSES INDICATE THAT you know that it is important to listen to others’ perspectives, and to find solutions that can accommodate diverse needs, even compromising what is important to one or the other.

At the same time, you are a pragmatic person that likes clarity in life. You feel most comfortable with clear choices - black and white options - and find a sense of stability and reassurance in holding onto your values and your worldview.

/YOU ARE COMFORTABLE when faced with a new situation, you can rapidly frame it within what you have learned is “right” or “wrong.” This useful for avoiding gray areas, although you may miss understanding the complexities of a situation.

There may be a tension between your understanding of the importance of inclusion, and your behaviors prioritizing right/wrong distinctions. Your choices in the questionnaire indicate that you may feel a certain tension, as you realize that you may be perceived as not being very inclusive. The point is that your heart remains true to values you were taught and respect.

/THINK ABOUT HOW YOU CAN FURTHER LEVERAGE THOSE STRENGTHS AND MANAGE SOME OF THE LIMITATIONS WHICH MAY BE HOLDING YOU BACK:

Because much of the world is changing, you may feel compelled to be more understanding with others’ perspectives, but this doesn’t come easy to you, and you may feel frustrated or impatient.

Of course, you wish there would be a solution that might make everyone happy, one that accommodates diverse ways of seeing the economy, ecosystems, humans, and the planet, but you don’t think this may be realistic.

/HOW ABOUT YOU TRY:

Here is a question to consider: Can you think of an event or situation, however minor, where someone with a different opinion was able to step into your shoes? How did it make you feel? How did it impact your attitude and your behavior?

What if we could shape a world that makes room for different perspectives? Where you acknowledge others' points of view, and yours are also included by others? Since we cannot control what others think or do but do have control over our own way of thinking, there may be an interesting path worth exploring here.

/THOUGHTS TO PONDER WHEN YOU CONSIDER THE SM:

Many of our world's sustainability challenges originate in choices such as: "either the planet or the economy" and "either protect the wolves or the farmer." Yet, *either-or* choices can be misleading, and have us believe there are win-lose solutions that work. But do they really? If the cost is high, do they still work? When we find ourselves in a situation where we see it the right way, and others are wrong, what may we be missing that these others are seeing? How could we all benefit from having a fuller picture?

It seems that today, more than ever, we are collectively being confronted with paradoxes and ambiguity. Increased transparency and access to information from around the world makes us aware of very different ways of thinking, being and acting with which we may not agree or be comfortable. Challenging as this may be, there is a benefit to it: We are becoming aware of our own worldviews just by realizing that there are other ways of seeing and feeling. This is an evolutionary insight of great value, the foundation for more peaceful societies.

In a way, life is prompting us to expand our understanding and our scope of caring, which go hand in hand. When we understand something, we can begin caring.

This is the start of a better world for all.



Both+and thinking allows us to understand paradoxes and calls for creative solutions that are inclusive of all stakeholders.

**/WHAT IS ASSESSED HERE:
HOW YOU BALANCE YOUR CAPACITY
TO ANALYZE AND PLAN WITH THE
UNDERSTANDING OF NATURAL
CYCLES, AND MAKE THEM PART OF
YOUR MINDSET.**

YOUR SMI RESPONSES INDICATE THAT you are a person who is profoundly committed to actions, who enjoys the challenges life offers you, crafting plans and setting goals to measure your progress. This allows you to feel empowered and in control, which is a nice feeling, particularly as it avoids the stress of uncertainty.

/YOU ARE COMFORTABLE making plans and implementing them, and derive a sense of fulfillment and satisfaction when you achieve the goals you set for yourself. We cannot comment on how you think about this, since you indicated (by choosing "neither") that you did not find yourself represented by either of the available options.

**/THINK ABOUT HOW YOU CAN FURTHER
LEVERAGE THOSE STRENGTHS AND
MANAGE SOME OF THE LIMITATIONS
WHICH MAY BE HOLDING YOU BACK:**

While planning is a way to feel in control of situations, you also may have noticed that it is frequently challenged, since life - with its countless variables - is too complex to be managed.

Do you experience frustration at times when things don't work out as you planned, or expected? How do you react? Do you let go of your plans and observe

what the events are telling you, or do you use persistence and incremental efforts to stay on top of your planned course?

**/THOUGHTS TO PONDER WHEN YOU
CONSIDER THE SM:**

You may be wondering why planning is related to several key aspects for a sustainability mindset. The connection is not in the planning as an activity per se, but in the way we think and process information when we plan. Planning is about organizing and structuring in order to control outcomes. Planning is linear by definition -one step after the other - and it assumes cause-effect relationships. But what about multi-effects, multi-causes, and feedback loops?

Contrast this with the sustainability problems we are facing. To begin with, they are complex and multidimensional by their very nature. Many are the result of our linear thinking, for example we believe that we can pursue unlimited growth, yet depletion of natural resources shows us this is not possible.

Our reliance on the human mind can create a collective assumption that we are in control, but a "small" manifestation like Covid-19 arrives as a surprise to debunk the myth of our own superiority.

/HOW ABOUT YOU TRY:

Planning in itself is not the problem but rather, excessive reliance on carefully crafted steps. How do you incorporate the cycles of nature into your planning? As an example, do you accept phases of growth and decline - aging and impermanence, along with endings and mortality followed by new beginnings and birth? How do you incorporate humanity as part of Nature, rather than its controller? Many implications to think about, indeed.

Here are a few thoughts to ponder. Do you see yourself balanced in terms of making and letting go of plans? How do you balance structure and flow, organization and flexibility?

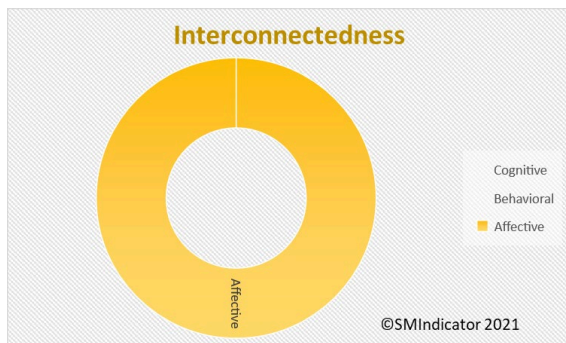
Relaxing your grip on plans may cause uncertainty, yet like swimming along with the river's current, it can also increase your speed, and reduce the stress of resisting obstacles. Worth a try.

There are no linear processes in Nature: Everything flows in cycles of birth, growth, death, and rebirth.

Many aspects of man-made unsustainability of the planet are a result of the misconception that we are not governed by this law of Nature.



/WHAT IS ASSESSED HERE: HOW YOU UNDERSTAND AND EXPERIENCE INTERCONNECTEDNESS, VERSUS VALUES LIKE AUTONOMY AND INDEPENDENCE.



What this tells you:

This graph shows only the affective dimension, meaning that your predominant tendency is to connect emotionally with this aspect, without necessarily engaging in related behaviors or fully comprehending it. You might want to try and expand your understanding and also explore how you might make a small difference every day.

YOUR SMI RESPONSES INDICATE THAT you believe independence and autonomy are very important aspects of human life, perhaps as a combination of a given right, a personal goal and a precious virtue to cultivate. They signify ownership and accountability to you.

You are comfortable when you can express this in your behaviors: you work well in contexts where you can compete and strive towards being your personal best.

Interestingly, your choices in the questionnaire also indicate that you are a person who is appreciative about other people's input and

support. It may be that a part of you adapts well to competing environments, but your heart would rather collaborate if that would be possible.

/THOUGHTS TO PONDER WHEN YOU CONSIDER THE SM:

You may not have given it much thought, but the polarities of independence vs. interconnectedness and competition vs. collaboration are of particular relevance when focusing on sustainability. To begin with, the environmental and social challenges are complex and multidimensional, making it impossible for any one person to solve on their own. It is only through collective thinking, action and the collaboration of multiple stakeholders that we will be able to develop alternatives. (This, by the way, makes sustainability a great opportunity for contributing personal skills to a larger cause).

While certain cultures have a collectivistic framework, most of the western-northern culture - widely exported and globalized - is individualistic and celebrates personal achievement. However, is this realistic and even feasible?

/THINK ABOUT HOW YOU CAN FURTHER LEVERAGE YOUR STRENGTHS AND MANAGE SOME OF THE LIMITATIONS WHICH MAY BE HOLDING YOU BACK:

Let's pause for a moment: Can you name one achievement that was purely and authentically your own without another person playing any role in it?

The combination of your answers seem to indicate that your perspectives are evolving and changing. This is very appropriate since there is an increasing need for collaborative teamwork, and you will

have an advantage adapting to those settings that already feel better for you now.

As you further develop your empathy and social sensitivity, you will become more conscious of the many ways in which we are interconnected, and the positive impact of paying attention to this in our everyday decisions. You will be able to share your new perspectives with others, and it may expand their thinking horizon.

/HOW ABOUT YOU TRY:

If you have identified an accomplishment that you consider authentically your merit, make a list of who may have played a role in it. Rank them, in order of relevance or impact on your success. What does this exercise tell you about the polarity of autonomy versus interconnectedness?

We invite you to explore what autonomy means for you. What are the roots of this value for you, perhaps in your upbringing or in your current context? Is this authentically a priority for you, or is it something automatically inherited, or adopted without giving it much thought?

*When we see interconnectedness,
we understand the importance of
diversity, and our decisions and
actions become more inclusive,
which contributes to the
sustainability of the whole.*





/EMOTIONAL INTELLIGENCE

Understanding ourselves through the anchors of our identity, the pace of our life, and how we consider our intuitive wisdom are key for a sustainability mindset.

**/WHAT IS ASSESSED HERE:
HOW YOU INCORPORATE NON-
RATIONAL INFORMATION, INTUITIVE
KNOWING, CREATIVITY AND
IMAGINATION IN ORDER TO
BALANCE RATIONAL THINKING, AND
HOW YOU FEEL ABOUT IT.**



What this tells you:

When the graph is well balanced, it means that you have a good understanding of the aspect of the Sustainability Mindset being assessed, that you are able to connect with your feelings about it, and that you tend to act upon what you know and feel. This is a good start, and you might want to think about circumstances or contexts in which you would like to act more, understand better or further explore your feelings.

YOUR SMI RESPONSES INDICATE THAT you have a clear understanding of the value of combining your logical and analytical thinking abilities with creative imagination.

You know that the human mind is capable of great accomplishments, as history has shown, when intuition and creative ideas are coupled with rational thinking and good strategies. You may even trust that

our sustainability problems could be addressed with a good balance of these abilities.

/YOU ARE COMFORTABLE WHEN reality presents you with plenty of unknowns. You actually enjoy it and find uncertainty exciting.

It seems that you often find yourself in situations where you make great contributions by putting your “creative hat” on, being playful by not preemptively censoring your ideas. You have a good tolerance of the uncertainty of not knowing how something can work out. You are able to live with a certain degree of risk-taking. What a valuable asset for these times!

**/THINK ABOUT HOW YOU CAN FURTHER
LEVERAGE YOUR STRENGTHS AND
MANAGE SOME OF THE LIMITATIONS
WHICH MAY BE HOLDING YOU BACK:**

Are you happy with how you listen to and consider your own intuition, this non-verbal wisdom? Is your imagination and creativity nurtured and well expressed, or do you think you could do more? What do you see as your next developmental frontiers in this aspect?

**/THOUGHTS TO PONDER WHEN YOU
CONSIDER THE SM:**

You know that the sustainability challenges we are facing are largely new, and as COVID-19 taught us, increasingly situations arise for which we don’t have previous experience or science on which to rely. We have become more aware of this complexity of our challenges, and we are skeptical of simplistic solutions.

However this also requires entry into uncharted territories. Resilience calls for flexibility in adapting to new situations, and this entails innovating and experimenting, as you indicate you sometimes do. Definitely having no clear blueprints to follow may be disturbing, yet there are no choices but to take some risks. And fortunately you can handle them.

It seems that you have a reservoir of imagination, even intuitive wisdom, available to tap into. This helps you complement your strategic thinking, and maximize your achievements. For the benefit of all.

/HOW ABOUT YOU TRY:

Our world is certainly giving preference to rational and logical thinking, so you have a much-needed perspective to contribute. In what new ways could you envision doing this?

Resilience is based on constant creativity, innovation, and experimentation. When we neglect the non-rational wisdom we have in us, our solutions are missing critical information, and may create negative impacts on the ecosystem and society.



**/WHAT IS ASSESSED HERE:
HOW YOU NOTICE YOUR OWN PACE,
AND HOW YOU BALANCE RAPID
RESPONSE WITH MAKING TIME TO
PONDER AND REFLECT BEFORE
ACTING. AND HOW THIS MAKES
YOU FEEL.**

/YOUR SMI CHOICES INDICATE THAT

you thrive on the adrenaline of urgency. You find multitasking very stimulating and are gifted with endurance. You enjoy the tension which brings out your best performance.

We cannot further comment on how those feelings relate to your thinking or behaviors, since you indicated (by choosing "neither") that you did not find yourself represented by either of the available options.

**/THINK ABOUT HOW YOU CAN
LEVERAGE YOUR STRENGTHS AND
MANAGE SOME OF THE
LIMITATIONS WHICH MAY BE
HOLDING YOU BACK:**

Questions for reflection: Does it ever happen that you wish you could relax, slow down and do nothing? Does your body, your mind or perhaps your soul call for less stress, or even a break? What message might be there for you, waiting to be heard?

**/THOUGHTS TO PONDER WHEN YOU
CONSIDER THE SM:**

Since we are looking at these aspects from the perspective of a sustainability mindset, let's pause and think about what behaviors might be most effective as well as much needed.

While there is a call for urgent action about climate change and the related social and environmental problems, many modern sustainability challenges are actually the result of overlooked potential impacts.

For decades, well-intended decisions were largely made by quickly identifying the best option. But today we are understanding better that problems are complex, that solutions impact a multiplicity of future stakeholders, and that there are always consequences. Of course, it is not possible to anticipate all scenarios, but pausing and checking assumptions as you do it can be very useful to avoid future problems.

For example, what can you learn to avoid or repeat from past experiences? Can you identify in hindsight, what was at stake? When we have more information we can better weigh alternatives.

All of this, however, is at odds with speed. We cannot both act fast and ponder carefully.

The question becomes: Is decisiveness and fast action coming at an expensive price for you and others, us, the next generations, and the ecosystem?

Food for thought!

/HOW ABOUT YOU TRY:

What message may be there for you, waiting to be heard and acted upon? And how can you more confidently share this different way of being and living with others?

Reflective practices help to pause, and to ponder the situation and its implications before jumping into action.



/WHAT IS ASSESSED HERE: HOW AWARE YOU ARE ABOUT THE ANCHORS OF YOUR IDENTITY AND YOUR VALUES; HOW YOU FEEL AND ACT IN CONSEQUENCE.



What this tells you:

This graph shows the two dimensions of cognitive and behavioral, meaning that you have an intellectual understanding of this aspect, and you also act upon it. We don't have enough data to report if or how you connect with your feelings related to this item.

YOUR SMI RESPONSES INDICATE THAT you believe the paradigm we have long been living with is due for a revision, because values like growth and progress may be linked to an assumption of unlimited resources, which may not be realistic.

You have been noticing that many of your automatic behaviors are actually not very environmentally friendly, or perhaps have some kind of negative social impact.

You are comfortable trying to make some changes, but this probably has been somewhat challenging and might not have left you very satisfied. We cannot comment on your feelings related to this topic since you indicated (by choosing "neither") that you did not find yourself represented by either of the available options.

/THINK ABOUT HOW YOU CAN LEVERAGE YOUR STRENGTHS AND MANAGE SOME OF THE LIMITATIONS WHICH MAY BE HOLDING YOU BACK:

Your understanding and actions are not mainstream, and thus very important to drive much needed change. Undoubtedly, there are social and environment related challenges everywhere. Some happen locally, others across borders. You understand science has been linking many of these issues to human behaviors, such as consumption of unhealthy foods, depletion of natural resources, pollution or contamination of air, soil and water. And we are left to deal with the consequences today, trapped in a paradigm that prioritizes values that have a negative impact, such as thoughtless consumption.

How happy are you with how you are sharing your valuable perspectives with others? Do you feel you are doing it as much as you could?

/THOUGHTS TO PONDER WHEN YOU CONSIDER THE SM:

Let's pause for a moment. This survey was designed around the Sustainability Mindset, which is a way of thinking and being, to optimally adapt to the moment in which we are living. This mindset focuses on using our natural gifts to shape a better

future, for ourselves and for all, the ecosystem included.

Research has proven that what may sound overwhelming, actually can be broken down into small, realistic ways to contribute to the greater good, and feel great at the same time. The first step is taking a fresh look at what surrounds us.

/HOW ABOUT YOU TRY:

Have you identified some of your activities that may not live up to your personal expectations of living in a 'sustainable' way? In what new ways could you make some changes? Sometimes we do not have the power to control a situation, but we always have unlimited power to influence, with our words, attitudes, talking or writing.

How about exploring a few of your unused possibilities?

Another suggestion is that you explore the roots of some values that are important for you, such as success, winning, and outperforming others. Where can you trace their origins? Perhaps in your upbringing, or in your current context? What do they represent for you, which makes them important? Are they authentically yours, or are they perhaps inherited, adopted without giving much thought to it?

When we explore our personal values, beliefs, assumptions, and motivations, we gain greater control over our actions, and we can see new alternative behaviors.

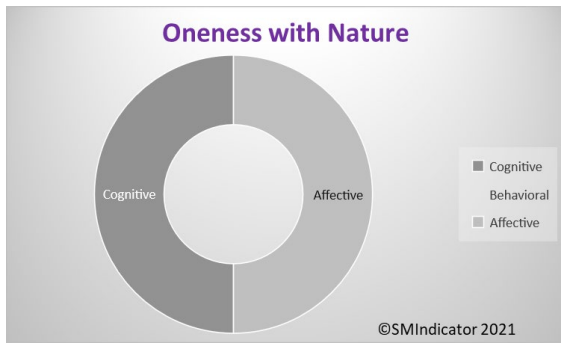




/SPIRITUAL INTELLIGENCE

The spiritual orientation to Nature, to ourselves and to others are key factors for a Sustainability Mindset, as they impact the quality of our actions.

**/WHAT IS ASSESSED HERE:
HOW YOU EXPERIENCE NATURE,
HOW YOU UNDERSTAND THE
HUMAN RELATIONSHIP WITH
NATURE, AND YOUR RELATED
FEELINGS AND BEHAVIORS.**



What this tells you:

This graph shows that your approach to the assessed topic is both cognitive and affective, but you are not necessarily translating what you know and feel into actions. You might use this information to explore new habits and daily changes for a sustainability purpose.

YOUR SMI RESPONSES INDICATE THAT you think of Nature as an experience that offers more wisdom than we can intellectually grasp. This understanding may be the result of some special moments, when you stood in awe admiring Nature, your heart perhaps filled with joy and some kind of wordless experience of beauty.

You see the limitations of pure rationality and realize that the intellectual capability is valuable for building scientific knowledge, but also frequently overstated. Our comprehension of the natural world, including

our bodies, has advanced over time, but in the history of science findings are always within the constraints of available instruments, paradigms, or assumptions. It is clear to you that over time, the development of more precise measurement techniques or revolutionary thinking has certainly revealed the myopic or biased conclusions of the past!

However, you are also comfortable acting with a utilitarian approach to natural resources, considering the rights granted by our belief in “human superiority”.

Without doubt, many scientific discoveries and improvements of our quality of life have shown the power of the human mind. Yet you may have also noticed that some betterments have come at a cost for the environment or society, and we are collectively paying that price, for example, soil erosion or waterway contamination from chemical crop fertilizers meant to enhance soil productivity.

The human-centric paradigm that we collectively adopted and believe has begun to show some shortcomings, inviting us to revisit our place and role in the larger ecosystem.

What are some undesirable consequences of human progress that you have personally experienced? What message may be in this for you?

/THINK ABOUT HOW YOU CAN LEVERAGE YOUR STRENGTHS AND MANAGE SOME OF THE LIMITATIONS WHICH MAY BE HOLDING YOU BACK:

The combination of your choices in this instrument seems to show a disconnect between what you believe and value, and your actions. You have been blessed with some powerful experiences of oneness with Nature that give you an empathic disposition, yet they don't seem to manifest in how you act. It

may be a way of blending into a context that rewards rational thinking and intellectual capabilities.

But is that who you really are?

/THOUGHTS TO PONDER WHEN YOU CONSIDER THE SM:

According to a 2018 United Nations study, over 55% of the world's population lives in urban areas, a proportion that is expected to increase to 68% by 2050. As a result, for many of us, the disconnection from Nature is rather “natural.”

Hectic life in large cities makes it difficult for us to remember that we are more than individuals moving through traffic and buildings. The common associations with the word “Nature” may be vacation time, a park, or a documentary. What about our food? Our body? The materials of every object we use?

We rely on and praise scientific progress, but history has demonstrated that scientific findings are always within the constraints of available instruments, paradigms, or assumptions and many myopic or biased conclusions have been revealed with the passage of time, the development of more precise measurement techniques and revolutionary thinking. Biomimicry, a discipline studying how Nature solves problems, has been highlighting the wisdom of billions of years of evolution, and suggesting that we may find more answers in Nature than through our human intellect.

In fact, indigenous people have demonstrated a more resilient lifestyle, based on an intuitive connection to Nature.

This disconnection from Nature leads to a utilitarian relationship: Nature is reduced to instrumental resources for human needs and wants, causing not only spiritual alienation, but is the root cause for many unsustainability behaviors. What impacts do you see from having a utilitarian relationship with Nature?

When we understand something, we start caring for it. Understanding that we are one with Nature, a species within species, is a profound experience that

can shape behaviors leading to a more harmonious relationship with the self, with each other and with all beings.

You seem to have experienced it: a sensorial, intuitive understanding. It is not something to be learned, but rather an experience that we allow to happen, and which makes us remember something we have always known but had forgotten.

/HOW ABOUT YOU TRY:

Sometimes we realize that our thinking, feeling, and acting are not aligned. When we notice it, we may feel discomfort and tension- something out of sync. A sustainability mindset is not just harmony with the ecosystem, but it starts within us.

Is there something you need to revise, to feel more authentically who you are? What part of you is still clinging to an old paradigm, and why might that be so?

Understanding that we are one with Nature, a species within species, is a powerful spiritual experience that can shape behaviors leading to a more harmonious relationship with each other and all beings.



**/WHAT IS ASSESSED HERE:
HOW YOU THINK ABOUT THE
MEANING, ROLE AND VALUE OF
MINDFULNESS AND ITS PRACTICE,
AND HOW YOU FEEL ABOUT IT.**



What this tells you:

This graph shows that your approach to the assessed topic is both cognitive and affective. We don't enough have data to report about your behaviors and whether or how your understanding and feelings are converted into actions.

YOUR SMI RESPONSES INDICATE THAT you have a clear understanding of the world we live in and the importance of mindfulness.

You realize that consumption is rewarded, linking “who we are” with “what we do, have, or own”. You see this materialistic pattern in society, with its consequences on how we have to keep busy doing things, seeking to make money to be able to belong, feel respected and valued. You realize the unfortunate impact that this implicit message has on our health and well-being. It’s like being

trapped in a race to pursue an elusive and short-lived happiness.

We cannot comment on how your thinking impacts your behaviors, since you indicated (by choosing “neither”) that you did not feel represented by either of the available options.

However you seem to experience the tension and stress that comes with the reality you are living. According to your choices in the questionnaire, you have discovered a way to pause and re-center, experiencing a positive impact on how you feel about yourself, and how you interact with others.

It is not clear what strategies you employ to regain your inner calm. Pausing and stepping away from our tasks clears our mind, and we can return with renewed energy. Is this something you remember to do when you need it? If not, how could you help yourself remember it more regularly, or just in time?

/THINK ABOUT HOW YOU CAN FURTHER LEVERAGE YOUR STRENGTHS AND MANAGE SOME OF THE LIMITATIONS WHICH MAY BE HOLDING YOU BACK:

Given what you notice about the “achievement race” that we live in, how does this align with your experience, and with your values? Does your reality reflect the priorities that are important for you? If not, what are some small changes you might make?

Studies show the physical and emotional consequences of a constant focus on doing, while overlooking the more profound dimensions of “being,” such as reflection, spiritual or religious practices. We all need time to recharge, and to connect with our deeper self.

It may be as simple as going for a walk, listening to your preferred music, dancing, practicing a sport, playing with children or your pet, gardening or creating art.

If these are some of the activities that help you unwind, you are on the right path already. They are called “contemplative practices” because they engage a different part of our brain, creating a ‘buffer zone’ that permits releasing tensions, and many times we end up seeing our challenges in a different light.

/THOUGHTS TO PONDER WHEN YOU CONSIDER THE SM:

From the perspective of a sustainability mindset, mindfulness is both a key practice and an amazing result. Research has shown a direct link between individuals that have some contemplative practices not just with their physical and psychological health, but also with the emergence of feelings of empathy and compassion.

This creates a disposition towards positive social and environmental actions, and the resulting satisfaction feeds a positive reinforcing loop. In other words, the better we feel about something we’ve done, the more we seek to repeat the experience.

When we access and display a more balanced version of ourselves, we convey an unspoken message to the people with whom we interact, not just by what we say or how we behave, but through our attitude and energy. This has a proven positive influence on others, as science has identified with the phenomenon of “emotional contagion.”

In other words, when we develop a sense of peace for ourselves, we are also radiating a gift of peace to the world.

You already know that.

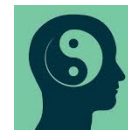
/HOW ABOUT YOU TRY:

What is mindfulness for you today: Is it a practice or a does it form a part of your lifestyle?

What would need to be true for you to take it to the next level, and what might that look like for you?

How easy is it for you to “catch yourself” in the moment when you are not fully present, not mindfully listening, or letting your emotional reactions control you, as opposed to your wiser self?

Mindfulness is being fully present, experiencing connectedness with all that is. Mindfulness enhances awareness and compassion, and predisposes to social and environmental actions.



**/WHAT IS ASSESSED HERE:
WHAT YOU THINK ABOUT HAVING A
PURPOSE IN LIFE, PARTICULARLY
SOMETHING THAT IS IN SERVICE TO
OTHERS; HOW THIS FITS YOUR
REALITY AND HOW YOU FEEL ABOUT
IT.**



What this tells you:

When the graph is well balanced, it means that you have a good understanding of the aspect of the Sustainability Mindset being assessed, that you are able to connect with your feelings about it, and that you tend to act upon what you know and feel. This is a good start, and you might want to think about circumstances or contexts in which you would like to act more, understand better or further explore your feelings.

YOUR SMI RESPONSES INDICATE THAT you think it is important to find a purpose in life, to identify something that, by making a difference, makes our life meaningful. You actually state that you may have found it, through actions that serve others.

It is possible that part of your obligations and responsibilities are to serve others, to attend to their needs or expectations. Your work, family, perhaps relationships, form part of your reality

and use up your available energy – and you perceive this as your service. Or you may have found a cause where you can contribute your unique skills and talents, for the greater good.

Your choices in the questionnaire indicate that it is not a good feeling for you not to have a meaningful life. And you wonder if we are on journey of seeking and finding answers to the question of “Why am I here?”

Indeed, for some the answer is clear and endures over time. For others, it changes and makes us seek renewed answers. When what you are doing no longer satisfies you, it is actually a great signal. The tension we feel indicates that something has already begun to shift, and we are on a path of further growth and transformation.

/THOUGHTS TO PONDER WHEN YOU CONSIDER THE SM:

The research regarding core aspects for a sustainability mindset identified the role of activities intentionally done for the “greater good.” The state of our planet is such that it requires each of us to step up and play an active role in shaping a better world.

The actions needed, whether large or small, share a similar result: they provide us with a feeling of joy, which then we want to replicate to feel good again, thus creating a reinforcing loop. Interestingly, we tend to think that we need to take care of ourselves first, before helping others, but the facts show that when we do small acts of kindness for others, we feel much better ourselves.

/HOW ABOUT YOU TRY:

With this in mind, what are some new experiments you can try? What are some different things for

the greater good that you already did, and perhaps could repeat, do regularly, or improve? Which of your natural gifts and skills could you put into service for the greater good, in a cause for which you have a passion?

Don't get intimidated by grandiose words like 'changing the world' or having a life mission or purpose. In fact, each small action of kindness has already an impact that we may never be able to imagine. That is also changing the world, one interaction at a time.

Defining our purpose provides an unconscious compass, and when it is grounded in values of our higher self, we actively shape a better world.



[Please click HERE](#)

and provide us with a brief (1 min) Feedback.

Thank you!

