



Sustainability
Mindset
Indicator®

**/REPORT
PREPARED FOR:
imdt2024-1
18/Oct/2024**

If for every dollar in minute that we invest in AI, we invest another dollar in developing our own consciousness, our own mind, we will be ok. Yuval Noah Harari

FOOD FOR THOUGHT.

How ready do you feel you are to deal with the complexity we are living in? How do you respond to the increasing polarization, to the need to expand our attention to stakeholders impacted by our daily decisions? How comfortable are you planning and yet letting go of your plans as you consider the feedback that reality is giving you? How easy is it for you to adapt, revisit your assumptions, unleash your creativity, and innovate?

These are some of the key indicators of resilience.

We find comfort in our plans, in the 'known and tried out' ways of doing things. Yet this may also be the obstacle that slows us down when we need to find new ways of acting that have a better impact on the world. While much is talked about the future that awaits us, it's easy to forget that it is *us*, each one of us, who is shaping this future with our daily decisions and actions. Yet, rushed as we all live in these demanding times, we may not take the moment to pause, observe where we are, what our most precious goals and values are, and how our day, today, is reflecting those values, leading us to those goals. And what course corrections we may want to do!

This is the Era of Purpose. How mindful are you of your larger purpose? Setting a purpose becomes the compass offering certainty in a world filled with uncertainty. Are you giving yourself the gift of a pause, to ask yourself what your larger, higher purpose could be?

You may recognize in these lines some aspects that were addressed in the statements offered to you in the Sustainability Mindset Indicator, as you were invited to reflect and choose which best represented you. This report constitutes a picture, a map of your personal journey towards a resilient, purposeful, creative mindset for flourishing as an individual, making a difference in the world. Which is sustainability at its best.

Let this report be a gift for your soul.

Welcome to your Personalized Report. This Report is based on your selections on the SMI. It is meant to be a personal development tool, to highlight aspects of your understanding, behaviors and feelings related to your Sustainability Mindset (SM).

You will find observations that you may identify with, others that you vaguely recognize, and others that perhaps don't resonate with you. Keep what you need and what makes sense to you.

You will also find questions to consider, suggestions for things you can try, and information related to the aspects covered in this report, and how these are related to the Sustainability Mindset.

Take your time reading your Report. Pause, take notes, and reflect. It is all about you, and for you. There were no wrong answers in the survey. Only good options and perhaps some that you hadn't thought of.

/WHAT YOU WILL FIND IN THE FOLLOWING PAGES

This Personalized Report is organized into several sections. The first section contains a graph, displaying how the different aspects assessed compare to each other, according to your choices in the survey. Those that occupy a larger area are your stronger ones and the narrower or missing ones are aspects of the Sustainability Mindset that are less developed or absent for you, as inferred from the combination of your answers.

The next section presents personalized descriptions of where you find yourself on your journey towards a Sustainability Mindset, in four clusters: Ecological Worldview, Systems Perspective, Emotional Intelligence, and Spiritual Intelligence.

Within each of these clusters you will find what aspects were assessed, and a graph for each aspect displaying how you connect to this topic, whether intellectually, through your actions and behaviors and/or by engaging your emotions.

If you see some areas missing within the graph, it means that either you selected “neither” for that question and therefore we don’t have information to report on, or your answers suggest you don’t engage in one or more areas (cognitive, behavioral, or affective). Similarly, if you selected “neither” for all the questions within one Sustainability Mindset Principle, we don’t include a graph, since we don’t have information to report on.

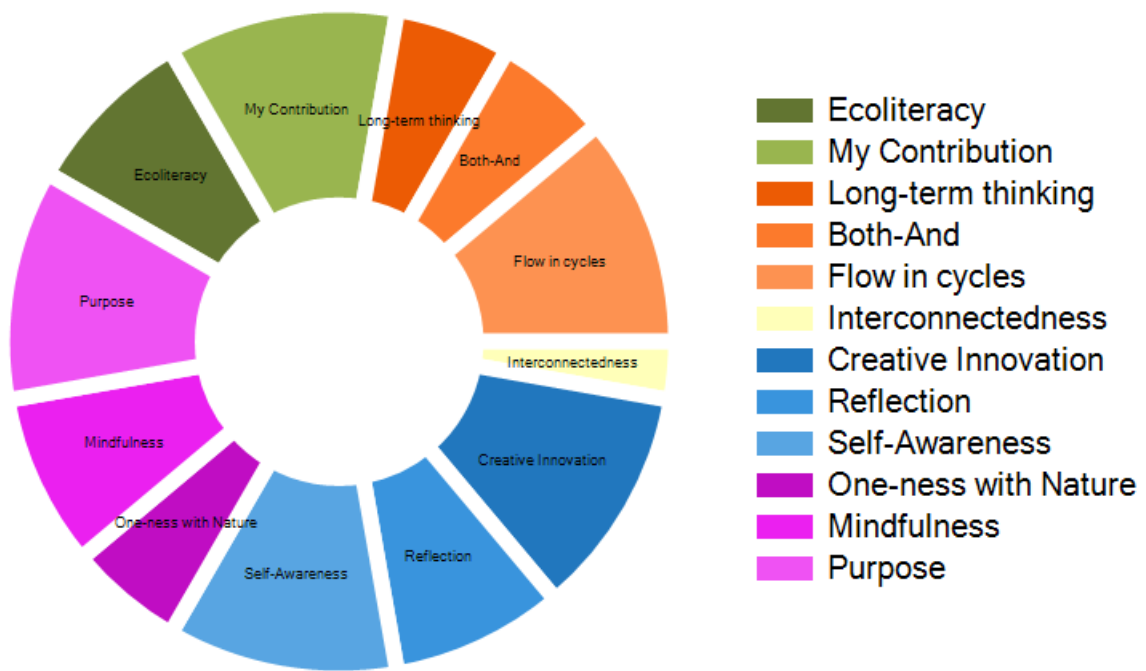
Each graph is accompanied by a box with a brief explanation, and you will find much more information in the text to include what your choices suggest, why this Principle is key for a sustainability mindset, and questions to ponder and suggestions to try.

Enjoy your journey into the realm of the Sustainability Mindset - a place where you can be your best, for yourself and for the World.

The SMI Team

**/ Your overall SUSTAINABILITY
MINDSET PROFILE**

The graph below shows your personal profile, indicating how – relatively to each other – you have developed your Sustainability Mindset. The wider sections indicate your stronger areas, and vice versa.





/ECOLOGICAL WORLDVIEW

An ECOLOGICAL WORLDVIEW is the result of having an intellectual and affective broad understanding of the planetary challenges, how they are interrelated, and how we are contributing to them.

**/WHAT IS ASSESSED HERE:
HOW YOU UNDERSTAND THE
ENVIRONMENTAL AND SOCIAL
CHALLENGES, AND HOW YOU FEEL
ABOUT IT, AND THE IMPACT ON
YOUR BEHAVIORS.**



What this tells you:

This graph shows that your approach to the assessed topic is both cognitive and affective, but you are not necessarily translating what you know and feel into actions. You might use this information to explore new habits and daily changes for a sustainability purpose.

YOUR SMI RESPONSES INDICATE THAT you have a good understanding of the complexity of the planetary challenges we are facing, and how they are interrelated.

You also seem to be socially sensitive and have empathy for the suffering of others. This may be creating some emotional stress, perhaps feelings of being overwhelmed by a reality that you think you cannot change.

But is it really so, that you cannot influence and make a difference?

**/THINK ABOUT HOW YOU CAN FURTHER
LEVERAGE THOSE STRENGTHS AND MANAGE
SOME OF THE LIMITATIONS WHICH MAY BE
HOLDING YOU BACK:**

You understand the scope of the sustainability challenges, from the environmental and social perspective; you notice linkages, relationships and connections. The other powerful path is in your emotions. Your social sensitivity is a special gift. Yet somehow, you are not connecting what you know and how you feel, with actions or behaviors that could contribute to greater sustainability.

You have an opportunity there to put your unique gifts and passions to use for the greater good. When we allow ourselves to connect from the heart with the reality of the news and find small ways to change our behavior, we are more present and don't need to live with our divided selves. This can be more fulfilling.

**/THOUGHTS TO PONDER WHEN YOU
CONSIDER THE SM:**

We are definitely living in a time of information overload. It is challenging to stay on top of all that is happening, while keeping up with our own obligations and activities. Furthermore, sustainability news tends to be on the negative side, creating doomsday scenarios and scary prophecies that can trigger anxiety, make us feel bad, sad, or worried.

Yet we tend to underestimate our own power and influence in shaping a better world. As a matter of fact, if the challenges we are currently experiencing are a product of past problematic behaviors, then we are also positively shaping the future of the planet with our current mindful decisions and restorative actions. That opens an interesting path.

/HOW ABOUT YOU TRY:

Here are some suggestions to ponder:

What are things you are good at that you aren't incorporating into your sustainability contributions? Who could benefit and where from your gifts and talents and possibly your passion? What do you see as your next frontier of development?



Understanding the state of the planet allows us to be more fully aware of the challenges, the complexity of how they are linked to each other, and to explore what it means to us.

**/WHAT IS ASSESSED HERE:
HOW YOU SEE THE RELATION
BETWEEN INDIVIDUAL DECISIONS
AND PLANETARY CHALLENGES, HOW
YOU FEEL ABOUT IT AND THE
IMPACT ON YOUR PERSONAL
BEHAVIORS.**



What this tells you:

When the graph is well balanced, it means that you have a good understanding of the aspect of the Sustainability Mindset being assessed, that you can connect with your feelings about it, and that you tend to act upon what you know and feel. This is a good start, and you might want to think about circumstances or contexts in which you would like to act more, understand better or further explore your feelings.

YOUR SMI RESPONSES INDICATE THAT you periodically ponder if you are personally playing a role in the world's social or environmental problems of the world. Certainly, you didn't create the problems intentionally, but you seem to pause and wonder in what ways you may be contributing to them.

/THINK ABOUT HOW YOU CAN FURTHER LEVERAGE THOSE STRENGTHS AND MANAGE SOME OF THE LIMITATIONS WHICH MAY BE HOLDING YOU BACK:

Because you are a very sensitive person, with an open heart, realizing that you are part of the problem may bring up feelings of guilt, sadness, despair, or anxiety.

Yet are you aware that your ability to connect truthfully to your own emotions is actually a valuable skill that is much needed in the world? Your sensitivity also helps you to feel for others, with empathy and compassion for their suffering. This is a precious quality, although at times it can be difficult to live with it.

/YOU ARE COMFORTABLE WHEN you find a way to convert the emotional energy into action, by taking a proactive role. Instead of remaining "the victim," you choose to act. You find small ways in which you are contributing to the problems and seek out those changes you could make to be less a "part of the problem" and become part of the solution. This is a wonderful start!

The more you observe, the more opportunities you will find to make a real difference with a few simple changes to your behavior and habits.

/THOUGHTS TO PONDER WHEN YOU CONSIDER THE SM:

Thinking of how we are personally contributing to the planetary challenges may not be something we do daily. Our demanding lives have many obligations and don't leave much time for reflecting on this. We are busy getting things done! Yet when analyzing the current un-sustainability of our planet, science has clearly established a link between human behaviors in past decisions and the current problems we face.

Much attention is now focused on how to repair the damage done, and how to restore endangered or depleted resources. Scientists and entrepreneurs study how to minimize current or future problems at the environmental or social level, and how to innovate to avoid negative impacts into the future.

If we collectively influenced the place, we find ourselves in now (with all its problems), that means we also hold the key to influence where we will collectively be in the future – we: meaning humankind at large, or, from a closer perspective, our families, children, and grandchildren.



When we identify the ways in which we are unintentionally contributing to the problems, we have a chance to do something about them. It also expands our consciousness and develops social sensitivity.

/HOW ABOUT YOU TRY:

What do you see as your next developmental frontier? Consider how to make a more frequent habit of asking yourself “How am I contributing to this?” This question opens a path of inquiry, which automatically leads to expansion of your consciousness. You become more alert to take notice, and thus more open to try out new behaviors.

This same question, by the way, is also a powerful tool that can improve our relationships and interactions with others! So often we focus on what others are doing unto us, which leaves us powerless. When we learn to pay attention to what is our role in the problems we endure, we regain control and can actually do something.

Actively thinking about your contribution is definitely an important milestone in your personal development, with planetary implications.

Other possibilities to ponder: To be more creative in your actions, perhaps use more of your unique talents to make a difference.

How might you connect more from the heart with others?

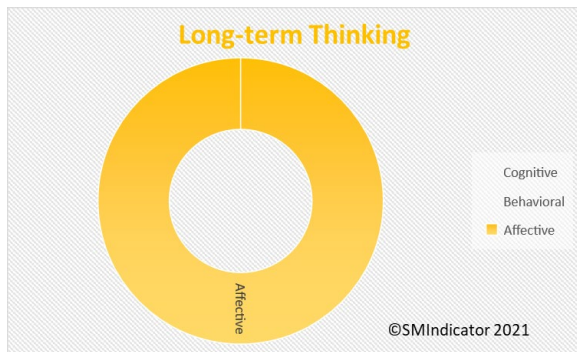
Food for thought!



/SYSTEMS PERSPECTIVE

When analyzing information and making decisions a SYSTEMS
PERSPECTIVE has a major impact on the sustainability of our actions.

**/WHAT IS ASSESSED HERE:
HOW YOU THINK ABOUT THE LONG-TERM IMPACT WHEN ANALYZING AND MAKING DECISIONS, COMPLEMENTING SHORT-TERM THINKING; HOW YOU FEEL ABOUT IT, AND THE IMPACT ON YOUR BEHAVIORS.**



What this tells you:

This graph shows only the affective dimension, meaning that your predominant tendency is to connect emotionally with this aspect, without necessarily engaging in related behaviors or fully comprehending it. You might want to try and expand your understanding and also explore how you might make a small difference every day.

YOUR SMI RESPONSES INDICATE THAT you are a sensitive person who seems to worry about the long-term impact that your decisions or lifestyle may be having on the planet. It is difficult to live with this feeling!

In addition, the world around you tends to live more in the moment, focusing on the tangible and the short term and acting as if there were no such thing as a long-term impact. You are aware of this, and thus you seek to extract from the problem quickly.

/YOU ARE COMFORTABLE letting your pragmatic side take over when solving a problem, and you focus on the short term because it seems more concrete and functional. It saves time (or so it seems).

You are a good problem solver – looking for quick and efficient ways to address a situation. Acting promptly is important for you, and it provides you and others with a sense of control and direction.

/THINK ABOUT HOW YOU CAN FURTHER LEVERAGE YOUR STRENGTHS AND MANAGE SOME OF THE LIMITATIONS WHICH MAY BE HOLDING YOU BACK:

That said, this same decisiveness may impede the consideration of long-term impacts of the solution proposed, which could mean sustainability issues in the future. Much of the unsustainability problems originate in the focus on the short term when making decisions!

For example, what might be some long-term consequences on sustainability of a purchasing decision you recently made? What would your latest decision look like if you would have considered those potential long-term impacts?

/THOUGHTS TO PONDER WHEN YOU CONSIDER THE SM:

There is a tacit pressure to act promptly and focus on that which needs immediate attention. This is very important, and there are many circumstances where this way of responding is the optimal, or even the only one that matters. A fire in the house, for example. We can sense the urgency and it is not a good idea to pause and reflect on the long-term implications of the fire.

But for many daily decisions, the context is different, and yet we still prioritize short term thinking, often without even pondering any medium- or long-term

impacts of what we are doing. The stream of life, our colleagues, perhaps everyone with whom we interact takes for granted that we “all” act this way.

On the other hand, with greater understanding of the social and environmental problems we are facing, it has become clear that the law of cause-and-effect is always at play, even if not immediately obvious. In other words, the consequences of our daily actions do have impacts - some over time, some just in a different geography, and many on both.

As with other aspects which are key for a sustainability mindset, it is not a question of choosing one over the other, but a matter of balancing both views and taking both time horizons into account.

/HOW ABOUT YOU TRY:

This mental habit expands our consciousness, as we become more aware of the way we are impacting others and the world. Not thinking about this doesn't stop it from happening. Stretching our imagination to consider potential impacts across time helps us make better decisions, and play a more active role in shaping a better world.

It takes practice to develop new mental habits, but they too, can have long term impacts – for the better. It is thanks to people with your level of sensitivity that changes happen in the world. What will you do?



Every action has consequences that are not immediately visible. Considering the long-term when analyzing situations and making decisions has a positive impact on global sustainability.

**/WHAT IS ASSESSED HERE:
HOW YOU THINK ABOUT AND DEAL
WITH AMBIGUITY AND PARADOXES,
HOW YOU RECOGNIZE DIVERSITY,
FEEL ABOUT IT AND ACT TOWARDS
IT.**



What this tells you:

This graph shows only the affective dimension, meaning that your predominant tendency is to connect emotionally with this aspect, without necessarily engaging in related behaviors or fully comprehending it. You might want to try and expand your understanding and explore how you might make a small difference every day.

YOUR SMI RESPONSES INDICATE THAT you are an empathetic person, and it comes easily to put yourself in another person's shoes, trying to see life from their point of view, as puzzling as it might be.

It makes you feel good when you do so - in a way you feel closer to the other. Moreover, not being inclusive may make you feel guilty, selfish, righteous, or irresponsible. This is your internal compass.

At the same time, you are a pragmatic person that likes clarity in life. **You feel most comfortable with clear choices** - black and white options - and find a sense of stability and reassurance in holding onto your values and your worldview. When faced with a new situation, you seek to rapidly frame it within what you have learned is "right" or "wrong."

You are also aware that when one starts to be inclusive of other people's perspectives, we may lose sight of what we hold true and right, thus not fully honoring the responsibility we feel to champion these values.

**/THINK ABOUT HOW YOU CAN
FURTHER LEVERAGE YOUR
STRENGTHS AND MANAGE SOME
OF THE LIMITATIONS WHICH MAY
BE HOLDING YOU BACK:**

The combination of your natural empathy towards others, and your desire to have clear distinctions of what is right and wrong doesn't make your life easy! Simplifying complexity is helpful for avoiding gray areas, but you sense that you also miss understanding the complexities of the situation.

Here is a question to consider: Can you think of an event or situation, however minor, where someone with a different opinion was able to step into your shoes? How did it make you feel? How did it impact your attitude and your behavior? What if we could shape a world that makes room for different perspectives, where people acknowledge others' points of view?

In a way, you are already feeling empathy for others, which is a valuable asset in these polarized times. How could you convert your empathy into inclusive behaviors?

Since we cannot control what others think or do but do have control over our own way of thinking,

there may be an interesting path worth exploring here. Your behavior could role model appreciation of diversity. Are you aware of it? You could inspire others to feel empathy.

/HOW ABOUT YOU TRY:

You are a naturally caring person. Now, in what areas does empathy and inclusion come easier to you, and which situations are more challenging? This is your work.

You can start practicing with little day-to day opportunities to put your empathy into action, in new ways. Any thoughts?

/THOUGHTS TO PONDER WHEN YOU CONSIDER THE SM:

Many of our world's sustainability challenges originate in choices such as: "either the planet or the economy" and "either protect the wolves or the farmer." Yet, *either-or* choices can be misleading, and have us believe there are win-lose solutions that work.

But do they really? If the cost is high, do they still work? It is reassuring to find ourselves in a situation where we see it the right way, and others are wrong. But at the same time, you sense that we may be missing what these others are seeing, that we don't. How could we all benefit from having a fuller picture?

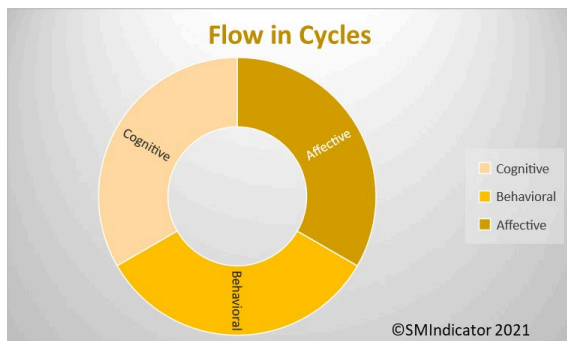
It seems that today, more than ever, we are collectively being confronted with paradoxes and ambiguity. Increased transparency and access to information from around the world makes us aware of very different ways of thinking, being and acting with which we may not agree or be comfortable. Challenging as this may be, there is a benefit to it: We are becoming aware of our own worldviews just by realizing that there are other ways of seeing and feeling. This is an evolutionary insight of great value, the foundation for more peaceful societies.

Life is prompting us to expand our understanding and our scope of caring, which go hand in hand. When we understand something, we can begin caring. This is the start of a better world for all.



Both+and thinking allows us to understand paradoxes and calls for creative solutions that are inclusive of all stakeholders.

/WHAT IS ASSESSED HERE: HOW YOU BALANCE YOUR CAPACITY TO ANALYZE AND PLAN WITH THE UNDERSTANDING OF NATURAL CYCLES, AND MAKE THEM PART OF YOUR MINDSET.



What this tells you:

When the graph is well balanced, it means that you have a good understanding of the aspect of the Sustainability Mindset being assessed, that you are able to connect with your feelings about it, and that you tend to act upon what you know and feel. This is a good start, and you might want to think about circumstances or contexts in which you would like to act more, understand better or further explore your feelings.

YOUR SMI RESPONSES INDICATE THAT you are aware of the commonly shared belief that humans are the most intelligent species, the apex of creation, with the intellectual ability to control Nature. And you have come to realize this assumption is most frequently contradicted by reality, particularly when we think in a linear way, acting outside the cycles of Nature.

According to this understanding, **you are comfortable** reminding yourself to take plans lightly, and listening to the feedback life gives you. You try to act in alignment with the cyclical flow of

Nature, which means that you accept that things grow, but not forever because there is also decline and death.

In our day-to-day this may mean accepting ageing and mortality, endings of relationships or certain phases in our life, and new beginnings as well. In another context, it may mean that you see humanity as part of Nature, not as its controller-in-charge.

This is a valuable attitude, because it can make your life easier. Like swimming along with the river's current, it increases your speed, and reduces the stress of resisting obstacles.

You sense that planning may just be a way to feel in control of situations, since life – with its countless variables - is too complex to be managed. Certainly we cannot live without plans and goals, but it may be the same frustration when things don't work out as you or others plan or expect, that reminds you: Shouldn't we let go of plans and observe what the events are telling us?

That thought alone seems to bring you a welcome sense of peace.

/THOUGHTS TO PONDER WHEN YOU CONSIDER THE SM:

You may be wondering why planning is related to several key aspects for a sustainability mindset. The connection is not in the planning as an activity per se, but in the way we think and process information when we plan. Planning is about organizing and structuring in order to control outcomes. Planning is linear by definition -one step after the other - and it assumes cause-effect relationships. But what about multi-effects, multi-causes, and feedback loops?

Contrast this with the sustainability problems we are facing. To begin with, they are complex and

multidimensional by their very nature. Many are the result of our linear thinking, for example we believe that we can pursue unlimited growth, yet depletion of natural resources shows us this is not possible.

Our reliance on the human mind can create a collective assumption that we are in control, but a “small” manifestation like Covid-19 arrives as a surprise to debunk the myth of our own superiority.

Planning in itself is not the problem but rather, excessive reliance on carefully crafted steps, and forgetting the natural cycles of growth and decline.

/THINK ABOUT HOW YOU CAN FURTHER LEVERAGE YOUR STRENGTHS AND MANAGE SOME OF THE LIMITATIONS WHICH MAY BE HOLDING YOU BACK:

How do you incorporate the cycles of Nature into your planning? As an example, do you regularly accept phases of growth and decline - aging and impermanence, along with endings and mortality followed by new beginnings and birth?

How do you incorporate humanity as part of Nature, rather than its controller, in your decisions and actions?

/HOW ABOUT YOU TRY:

Given the fact that this is not mainstream thinking, how do you communicate your perspective? You have a valuable opportunity to show alternatives that can lead us to more sustainable actions.

What do you see as your next personal development challenges in this aspect?

There are no linear processes in Nature: Everything flows in cycles of birth, growth, death, and rebirth. Many aspects of man-made unsustainability of the planet are a result of the misconception that we are not governed by this law of Nature.



/WHAT IS ASSESSED HERE: HOW YOU UNDERSTAND AND EXPERIENCE INTERCONNECTEDNESS, VERSUS VALUES LIKE AUTONOMY AND INDEPENDENCE.



What this tells you:

This graph shows only one dimension – behavioral - meaning that you are action- oriented, without much engagement of your feelings and without necessarily thinking about this aspect intellectually. You might use this information to seek ways to expand your understanding and explore your emotions.

YOUR SMI RESPONSES INDICATE THAT you believe independence and autonomy are very important aspects of human life, perhaps as a combination of a given right, a personal goal and a precious virtue to cultivate. They signify ownership and accountability to you.

Additionally, you enjoy the adrenaline of the challenges that motivate you. The excitement of seeking to be successful, to win or to outperform others is a pleasant feeling for you.

Recognition may be a reward, but it is not always external: it can also be for your personal satisfaction and sense of accomplishment. You feel

proud of your achievements and perceive them as a validation of your autonomy and personal capabilities in action. It is important for you to be self-sufficient as much as possible.

Interestingly though, your choices in this questionnaire indicate that, in your actions, you actually see yourself as part of a larger whole, which may mean that you pay attention to the impact of your behaviors on others. This may create a certain tension, for example when you want to make progress on something, yet you also have to consult with others, for example stakeholders. How do you handle this tension?

/THINK ABOUT HOW YOU CAN FURTHER LEVERAGE YOUR STRENGTHS AND MANAGE SOME OF THE LIMITATIONS WHICH MAY BE HOLDING YOU BACK:

This combination of aspects may come at a price. It is not always possible to live up to other people's expectations, not to mention our own, which often are even higher. Furthermore, in many settings where teamwork or collaboration is expected, it may be challenging to balance your individual performance with the collective contributions, and your personal efforts, gifts or skills may go unrecognized, or possibly even unappreciated.

/THOUGHTS TO PONDER WHEN YOU CONSIDER THE SM:

You may not have given it much thought, but the polarities of independence vs. interconnectedness and competition vs. collaboration are of particular relevance when focusing on sustainability. To begin with, the environmental and social challenges are complex and multidimensional, making it impossible for any one person to solve on their own. It is only through collective thinking, action and the collaboration of multiple

stakeholders that we will be able to develop alternatives. (This, by the way, makes sustainability a great opportunity for contributing personal skills to a larger cause).

While certain cultures have a collectivistic framework, most of the western-northern culture - widely exported and globalized - is individualistic and celebrates personal achievement. However, is this realistic and even feasible?

/HOW ABOUT YOU TRY:

Let's pause for a moment: Can you name one achievement that was purely and authentically your own without another person playing any role in it?

We invite you to explore what success and autonomy mean for you. What are the roots of these values for you, perhaps in your upbringing or in your current context? Are they authentically a priority for you, or are they something automatically inherited, or adopted without giving it much thought?

When we see interconnectedness, we understand the importance of diversity, and our decisions and actions become more inclusive, which contributes to the sustainability of the whole.





/EMOTIONAL INTELLIGENCE

Understanding ourselves through the anchors of our identity, the pace of our life, and how we consider our intuitive wisdom are key for a sustainability mindset.

**/WHAT IS ASSESSED HERE:
HOW YOU INCORPORATE NON-
RATIONAL INFORMATION, INTUITIVE
KNOWING, CREATIVITY AND
IMAGINATION IN ORDER TO
BALANCE RATIONAL THINKING, AND
HOW YOU FEEL ABOUT IT.**



What this tells you:

When the graph is well balanced, it means that you have a good understanding of the aspect of the Sustainability Mindset being assessed, that you are able to connect with your feelings about it, and that you tend to act upon what you know and feel. This is a good start, and you might want to think about circumstances or contexts in which you would like to act more, understand better or further explore your feelings.

YOUR SMI RESPONSES INDICATE THAT you have a clear understanding of the value of combining your logical and analytical thinking abilities with creative imagination.

You know that the human mind is capable of great accomplishments, as history has shown, when intuition and creative ideas are coupled with rational thinking and good strategies. You may even trust that

our sustainability problems could be addressed with a good balance of these abilities.

/YOU ARE COMFORTABLE WHEN reality presents you with plenty of unknowns. You actually enjoy it and find uncertainty exciting.

It seems that you often find yourself in situations where you make great contributions by putting your “creative hat” on, being playful by not preemptively censoring your ideas. You have a good tolerance of the uncertainty of not knowing how something can work out. You are able to live with a certain degree of risk-taking. What a valuable asset for these times!

**/THINK ABOUT HOW YOU CAN FURTHER
LEVERAGE YOUR STRENGTHS AND
MANAGE SOME OF THE LIMITATIONS
WHICH MAY BE HOLDING YOU BACK:**

Are you happy with how you listen to and consider your own intuition, this non-verbal wisdom? Is your imagination and creativity nurtured and well expressed, or do you think you could do more? What do you see as your next developmental frontiers in this aspect?

**/THOUGHTS TO PONDER WHEN YOU
CONSIDER THE SM:**

You know that the sustainability challenges we are facing are largely new, and as COVID-19 taught us, increasingly situations arise for which we don’t have previous experience or science on which to rely. We have become more aware of this complexity of our challenges, and we are skeptical of simplistic solutions.

However this also requires entry into uncharted territories. Resilience calls for flexibility in adapting to new situations, and this entails innovating and experimenting, as you indicate you sometimes do. Definitely having no clear blueprints to follow may be disturbing, yet there are no choices but to take some risks. And fortunately you can handle them.

It seems that you have a reservoir of imagination, even intuitive wisdom, available to tap into. This helps you complement your strategic thinking, and maximize your achievements. For the benefit of all.

/HOW ABOUT YOU TRY:

Our world is certainly giving preference to rational and logical thinking, so you have a much-needed perspective to contribute. In what new ways could you envision doing this?

Resilience is based on constant creativity, innovation, and experimentation. When we neglect the non-rational wisdom we have in us, our solutions are missing critical information, and may create negative impacts on the ecosystem and society.



/WHAT IS ASSESSED HERE: HOW YOU NOTICE YOUR OWN PACE, AND HOW YOU BALANCE RAPID RESPONSE WITH MAKING TIME TO PONDER AND REFLECT BEFORE ACTING. AND HOW THIS MAKES YOU FEEL.



What this tells you:

This graph shows that your approach to the assessed topic is both cognitive and affective, but you are not necessarily translating what you know and feel into actions. You might use this information to explore new habits and daily changes for a sustainability purpose.

YOUR SMI RESPONSES INDICATE THAT you have a sense that we are collectively trapped in an accelerated pace. Perhaps you notice your own speed, or see it in others.

The fact is that you observe and seem to think about this phenomenon, and may be asking yourself about the cost of this upon you or others. How is it possible to contemplate the future implications of decisions taken under the pressure of speed?

Furthermore, it seems that your very nature seeks a slower pace of life. It makes you feel better, more relaxed or lowers your stress levels.

And yet, your choices in the instrument indicate that this understanding and intuition may not be aligned with your behaviors.

You are comfortable acting fast because you are capable of making quick assessments of a situation. You are a quick thinker, and while you may overlook details, you consider that your decisiveness is needed to stimulate those that are more hesitant. Speed is justified.

/THINK ABOUT HOW YOU CAN FURTHER LEVERAGE YOUR STRENGTHS AND MANAGE SOME OF THE LIMITATIONS WHICH MAY BE HOLDING YOU BACK:

Have you ever asked yourself: Who is setting the expectation of acting fast? How do you balance your understanding of the need to carefully consider a situation, with this pressure to act with urgency? It is difficult to imagine that you could do this without some stressful tension.

/THOUGHTS TO PONDER WHEN YOU CONSIDER THE SM:

Since we are looking at these aspects from the perspective of a sustainability mindset, let's pause and think about what behaviors might be most effective as well as much needed.

While there is a call for urgent action about climate change and the related social and environmental problems, many modern sustainability challenges are actually the result of overlooked prior potential impacts. For decades, well-intended decisions were largely made by quickly identifying the best option.

But today we are understanding better that problems are complex, that solutions impact a multiplicity of future stakeholders, and that there are always consequences.

Of course, it is not possible to anticipate all scenarios, but pausing and checking assumptions can be very useful to avoid future problems.

Reflective practices help to pause, and to ponder the situation and its implications before jumping into action.

/HOW ABOUT YOU TRY:

For example, what can you learn to avoid or repeat from past experiences? Can you identify, in hindsight, something that was at stake and overlooked because you were trying to act fast?

When we have more information we can better weigh alternatives. All of this, however, is at odds with speed. We cannot both act fast and ponder carefully!

What might be new ways of combining urgently needed actions with careful exploration of their impacts? *What role could you see there for you?* Do you think you could be more vocal and perhaps find more courage to offer a perspective that certainly is not mainstream?

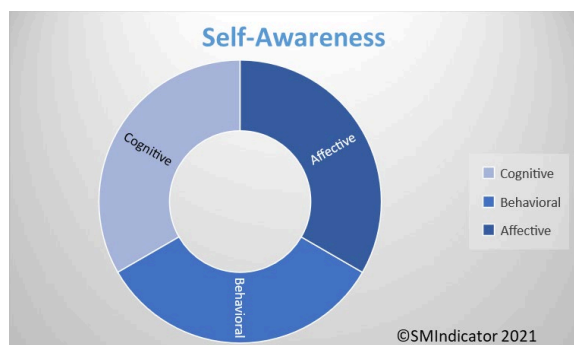
According to your answers, you seem to be gifted with an intuition that something is not quite right. Does it ever happen to you that you wish you could relax more, slow down and do nothing? Does your body, your mind or perhaps your soul call for a break, less stress? What message may be there for you, waiting to be heard and acted upon?

And how can you more confidently share this different way of being and living with others?

A lot of food for thought!



/WHAT IS ASSESSED HERE: HOW AWARE YOU ARE ABOUT THE ANCHORS OF YOUR IDENTITY AND YOUR VALUES; HOW YOU FEEL AND ACT IN CONSEQUENCE.



What this tells you:

When the graph is well balanced, it means that you have a good understanding of the aspect of the Sustainability Mindset being assessed, that you can connect with your feelings about it, and that you tend to act upon what you know and feel. This is a good start, and you might want to think about circumstances or contexts in which you would like to act more, understand better or further explore your feelings.

YOUR SMI RESPONSES INDICATE THAT you believe the paradigm we have long been living with is due for a revision, because values like growth and progress may be linked to an assumption of unlimited resources, which may not be realistic.

You have been noticing that many of your daily automatic behaviors are actually not very environmentally friendly, or perhaps have some kind of negative social impact.

You are comfortable trying to make some changes, which probably wasn't easy. That didn't stop you from seeking new alternatives, new ways of lowering your ecological footprint, or even to make this planet a better place.

/ THINK ABOUT HOW YOU CAN FURTHER LEVERAGE THOSE STRENGTHS AND MANAGE SOME OF THE LIMITATIONS WHICH MAY BE HOLDING YOU BACK:

The changes are painfully slow or seem minimal to you compared to the size of the challenge. That creates some unpleasant feelings of misalignment, between what you do and how you would like to see yourself. You experience tension, as you scrutinize your image of self.

You may have been taught certain values, like being a winner, not being a loser, always remaining rational, having more to be more. And you became these values. But then something began to shift, and these values don't feel entirely OK any longer. This may make you feel confused, perhaps a bit guilty at times. You may even feel more grateful or indebted to others for their help in your achievements than stubbornly proud of being a self-made person. These are not easy times for you.

However, you are on a journey of consciousness development. Change starts with us noticing some discomfort about something, and we want to do something to feel better (or less bad). In this case, you seem to have taken several steps. Of course it can be overwhelming to think of the complex problems, but many times we underestimate the power of small changes.

Your understanding and intuition are not mainstream, and thus very important to drive much needed change. How happy are you with how you are sharing your valuable perspectives

with others? Do you feel you are doing it as much as you can?

/THOUGHTS TO PONDER WHEN YOU CONSIDER THE SM:

Let's pause for a moment.

This survey was designed around the Sustainability Mindset, which is a way of thinking and being, to optimally adapt to the moment in which we are living. This Mindset focuses on using our natural gifts to shape a better future, for ourselves and for all, the ecosystem included.

Research has proven that what may sound overwhelming, actually can be broken down into small, realistic ways to contribute to the greater good, and, as you well know, feel great at the same time. The first step is taking a fresh look at what surrounds us.

Undoubtedly, there are social and environmentally related challenges everywhere. Some happen locally, others across borders. Science has been linking many of these issues to human behaviors, such as consumption of unhealthy foods, depletion of natural resources, pollution or contamination of air, soil, and water. And we are left to deal with the consequences today, trapped in a paradigm that prioritizes values that have a negative impact, such as thoughtless consumption.

But at the same time, it's worth remembering that our habits today are still (unintentionally) contributing to more of these problems in the future. And vice versa: Small changes in a habit today can do their part to shape a better future.

/HOW ABOUT YOU TRY:

Have you identified some of your activities that may not live up to your personal expectations of living in a 'sustainable' way? In what new ways could you make some changes? Sometimes we do not have the power to control a situation, but we always have unlimited power to influence, with our words, attitudes, talking or writing.

How about exploring a few of your unused possibilities?

You don't know what you can do until you try. You may encounter some cynicism, but your actions will speak louder than your words, as it always happens. Worth trying, right?

When we explore our personal values, beliefs, assumptions, and motivations, we gain greater control over our actions, and we can see new alternative behaviors.





/SPIRITUAL INTELLIGENCE

The spiritual orientation to Nature, to ourselves and to others are key factors for a Sustainability Mindset, as they impact the quality of our actions.

**/WHAT IS ASSESSED HERE:
HOW YOU EXPERIENCE NATURE,
HOW YOU UNDERSTAND THE
HUMAN RELATIONSHIP WITH
NATURE, AND YOUR RELATED
FEELINGS AND BEHAVIORS.**



What this tells you:

This graph shows the affective dimension, meaning that you connect emotionally with this aspect. We don't have data to report if or how these feelings relate to your understanding and behaviors.

YOUR SMI RESPONSES INDICATE THAT you have experienced some special moments, when you stood in awe, admiring nature, your heart perhaps filled with joy and a wordless experience of beauty.

What memories did that moment leave you with? Do you long to replicate, repeat or experience this again? Does something hold you back?

We cannot comment on how that experience and the feelings related to it are impacting your thinking and behaviors since you indicated (by choosing "neither") that you did not find yourself represented by any of the available options.

/THINK ABOUT HOW YOU CAN LEVERAGE YOUR STRENGTHS AND MANAGE SOME OF THE LIMITATIONS WHICH MAY BE HOLDING YOU BACK:

With this special experience you have had in Nature, how do you see the mainstream utilitarian paradigm that takes Nature as a mere resource? Have you noticed that some progress has come at a cost for the environment or society, and we are collectively paying that price? For example, soil erosion or waterways contamination from chemical crop fertilizers meant to enhance soil productivity.

It seems that the human-centric paradigm that we collectively adopted and believe has begun to show some shortcomings, inviting us to revisit our place and role in the larger ecosystem.

What are some undesirable consequences of human innovations that you have personally experienced? What message may be in this for you?

How are your powerful moments of experiencing Nature reflected in your day-to-day decisions and actions?

We live in a society that rewards rational thinking and intellectual capabilities, and that encourages a utilitarian or instrumental approach to the natural world and its resources. How do you manage this tension?

/THOUGHTS TO PONDER WHEN YOU CONSIDER THE SM:

According to a 2018 United Nations study, over 55% of the world's population lives in urban areas, a proportion that is expected to increase to 68% by 2050. As a result, for many of us, the disconnection from Nature is rather "natural." Hectic life in large cities makes it difficult for us to remember that we are more than individuals moving through traffic and buildings. The common associations with

the word “Nature” may be vacation time, a park, or a documentary. What about our food? Our body? The materials of every object we use?

We rely on and praise scientific progress, but history has demonstrated that scientific findings are always within the constraints of available instruments, paradigms, or assumptions and many myopic or biased conclusions have been revealed with the passage of time, the development of more precise measurement techniques and revolutionary thinking. Biomimicry, a discipline studying how Nature solves problems, has been highlighting the wisdom of billions of years of evolution, and suggesting that we may find more answers in Nature than through our human intellect.

In fact, indigenous people have demonstrated a more resilient lifestyle, based on an intuitive connection to Nature.

This disconnection from Nature leads to a utilitarian relationship: Nature is reduced to instrumental resources for human needs and wants, causing not only spiritual alienation, but is the root cause for many unsustainability behaviors.

What impacts do you see from having a utilitarian relationship with Nature?

When we understand something, we start caring for it. Understanding that we are one with Nature, a species within species, is a profound experience that can shape behaviors leading to a more harmonic relationship with the self, with each other and with all beings.

You seem to have experienced it: a sensorial, intuitive understanding. It is not something to be learned, but rather an experience that we allow to happen, and which makes us remember something we have always known but had forgotten.

/HOW ABOUT YOU TRY:

Having had an experience of oneness with Nature, you have the possibility to reach back into it and honor it, integrating it into who you are. Research has indicated that the experience of oneness with Nature, albeit rare, has a direct connection to shaping a more sustainable society and planet.

How can you plan to have more of these moments? Your being, your soul will welcome it, and the nourishment may help heal a perhaps currently divided self.

It is impossible to guess your particular context, and your current priorities. But we invite you to give yourself an unusual gift: Spend an hour in Nature, on your own, without looking at your phone, and with no books, pets or other people. If you have never experienced this, you are up for a very special treat!

Understanding that we are one with Nature, a species within species, is a powerful spiritual experience that can shape behaviors leading to a more harmonious relationship with each other and all beings.



**/WHAT IS ASSESSED HERE:
HOW YOU THINK ABOUT THE
MEANING, ROLE AND VALUE OF
MINDFULNESS AND ITS PRACTICE,
AND HOW YOU FEEL ABOUT IT.**



What this tells you:

This graph shows that your approach to the assessed topic is both cognitive and affective. We don't enough have data to report about your behaviors and whether or how your understanding and feelings are converted into actions.

YOUR SMI RESPONSES INDICATE THAT you have a clear understanding of the world we live in and the importance of mindfulness.

You realize that consumption is rewarded, linking “who we are” with “what we do, have, or own”. You see this materialistic pattern in society, with its consequences on how we have to keep busy doing things, seeking to make money to be able to belong, feel respected and valued. You realize the unfortunate impact that this implicit message has on our health and well-being. It’s like being

trapped in a race to pursue an elusive and short-lived happiness.

We cannot comment on how your thinking impacts your behaviors, since you indicated (by choosing “neither”) that you did not feel represented by either of the available options.

However you seem to experience the tension and stress that comes with the reality you are living. According to your choices in the questionnaire, you have discovered a way to pause and re-center, experiencing a positive impact on how you feel about yourself, and how you interact with others.

It is not clear what strategies you employ to regain your inner calm. Pausing and stepping away from our tasks clears our mind, and we can return with renewed energy. Is this something you remember to do when you need it? If not, how could you help yourself remember it more regularly, or just in time?

/THINK ABOUT HOW YOU CAN FURTHER LEVERAGE YOUR STRENGTHS AND MANAGE SOME OF THE LIMITATIONS WHICH MAY BE HOLDING YOU BACK:

Given what you notice about the “achievement race” that we live in, how does this align with your experience, and with your values? Does your reality reflect the priorities that are important for you? If not, what are some small changes you might make?

Studies show the physical and emotional consequences of a constant focus on doing, while overlooking the more profound dimensions of “being,” such as reflection, spiritual or religious practices. We all need time to recharge, and to connect with our deeper self.

It may be as simple as going for a walk, listening to your preferred music, dancing, practicing a sport, playing with children or your pet, gardening or creating art.

If these are some of the activities that help you unwind, you are on the right path already. They are called “contemplative practices” because they engage a different part of our brain, creating a ‘buffer zone’ that permits releasing tensions, and many times we end up seeing our challenges in a different light.

/THOUGHTS TO PONDER WHEN YOU CONSIDER THE SM:

From the perspective of a sustainability mindset, mindfulness is both a key practice and an amazing result. Research has shown a direct link between individuals that have some contemplative practices not just with their physical and psychological health, but also with the emergence of feelings of empathy and compassion.

This creates a disposition towards positive social and environmental actions, and the resulting satisfaction feeds a positive reinforcing loop. In other words, the better we feel about something we’ve done, the more we seek to repeat the experience.

When we access and display a more balanced version of ourselves, we convey an unspoken message to the people with whom we interact, not just by what we say or how we behave, but through our attitude and energy. This has a proven positive influence on others, as science has identified with the phenomenon of “emotional contagion.”

In other words, when we develop a sense of peace for ourselves, we are also radiating a gift of peace to the world.

You already know that.

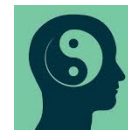
/HOW ABOUT YOU TRY:

What is mindfulness for you today: Is it a practice or a does it form a part of your lifestyle?

What would need to be true for you to take it to the next level, and what might that look like for you?

How easy is it for you to “catch yourself” in the moment when you are not fully present, not mindfully listening, or letting your emotional reactions control you, as opposed to your wiser self?

Mindfulness is being fully present, experiencing connectedness with all that is. Mindfulness enhances awareness and compassion, and predisposes to social and environmental actions.



**/WHAT IS ASSESSED HERE:
WHAT YOU THINK ABOUT HAVING A
PURPOSE IN LIFE, PARTICULARLY
SOMETHING THAT IS IN SERVICE TO
OTHERS; HOW THIS FITS YOUR
REALITY AND HOW YOU FEEL ABOUT
IT.**



What this tells you:

When the graph is well balanced, it means that you have a good understanding of the aspect of the Sustainability Mindset being assessed, that you are able to connect with your feelings about it, and that you tend to act upon what you know and feel. This is a good start, and you might want to think about circumstances or contexts in which you would like to act more, understand better or further explore your feelings.

YOUR SMI RESPONSES INDICATE THAT you think it is important to find a purpose in life, to identify something that, by making a difference, makes our life meaningful. You actually state that you may have found it, through actions that serve others.

It is possible that part of your obligations and responsibilities are to serve others, to attend to their needs or expectations. Your work, family, perhaps relationships, form part of your reality

and use up your available energy – and you perceive this as your service. Or you may have found a cause where you can contribute your unique skills and talents, for the greater good.

Your choices in the questionnaire indicate that it is not a good feeling for you not to have a meaningful life. And you wonder if we are on journey of seeking and finding answers to the question of “Why am I here?”

Indeed, for some the answer is clear and endures over time. For others, it changes and makes us seek renewed answers. When what you are doing no longer satisfies you, it is actually a great signal. The tension we feel indicates that something has already begun to shift, and we are on a path of further growth and transformation.

/THOUGHTS TO PONDER WHEN YOU CONSIDER THE SM:

The research regarding core aspects for a sustainability mindset identified the role of activities intentionally done for the “greater good.” The state of our planet is such that it requires each of us to step up and play an active role in shaping a better world.

The actions needed, whether large or small, share a similar result: they provide us with a feeling of joy, which then we want to replicate to feel good again, thus creating a reinforcing loop. Interestingly, we tend to think that we need to take care of ourselves first, before helping others, but the facts show that when we do small acts of kindness for others, we feel much better ourselves.

/HOW ABOUT YOU TRY:

With this in mind, what are some new experiments you can try? What are some different things for

the greater good that you already did, and perhaps could repeat, do regularly, or improve? Which of your natural gifts and skills could you put into service for the greater good, in a cause for which you have a passion?

Don't get intimidated by grandiose words like 'changing the world' or having a life mission or purpose. In fact, each small action of kindness has already an impact that we may never be able to imagine. That is also changing the world, one interaction at a time.

Defining our purpose provides an unconscious compass, and when it is grounded in values of our higher self, we actively shape a better world.



[Please click HERE](#)

and provide us with a brief (1 min) Feedback.

Thank you!

