



Sustainability
Mindset
Indicator®

**/REPORT
PREPARED FOR:
IMBAPT2024-60
30/Nov/2024**

*If for every dollar in minute that we invest in AI, we invest another dollar in developing our own consciousness, our own mind, we will be ok. **Yuval Noah Harari***

FOOD FOR THOUGHT.

How ready do you feel you are to deal with the complexity we are living in? How do you respond to the increasing polarization, to the need to expand our attention to stakeholders impacted by our daily decisions? How comfortable are you planning and yet letting go of your plans as you consider the feedback that reality is giving you? How easy is it for you to adapt, revisit your assumptions, unleash your creativity, and innovate?

These are some of the key indicators of resilience.

We find comfort in our plans, in the 'known and tried out' ways of doing things. Yet this may also be the obstacle that slows us down when we need to find new ways of acting that have a better impact on the world. While much is talked about the future that awaits us, it's easy to forget that it is *us*, each one of us, who is shaping this future with our daily decisions and actions. Yet, rushed as we all live in these demanding times, we may not take the moment to pause, observe where we are, what our most precious goals and values are, and how our day, today, is reflecting those values, leading us to those goals. And what course corrections we may want to do!

This is the Era of Purpose. How mindful are you of your larger purpose? Setting a purpose becomes the compass offering certainty in a world filled with uncertainty. Are you giving yourself the gift of a pause, to ask yourself what your larger, higher purpose could be?

You may recognize in these lines some aspects that were addressed in the statements offered to you in the Sustainability Mindset Indicator, as you were invited to reflect and choose which best represented you. This report constitutes a picture, a map of your personal journey towards a resilient, purposeful, creative mindset for flourishing as an individual, making a difference in the world. Which is sustainability at its best.

Let this report be a gift for your soul.

Welcome to your Personalized Report. This Report is based on your selections on the SMI. It is meant to be a personal development tool, to highlight aspects of your understanding, behaviors and feelings related to your Sustainability Mindset (SM).

You will find observations that you may identify with, others that you vaguely recognize, and others that perhaps don't resonate with you. Keep what you need and what makes sense to you.

You will also find questions to consider, suggestions for things you can try, and information related to the aspects covered in this report, and how these are related to the Sustainability Mindset.

Take your time reading your Report. Pause, take notes, and reflect. It is all about you, and for you. There were no wrong answers in the survey. Only good options and perhaps some that you hadn't thought of.

/WHAT YOU WILL FIND IN THE FOLLOWING PAGES

This Personalized Report is organized into several sections. The first section contains a graph, displaying how the different aspects assessed compare to each other, according to your choices in the survey. Those that occupy a larger area are your stronger ones and the narrower or missing ones are aspects of the Sustainability Mindset that are less developed or absent for you, as inferred from the combination of your answers.

The next section presents personalized descriptions of where you find yourself on your journey towards a Sustainability Mindset, in four clusters: Ecological Worldview, Systems Perspective, Emotional Intelligence, and Spiritual Intelligence.

Within each of these clusters you will find what aspects were assessed, and a graph for each aspect displaying how you connect to this topic, whether intellectually, through your actions and behaviors and/or by engaging your emotions.

If you see some areas missing within the graph, it means that either you selected “neither” for that question and therefore we don’t have information to report on, or your answers suggest you don’t engage in one or more areas (cognitive, behavioral, or affective). Similarly, if you selected “neither” for all the questions within one Sustainability Mindset Principle, we don’t include a graph, since we don’t have information to report on.

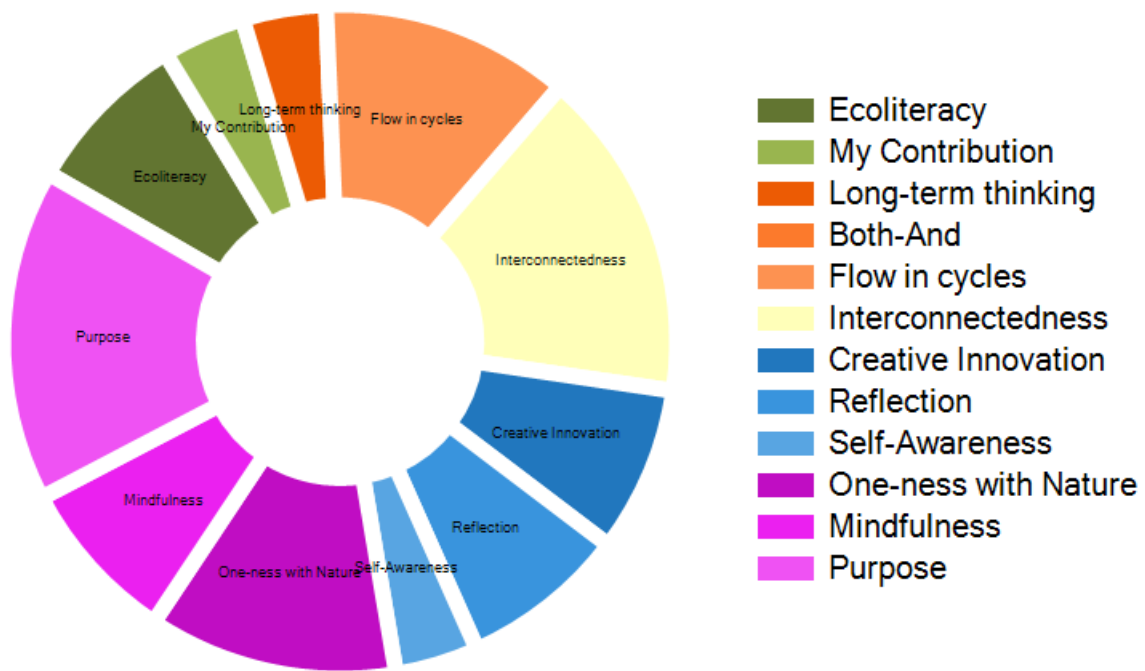
Each graph is accompanied by a box with a brief explanation, and you will find much more information in the text to include what your choices suggest, why this Principle is key for a sustainability mindset, and questions to ponder and suggestions to try.

Enjoy your journey into the realm of the Sustainability Mindset - a place where you can be your best, for yourself and for the World.

The SMI Team

**/ Your overall SUSTAINABILITY
MINDSET PROFILE**

The graph below shows your personal profile, indicating how – relatively to each other – you have developed your Sustainability Mindset. The wider sections indicate your stronger areas, and vice versa.

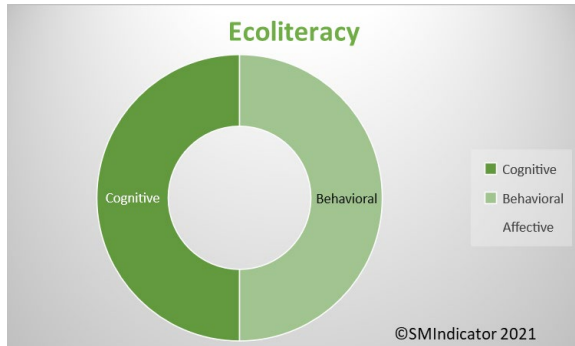




/ECOLOGICAL WORLDVIEW

An ECOLOGICAL WORLDVIEW is the result of having an intellectual and affective broad understanding of the planetary challenges, how they are interrelated, and how we are contributing to them.

/WHAT IS ASSESSED HERE: HOW YOU UNDERSTAND THE ENVIRONMENTAL AND SOCIAL CHALLENGES, AND HOW YOU FEEL ABOUT IT, AND THE IMPACT ON YOUR BEHAVIORS.



What this tells you:

If a graph shows the two dimensions - cognitive and behavioral - it means that your tendency is to distance yourself from your feelings, particularly in the aspect assessed here. You have a good understanding about it, and are acting upon it, but you might want to further explore your emotions in relation to it.

YOUR SMI RESPONSES INDICATE THAT you have a good understanding of the complexity of the planetary challenges we are facing, and how they are interrelated.

Furthermore, in your daily decisions **you are comfortable** acting in ways that can minimize your ecological or social footprint, and/or help the sustainability of our planet.

That said, you seem to be emotionally distanced from negative feelings related to the state of our society or our planet.

**/THINK ABOUT HOW YOU CAN FURTHER
LEVERAGE YOUR STRENGTHS AND MANAGE
SOME OF THE LIMITATIONS WHICH MAY BE
HOLDING YOU BACK:**

The benefit is that this saves you from stress, and may help you stay focused on your daily reality. The downside is that you may miss engaging from the heart, and connecting with your deeper values and with others suffering or in need, which can be a very powerful experience. You are present with your head, but not necessarily with your heart and soul.

/THOUGHTS TO PONDER WHEN YOU CONSIDER THE SM:

We are definitely living in a time of information overload. It is challenging to stay on top of all that is happening, while keeping up with our own obligations and activities. Furthermore, sustainability news tends to be on the negative side, creating doomsday scenarios and scary prophecies that can trigger anxiety, and not precisely inspiring us to act. We may tend to avoid the news because they make us feel bad, sad, or concerned.

Yet we tend to underestimate our own power and influence in shaping a better world. As a matter of fact, if the challenges we are currently experiencing are a product of past problematic behaviors, then we are also positively shaping the future of the planet with our current mindful decisions and restorative actions. Understanding the scope of the sustainability challenges, from the environmental and social perspective, allows us to start noticing linkages, relationships and connections.

The other powerful path is in our emotions.

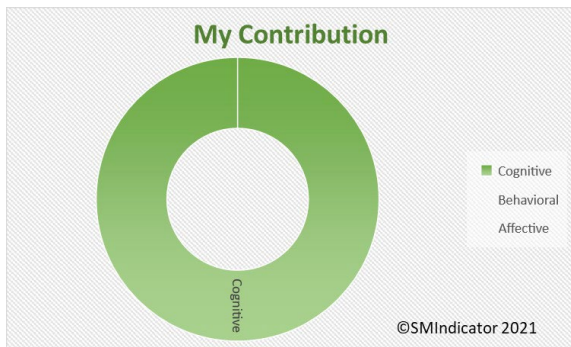
/HOW ABOUT YOU TRY:

When we allow ourselves to connect from the heart with the reality of the news and find small ways to change our behavior, we are more present and don't need to live with our divided selves. This can be more fulfilling.



Understanding the state of the planet allows us to be more fully aware of the challenges, the complexity of how they are linked to each other, and to explore what it means to us.

**/WHAT IS ASSESSED HERE:
HOW YOU SEE THE RELATION
BETWEEN INDIVIDUAL DECISIONS
AND PLANETARY CHALLENGES, HOW
YOU FEEL ABOUT IT AND THE
IMPACT ON YOUR PERSONAL
BEHAVIORS.**



What this tells you:

This graph shows only one dimension – cognitive - indicating that you have knowledge about this aspect, without necessarily connecting it with your behaviors. You might use this information to seek ways to convert your understanding into action.

We don't have enough data to report about your feelings on this topic.

YOUR SMI RESPONSES INDICATE THAT you periodically ponder if you are personally playing a role in the world's social or environmental problems of the world. Certainly, you don't contribute to the problems intentionally, but you seem to pause and wonder in what ways you may be contributing to them.

This is not a pleasant thought, however, and it seems you realize that the problems are too large, too complex, and too long in the making, for you to possibly have responsibility for them. This thought may help calm distressing feelings and can

be a useful coping strategy. Perhaps you sense that you would be overwhelmed by emotions while feeling powerless to solve the problems.

/THINK ABOUT HOW YOU CAN FURTHER LEVERAGE THOSE STRENGTHS AND MANAGE SOME OF THE LIMITATIONS WHICH MAY BE HOLDING YOU BACK:

We cannot comment on your feelings related to this topic, since you indicated (by choosing "neither") that you did not feel represented by either of the available options. However, you indicate that you hope someone will eventually intervene to address those social or environmental problems. This perspective can also cause stress, as it assumes we are at the mercy of powerful external forces or individuals.

There may be another way to look at this: What if you could identify small ways in which you realize that you are contributing to the problems, and then, begin to explore changes that are within your control?

/THOUGHTS TO PONDER WHEN YOU CONSIDER THE SM:

Thinking of how we are personally contributing to the planetary challenges may not be something we do daily. Our demanding lives have many obligations and don't leave much time for reflecting on this. We are busy getting things done!

Yet when analyzing the current un-sustainability of our planet, science has clearly established a link between human behaviors in past decisions and the current problems we face. Much attention is now focused on how to repair the damage done, and how to restore damaged, depleted, or endangered resources. Scientists and entrepreneurs study how to minimize current or future problems at the environmental or social level, and how to innovate to avoid negative impacts into the future.

If we collectively influenced the place, we find ourselves in now (with all its problems), that means we also hold the key to influence where we will collectively be in the future – we: meaning humankind at large, or, from a closer perspective, our families, children, and grandchildren.



/HOW ABOUT YOU TRY:

You are already asking yourself: *how am I contributing to this problem?* This question opens a path of inquiry, which automatically leads to expansion of your consciousness. You become more alert to take notice, and thus more open to try out new behaviors.

This same question, by the way, is also a powerful tool that can improve your relationships and interactions with others! So often we focus on what others are doing unto us, which leaves us powerless. When we learn to pay attention to what is our role in the problems we endure, we regain control and can actually do something.

Actively thinking about your contribution is definitely an important milestone in your personal development, with planetary implications.

So, what are some habits that you are willing to change, to lower your contribution to the problems?

Certainly, you will not solve the bigger problems, but you may feel more empowered, less at the mercy of others, and playing a role that you may actually enjoy. Food for thought.

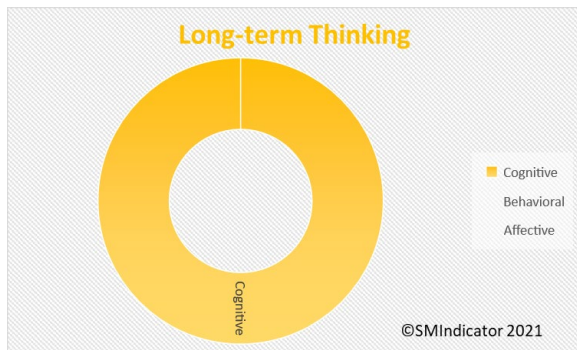
When we identify the ways in which we are unintentionally contributing to the problems, we have a chance to do something about them. It also expands our consciousness and develops social sensitivity.



/SYSTEMS PERSPECTIVE

When analyzing information and making decisions a SYSTEMS PERSPECTIVE has a major impact on the sustainability of our actions.

**/WHAT IS ASSESSED HERE:
HOW YOU THINK ABOUT THE LONG-TERM IMPACT WHEN ANALYZING AND MAKING DECISIONS, COMPLEMENTING SHORT-TERM THINKING; HOW YOU FEEL ABOUT IT, AND THE IMPACT ON YOUR BEHAVIORS.**



What this tells you:

This graph shows only one dimension – cognitive - meaning that you have an intellectual understanding about this aspect. You are not necessarily engaging your feelings nor converting them into actions. You might use this information to explore your emotions related to this aspect of the sustainability mindset, and perhaps find ways to convert your understanding into actions.

YOUR SMI RESPONSES INDICATE THAT you have a good understanding of the long-term sustainability impacts that our decisions may have, even the simple and daily ones, not to mention behaviors commonly accepted in our society.

At the same time, **you are comfortable** focusing on the short term when trying to solve a problem, because it seems more tangible, concrete and functional. You are pragmatic and prefer to save time, or so it seems.

You are a good problem solver – looking for quick and efficient ways to address a situation and seeking to simplify matters. Acting promptly is important for you, and it provides you and others with a sense of control and direction.

/THINK ABOUT HOW YOU CAN FURTHER LEVERAGE YOUR STRENGTHS AND MANAGE SOME OF THE LIMITATIONS WHICH MAY BE HOLDING YOU BACK:

In this sense, you diminish uncertainty for yourself and others, which may be welcome since uncertainty can create anxiety. Furthermore, trying to imagine future consequences may be puzzling because it requires a stretch of the imagination, and can make us feel responsible for future impacts that we can't quite conceive.

That said, this same decisiveness may impede the consideration of long-term impacts of the solution proposed, which could mean sustainability issues in the future. Much of the unsustainability problems originate in the focus on the short term when making decisions.

/THOUGHTS TO PONDER WHEN YOU CONSIDER THE SM:

There is a tacit pressure to act promptly and focus on that which needs immediate attention. This is very important, and there are many circumstances where this way of responding is the optimal, or even the only one that matters. A fire in the house, for example. We can sense the urgency and it is not a good idea to pause and reflect on the long-term implications of the fire.

But for many daily decisions, the context is different, and yet we still prioritize short term thinking, often without even pondering any medium- or long-term impacts of what we are doing. The stream of life, our

colleagues, perhaps everyone with whom we interact takes for granted that we “all” act this way.

On the other hand, with greater understanding of the social and environmental problems we are facing, it has become clear that the law of cause-and-effect is always at play, even if not immediately obvious. In other words, the consequences of our daily actions do have impacts - some over time, some just in a different geography, and many on both.

As with other aspects which are key for a sustainability mindset, it is not a question of choosing one over the other, but a matter of balancing both views and taking both time horizons into account.

/HOW ABOUT YOU TRY:

This mental habit expands our consciousness, as we become more aware of the way we are impacting others and the world. Not thinking about this doesn't stop it from happening. Rather, stretching our imagination to consider potential impacts across time helps us make better decisions, and play a more active role in shaping a better world.

For example, what might be some long-term consequences on sustainability of a purchasing decision you recently made? What would your latest decision look like if you would have considered those potential long-term impacts?

It takes practice to develop new mental habits, but they too, can have long term impacts – for the better.



Every action has consequences that are not immediately visible. Considering the long-term when analyzing situations and making decisions has a positive impact on global sustainability.

**/WHAT IS ASSESSED HERE:
HOW YOU THINK ABOUT AND DEAL
WITH AMBIGUITY AND PARADOXES,
HOW YOU RECOGNIZE DIVERSITY,
FEEL ABOUT IT AND ACT TOWARDS
IT.**

YOUR SMI RESPONSES INDICATE THAT you are a pragmatic person that likes clarity in life.

/YOU ARE COMFORTABLE when you have clear choices - black and white options - and find a sense of stability and reassurance in holding onto your values and your worldview.

When faced with a new situation, you seek to rapidly frame it within what you have learned is “right” or “wrong.” This may be useful for avoiding gray areas, but perhaps you also miss out on understanding the complexities of the situation.

We cannot comment further on your thinking related to this topic, since you indicated (by choosing “neither”) that you did not find yourself represented by either of the available options.

**/THINK ABOUT HOW YOU CAN
FURTHER LEVERAGE YOUR
STRENGTHS AND MANAGE SOME
OF THE LIMITATIONS WHICH MAY
BE HOLDING YOU BACK:**

Many of our world’s sustainability challenges originate in choices such as: “either the planet or the economy” and “either protect the wolves or the farmer.” Yet, Either-Or choices can be misleading, and have us believe there are win-lose solutions that work. But do they really? If the cost is high, do they still work? What may we be missing that others are seeing when we find ourselves in a

situation where we see it the “right” way, and others are “wrong”? How could we all benefit from having a fuller picture?

Your choices in the questionnaire indicate that you may feel a certain amount of tension, as you realize that you may be perceived as not being very inclusive, but your heart remains true to values you were taught and respect. Because much of the world is changing, you may feel compelled to be more understanding with others’ perspectives, but this doesn’t come easy to you, and you may feel frustrated or impatient. Of course, you wish there would be a solution that might make everyone happy, one that accommodates diverse ways of seeing the economy, ecosystems, humans, and the planet, but you don’t think this may be realistic.

/HOW ABOUT YOU TRY:

Here is a question to consider: Can you think of an event or situation, however minor, where someone with a different opinion was able to step into your shoes? How did it make you feel? How did it impact your attitude and your behavior? What if we could shape a world that makes room for different perspectives? Where you acknowledge others’ points of view, and yours are also included by others?

Since we cannot control what others think or do but do have control over our own way of thinking, there may be an interesting path worth exploring here.

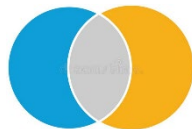
**/THOUGHTS TO PONDER WHEN YOU
CONSIDER THE SM:**

It seems that today, more than ever, we are collectively being confronted with paradoxes and ambiguity. Increased transparency and access to

information from around the world makes us aware of very different ways of thinking, being and acting with which we may not agree or be comfortable.

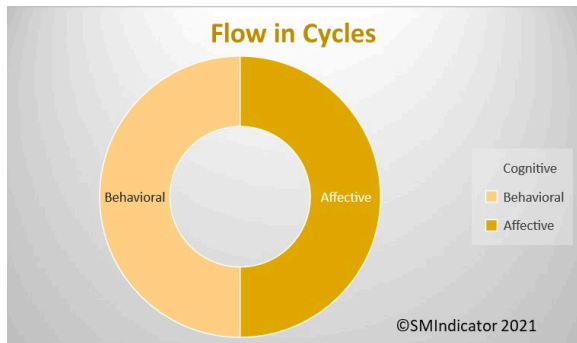
Challenging as this may be, there is a benefit to it: We are becoming aware of our own worldviews just by realizing that there are other ways of seeing and feeling. This is an evolutionary insight of great value, the foundation for more peaceful societies. In a way, life is prompting us to expand our understanding and our scope of caring, which go hand in hand.

When we understand something, we can begin caring. This is the start of a better world for all.



Both+and thinking allows us to understand paradoxes and calls for creative solutions that are inclusive of all stakeholders.

**/WHAT IS ASSESSED HERE:
HOW YOU BALANCE YOUR CAPACITY
TO ANALYZE AND PLAN WITH THE
UNDERSTANDING OF NATURAL
CYCLES, AND MAKE THEM PART OF
YOUR MINDSET.**



What this tells you:

This graph shows two dimensions, the behavioral and affective. This means that you connect emotionally with this aspect, and act upon it, perhaps without a full understanding of why it is important. You may find it interesting to deepen your understanding of this principle.

YOUR SMI RESPONSES INDICATE THAT you have an interesting combination of perspectives that impact your way of thinking and acting.

On the one hand, you recognize a world in which challenges are presented as opportunities to find intelligent solutions. Indeed, intellectual abilities are very important, as they allow people to control difficult situations by crafting plans and setting goals to measure their progress. And when a problem is beyond individuals' control or capacity, as many sustainability-related problems are, they rely on others to solve them.

You are aware that the most common belief is trust in human ingenuity to figure out solutions for our environmental or social problems.

On the other hand, you sense that planning may just be a way to feel in control of situations, constantly challenged, since life - with its countless variables - is too complex to be managed.

It may be this same frustration, when things don't work out as you or others plan or expect, that makes you wonder: Shouldn't we let go of plans and observe what the events are telling us? That thought alone seems to bring you a welcome sense of peace.

/YOU ARE COMFORTABLE reminding yourself to take plans lightly, and listening to the feedback life gives you. You try to act in alignment with the cyclical flow of nature, which means that you accept that things grow, but not forever because there is also decline and death.

In our day-to-day this means accepting ageing and mortality, endings of relationships or certain phases in our life, and new beginnings as well. In another context, it means that you see humanity as part of Nature, not as its controller-in-charge.

This is a valuable attitude, because it may make your life easier. Like swimming along with the river's current, it increases your speed, and reduces the stress of resisting obstacles.

/THOUGHTS TO PONDER WHEN YOU CONSIDER THE SM:

You may be wondering why planning is related to several key aspects for a sustainability mindset. The connection is not in the planning as an activity per se, but in the way we think and process

information when we plan. Planning is about organizing and structuring in order to control outcomes. Planning is linear by definition -one step after the other - and it assumes cause-effect relationships. But what about multi-effects, multi-causes, and feedback loops?

Contrast this with the sustainability problems we are facing. To begin with, they are complex and multidimensional by their very nature. Many are the result of our linear thinking, for example we believe that we can pursue unlimited growth, yet depletion of natural resources shows us this is not possible.

Our reliance on the human mind can create a collective assumption that we are in control, but a “small” manifestation like Covid-19 arrives as a surprise to debunk the myth of our own superiority.

There are no linear processes in Nature: Everything flows in cycles of birth, growth, death, and rebirth.

Many aspects of man-made unsustainability of the planet are a result of the misconception that we are not governed by this law of Nature.



/THINK ABOUT HOW YOU CAN FURTHER LEVERAGE THOSE STRENGTHS AND MANAGE SOME OF THE LIMITATIONS WHICH MAY BE HOLDING YOU BACK:

Planning in itself is not the problem, but rather the excessive reliance on carefully crafted steps is. You may be in a valuable transition, going back and forth between the desire to control and the impulse to let go of plans.

Here a few thoughts to ponder. Do you see yourself balanced in terms of making and letting go of plans? How do you balance structure and flow, organization and flexibility? What do you see as your next personal development challenges in this aspect?

/WHAT IS ASSESSED HERE: HOW YOU UNDERSTAND AND EXPERIENCE INTERCONNECTEDNESS, VERSUS VALUES LIKE AUTONOMY AND INDEPENDENCE.



What this tells you:

When the graph is well balanced, it means that you have a good understanding of the aspect of the Sustainability Mindset being assessed, that you are able to connect with your feelings about it, and that you tend to act upon what you know and feel. This is a good start, and you might want to think about circumstances or contexts in which you would like to act more, understand better or further explore your feelings.

YOUR SMI RESPONSES INDICATE THAT you have a clear understanding that we are all interconnected, even in non-obvious ways, and that no one is really fully independent.

You are comfortable seeing yourself as part of a larger whole, and you pay attention to the input of stakeholders when analyzing a problem and seeking effective solutions. In addition, you are appreciative about other people's input and support. You thrive in collaborative environments,

welcome participatory solutions and feel grateful for the help of others.

This is a precious combination in the current times! While certain cultures have a collectivistic framework, most of the western-northern culture - widely exported and globalized - is individualistic and celebrates personal achievement. But you know this is neither realistic nor feasible.

/THINK ABOUT HOW YOU CAN FURTHER LEVERAGE YOUR STRENGTHS AND MANAGE SOME OF THE LIMITATIONS WHICH MAY BE HOLDING YOU BACK:

Do you experience an unspoken expectation in your daily life - to be independent, to outperform others, to be self-reliant or perhaps to demonstrate your value in competitive settings? Have you sensed the contradiction between these two paradigms, one valuing competition and self-reliance, the other promoting collaboration and inclusion? How do you manage the tension, and are you able to share your perspective with others, perhaps helping to expand their thinking horizons?

/THOUGHTS TO PONDER WHEN YOU CONSIDER THE SM:

The polarities of independence vs. interconnectedness and competition vs. collaboration are of particular relevance when focusing on sustainability. The environmental and social challenges are complex and multidimensional, making it impossible for any person to solve on their own. It is only through collective thinking, action and collaboration of multiple stakeholders that we will be able to develop alternatives. (This, by the way, makes sustainability a great opportunity for contributing personal skills to a larger cause).

/HOW ABOUT YOU TRY:

With your valuable perspective, how do you handle situations when others don't see the urgency of collaboration but rather respond from the old paradigm of autonomy and competition?

Here is a tip that may come handy. Invite them to name one achievement that was purely, authentically, their own, without any other person playing a role in it.

When we see interconnectedness, we understand the importance of diversity, and our decisions and actions become more inclusive, which contributes to the sustainability of the whole.

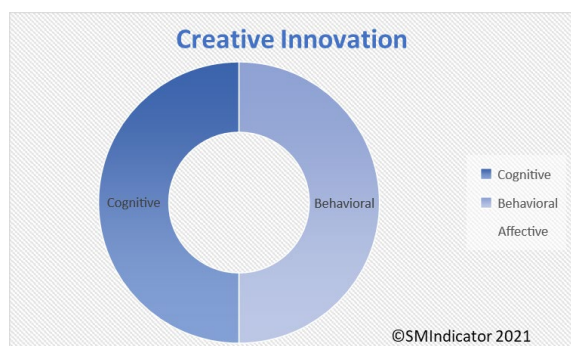




/EMOTIONAL INTELLIGENCE

Understanding ourselves through the anchors of our identity, the pace of our life, and how we consider our intuitive wisdom are key for a sustainability mindset.

**/WHAT IS ASSESSED HERE:
HOW YOU INCORPORATE NON-
RATIONAL INFORMATION, INTUITIVE
KNOWING, CREATIVITY AND
IMAGINATION IN ORDER TO
BALANCE RATIONAL THINKING, AND
HOW YOU FEEL ABOUT IT.**



What this tells you:

If a graph shows the two dimensions - cognitive and behavioral - it means that your tendency is to distance yourself from your feelings, particularly in the aspect assessed here. You have a good understanding about it, and are acting upon it, but you might want to further explore your emotions in relation to it.

YOUR SMI RESPONSES INDICATE THAT you have a clear understanding of the value of combining your logical and analytical thinking abilities with creative imagination. You know that the human mind is capable of great accomplishments, as history has shown, when intuition and creative ideas are coupled with rational thinking and good strategies. You may even trust that our sustainability problems could be addressed with a good balance of these abilities.

You are quite comfortable in situations where you can contribute by putting your “creative hat” on, by being playful, by not preemptively censoring your ideas, and even tolerating the uncertainty of not knowing how something will work out.

**/THINK ABOUT HOW YOU CAN FURTHER
LEVERAGE YOUR STRENGTHS AND
MANAGE SOME OF THE LIMITATIONS
WHICH MAY BE HOLDING YOU BACK:**

You seem able to live with a certain degree of risk-taking, and based on your answers, that worked well for you. How did that feel? Because your responses also reveal a personal preference for more structured situations, where you can think something through and craft some concrete strategies to implement a solution.

You indicate that you enjoy organizing reality into priorities, and when you can follow proven steps. Order is something you cherish, disliking the uncertainty of chaotic situations.

This must create some tension - between your need for order and strategic plans and your moments of unleashed imagination!

**/THOUGHTS TO PONDER WHEN YOU
CONSIDER THE SM:**

You know that the sustainability challenges we are facing are largely new, and as COVID-19 taught us, increasingly situations arise for which we don’t have previous experience or science on which to rely. We have become more aware of this complexity of our challenges, and we are skeptical of simplistic solutions.

However this also requires entry into uncharted territories. Resilience calls for flexibility in adapting to new situations, and this entails innovating and experimenting, as you indicate you sometimes do. Definitely having no clear blueprints to follow may be disturbing, yet there are no choices but to take some risks. And fortunately you can handle them.

/HOW ABOUT YOU TRY:

This seems to be your current challenge: How can you feel a bit more comfortable bringing your rich creativity and risk acceptance into other situations? You have a very valuable asset in the ability to unleash your imagination. Can you imagine if you could fully enjoy and deploy it, letting go of any fears and concerns?

Here is a thought to ponder: What would have to be true and how can you influence this?

It seems that you have a reservoir of imagination and perhaps intuitive wisdom, which you are already tapping into. This may come at a personal cost, in the form of “what-ifs,” concerns and maybe even fears. But if you find ways learn to trust your intuition, you will flourish further and enjoy it more. This, complemented with your strategic thinking, will maximize your achievements for the benefit of all.

Resilience is based on constant creativity, innovation, and experimentation. When we neglect the non-rational wisdom we have in us, our solutions are missing critical information, and may create negative impacts on the ecosystem and society.



**/WHAT IS ASSESSED HERE:
HOW YOU NOTICE YOUR OWN PACE,
AND HOW YOU BALANCE RAPID
RESPONSE WITH MAKING TIME TO
PONDER AND REFLECT BEFORE
ACTING. AND HOW THIS MAKES
YOU FEEL.**



What this tells you:

This graph shows only the affective dimension, meaning that your predominant tendency is to connect emotionally with this aspect, without necessarily engaging in related behaviors or fully comprehending it. You might want to try and expand your understanding and also explore how you might make a small difference every day.

YOUR SMI RESPONSES INDICATE THAT you are a true citizen of our times!

You see the importance of swift actions in a world that you believe is unforgiving of slow-movers. You know that the present day pace is fast or highly accelerated, depending upon who you ask. This understanding is aligned with your behaviors.

You are comfortable making quick assessments of a situation and acting promptly.

You are a quick thinker, and while you may overlook some details, you consider that your decisiveness also helps stimulate those that are more hesitant. Speed is justified.

Yet your questionnaire answers reveal something noteworthy. It seems that when you are reminded to slow down, you are really appreciative! It makes you feel better, more relaxed or lowers your stress levels.

If this is the case, it is a valuable experience that may be the portal to a more peaceful pace.

/THINK ABOUT HOW YOU CAN FURTHER LEVERAGE YOUR STRENGTHS AND MANAGE SOME OF THE LIMITATIONS WHICH MAY BE HOLDING YOU BACK:

According to your answers, you seem to be gifted with an intuition that something is not quite right. Do you ever wish you could relax more, slow down and do nothing? Does your body, your mind or perhaps your soul call for less stress, or even a break? What message may be there for you, waiting to be heard and acted upon?

/THOUGHTS TO PONDER WHEN YOU CONSIDER THE SM:

Since we are looking at these aspects from the perspective of a sustainability mindset, let's pause and think about what behaviors might be most effective as well as much needed.

While there is a call for urgent action about climate change and the related social and environmental problems, many modern sustainability challenges are actually the result of overlooked potential impacts. For decades, well-

intended decisions were largely made by quickly identifying the best option.

But today we are understanding better that problems are complex, that solutions impact a multiplicity of future stakeholders, and that there are always consequences.

Of course, it is not possible to anticipate all scenarios, but pausing and checking assumptions can be very useful to avoid future problems.

Reflective practices help to pause, and to ponder the situation and its implications before jumping into action.



/HOW ABOUT YOU TRY:

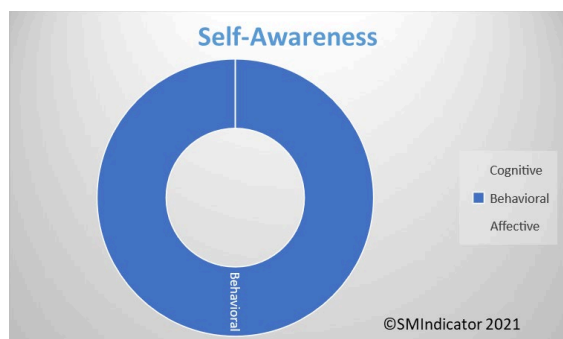
For example, what can you learn to avoid or repeat from past experiences? Can you identify in hindsight, what was at stake?

When we have more information we can better weigh alternatives. All of this, however, is at odds with speed. We cannot both act fast and ponder carefully.

The question becomes: Is decisiveness and fast action coming at an expensive price for you and others, us, the next generations, and the ecosystem?

Food for thought!

**/WHAT IS ASSESSED HERE:
HOW AWARE YOU ARE ABOUT THE
ANCHORS OF YOUR IDENTITY AND
YOUR VALUES; HOW YOU FEEL AND
ACT IN CONSEQUENCE.**



What this tells you:

This graph shows only one dimension – behavioral - meaning that you are action- oriented, without much engagement of your feelings and without necessarily thinking about this aspect intellectually. You might use this information to seek ways to expand your understanding and explore your emotions.

YOUR SMI RESPONSES INDICATE THAT you see the world through a precise lens that is, and has for a long time been, the most widely shared paradigm.

In the world as you (and so many others) see it, you recognize the immense progress that humanity has made, particularly accelerated over the last century. You realize that competition has driven individuals to seek to be better than and outperform others, and the resulting inventions have vastly improved the quality of life for people on this planet.

This progress may have come at a price that we now see, particularly at the environmental or social level, but from your perspective the fallout was not intentional and was justified by the benefits. Human “can-do” spirit and individual ambition will continue developing new solutions.

You are aware that there is an increasing trend to highlight the negative consequences of progress, of capitalism, or of society in general, and this seems to make you feel uncomfortable, even upset.

It is possible that you, yourself, sense a personal tension between the gravity of what we are facing as humanity and your individual bewilderment about what you might actually do to help prevent or solve the problems. For example, you may feel that climate change is too complex to be attributed to our mere daily behaviors.

In addition, the tension may put into question the values with which you were raised or grew up, and this is likely an uncomfortable experience, particularly if these values are important for you, or are an important part of your identity. For instance, achievement, competition, being a winner, not being a loser, and success may be important foundations of who you are. You may wonder what makes them suddenly wrong!?

These may be difficult dilemmas for you right now.

/HERE COMES A SURPRISE: The choices you made in the survey, however, provide a surprising insight: You have been noticing that many of your automatic behaviors are not very environmentally friendly, or perhaps have some kind of negative social impact.

This seems to have motivated you to try to make some changes, although it might not have been easy. Nevertheless, this is a very important

moment of awareness: change starts with our noticing some discomfort about something and wanting to do something about it to feel better (or at least less bad). In this case, you seem to have achieved this very important step.

Of course it can be overwhelming to think of the complex problems. But what if you start small?

/THOUGHTS TO PONDER WHEN YOU CONSIDER THE SM:

Let's pause for a moment. This survey was designed around the Sustainability Mindset, which is a way of thinking and being, to optimally adapt to the moment in which we are living. This Mindset focuses on using our natural gifts to shape a better future, for ourselves and for all, the ecosystem included.

Research has proven that what may sound overwhelming, actually can be broken down into small, realistic ways to contribute to the greater good, and, as you well know, feel great at the same time. The first step is taking a fresh look at what surrounds us.

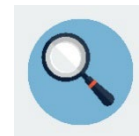
Undoubtedly, there are social and environmentally related challenges everywhere. Some happen locally, others across borders. Science has been linking many of these issues to human behaviors, such as consumption of unhealthy foods, depletion of natural resources, pollution or contamination of air, soil, and water. And we are left to deal with the consequences today, trapped in a paradigm that prioritizes values that have a negative impact, such as thoughtless consumption.

But what if we realized that some of our habits today are (unintentionally) contributing to more of these problems in the future? And vice versa: What if a change in a small habit today could do its part to shape a better future?

/HOW ABOUT YOU TRY:

Can you think of another habit of yours that might qualify? We don't know what we can do until we try. And when we put aside cynicism for a moment, we actually may feel a deep sense of joy. Sometimes we shift our values because of a new experience. Worth trying, right?

When we explore our personal values, beliefs, assumptions, and motivations, we gain greater control over our actions, and we can see new alternative behaviors.





/SPIRITUAL INTELLIGENCE

The spiritual orientation to Nature, to ourselves and to others are key factors for a Sustainability Mindset, as they impact the quality of our actions.

**/WHAT IS ASSESSED HERE:
HOW YOU EXPERIENCE NATURE,
HOW YOU UNDERSTAND THE
HUMAN RELATIONSHIP WITH
NATURE, AND YOUR RELATED
FEELINGS AND BEHAVIORS.**



What this tells you:

This graph shows that your approach to the assessed topic is both cognitive and affective, but you are not necessarily translating what you know and feel into actions. You might use this information to explore new habits and daily changes for a sustainability purpose.

YOUR SMI RESPONSES INDICATE THAT you think of Nature as an experience that offers more wisdom than we can intellectually grasp. This understanding may be the result of some special moments, when you stood in awe admiring Nature, your heart perhaps filled with joy and some kind of wordless experience of beauty.

You see the limitations of pure rationality and realize that the intellectual capability is valuable for building scientific knowledge, but also frequently overstated. Our comprehension of the natural world, including

our bodies, has advanced over time, but in the history of science findings are always within the constraints of available instruments, paradigms, or assumptions. It is clear to you that over time, the development of more precise measurement techniques or revolutionary thinking has certainly revealed the myopic or biased conclusions of the past!

However, you are also comfortable acting with a utilitarian approach to natural resources, considering the rights granted by our belief in “human superiority”.

Without doubt, many scientific discoveries and improvements of our quality of life have shown the power of the human mind. Yet you may have also noticed that some betterments have come at a cost for the environment or society, and we are collectively paying that price, for example, soil erosion or waterway contamination from chemical crop fertilizers meant to enhance soil productivity.

The human-centric paradigm that we collectively adopted and believe has begun to show some shortcomings, inviting us to revisit our place and role in the larger ecosystem.

What are some undesirable consequences of human progress that you have personally experienced? What message may be in this for you?

/THINK ABOUT HOW YOU CAN LEVERAGE YOUR STRENGTHS AND MANAGE SOME OF THE LIMITATIONS WHICH MAY BE HOLDING YOU BACK:

The combination of your choices in this instrument seems to show a disconnect between what you believe and value, and your actions. You have been blessed with some powerful experiences of oneness with Nature that give you an empathic disposition, yet they don't seem to manifest in how you act. It

may be a way of blending into a context that rewards rational thinking and intellectual capabilities.

But is that who you really are?

/THOUGHTS TO PONDER WHEN YOU CONSIDER THE SM:

According to a 2018 United Nations study, over 55% of the world's population lives in urban areas, a proportion that is expected to increase to 68% by 2050. As a result, for many of us, the disconnection from Nature is rather “natural.”

Hectic life in large cities makes it difficult for us to remember that we are more than individuals moving through traffic and buildings. The common associations with the word “Nature” may be vacation time, a park, or a documentary. What about our food? Our body? The materials of every object we use?

We rely on and praise scientific progress, but history has demonstrated that scientific findings are always within the constraints of available instruments, paradigms, or assumptions and many myopic or biased conclusions have been revealed with the passage of time, the development of more precise measurement techniques and revolutionary thinking. Biomimicry, a discipline studying how Nature solves problems, has been highlighting the wisdom of billions of years of evolution, and suggesting that we may find more answers in Nature than through our human intellect.

In fact, indigenous people have demonstrated a more resilient lifestyle, based on an intuitive connection to Nature.

This disconnection from Nature leads to a utilitarian relationship: Nature is reduced to instrumental resources for human needs and wants, causing not only spiritual alienation, but is the root cause for many unsustainability behaviors. What impacts do you see from having a utilitarian relationship with Nature?

When we understand something, we start caring for it. Understanding that we are one with Nature, a species within species, is a profound experience that

can shape behaviors leading to a more harmonious relationship with the self, with each other and with all beings.

You seem to have experienced it: a sensorial, intuitive understanding. It is not something to be learned, but rather an experience that we allow to happen, and which makes us remember something we have always known but had forgotten.

/HOW ABOUT YOU TRY:

Sometimes we realize that our thinking, feeling, and acting are not aligned. When we notice it, we may feel discomfort and tension- something out of sync. A sustainability mindset is not just harmony with the ecosystem, but it starts within us.

Is there something you need to revise, to feel more authentically who you are? What part of you is still clinging to an old paradigm, and why might that be so?

Understanding that we are one with Nature, a species within species, is a powerful spiritual experience that can shape behaviors leading to a more harmonious relationship with each other and all beings.



**/WHAT IS ASSESSED HERE:
HOW YOU THINK ABOUT THE
MEANING, ROLE AND VALUE OF
MINDFULNESS AND ITS PRACTICE,
AND HOW YOU FEEL ABOUT IT.**



What this tells you:

This graph shows only the affective dimension, meaning that your predominant tendency is to connect emotionally with this aspect, without necessarily engaging in related behaviors or fully comprehending it. You might want to try and expand your understanding and also explore how you might make a small difference every day.

YOUR SMI RESPONSES INDICATE THAT you focus on what you need to get done, according to your own goals and expectations, and/or the demands that you receive from your social surroundings.

This is already a lot to keep you busy, and often you don't even have enough time to accomplish all of it. There are great expectations placed upon you!

You are very aware that society rewards action and its ensuing achievements, rather than inaction and passivity, which is kind of what mindfulness practice seems to you.

ALIGNED WITH THIS, your choices in the questionnaire indicate that you do not see particular value in the concept of mindfulness, or perhaps it is just not a part of your life at this time. You realize that other cultures have different behavioral patterns from the one in which you live, but you are cognizant of the importance of adapting to the culture to which you belong. As the saying goes, "when in Rome do as the Romans do".

When your reality is challenging and poses a high demand on your physical, emotional and psychological systems, you try to manage the best you can and seek to gain inner peace. It is not clear from the information you shared what, if any, strategies you have found that work to help you lower your stress or find some balance.

So here are some questions for you to contemplate.

Has it ever occurred to you that the fact that "everyone lives like this" may not necessarily make it ideal? Studies show the physical and emotional consequences of a constant focus on doing while overlooking the more profound dimensions of "being," such as reflection, spiritual or religious practices, time to recharge and find ourselves, and time to connect with our deeper self.

Have you ever reflected on the high value our world gives to consumption, linking "who we are" with "what we have or own"? Have you ever felt like being trapped in a race to pursue a perhaps elusive and short-lived happiness?

/THINK ABOUT HOW YOU CAN LEVERAGE YOUR STRENGTHS AND MANAGE SOME OF THE LIMITATIONS WHICH MAY BE HOLDING YOU BACK:

Sometimes we hear people say "you should do less, you should relax, you should take time for yourself, etc.," and from your perspective, their suggestions may sound somewhere between unreal and ridiculous, since you are the one living with the

challenges. They don't always realize that you are doing your best all of the time.

Yet, being very concentrated on our obligations rarely leaves time or space to look around, and oftentimes information is available "out there" that could facilitate our task, but we just don't see it.

/HOW ABOUT YOU TRY:

For example, perseverance is an important virtue, except when it makes us miss easier or better ways to achieve our goal. Pausing and stepping away from our task clears our mind, and we can return to it with renewed energy and sharper vision.

Is this something you remember to do when you need it? If not, how could you help yourself remember it just in time?

Individuals that regularly balance their tasks with contemplative practices realize the positive impact this has on their peace of mind, how they relate to others and even on their health. It may be as simple as going for a walk, listening to your preferred music dancing, practicing a sport, playing with children or your pet, gardening or creating art.

If these are some of the activities that help you unwind, you are on the right path already. They are called "contemplative practices" because they engage a different part of our brain, creating a "buffer zone" that permits the release of tensions, after which, often we end up seeing our challenges in a different light.

/THOUGHTS TO PONDER WHEN YOU CONSIDER THE SM:

From the perspective of a sustainability mindset, mindfulness is both a key practice and an amazing result. Research has shown a direct link between individuals that have some contemplative

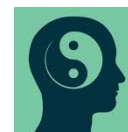
practices not just with their physical and psychological health, but also with the emergence of feelings of empathy and compassion.

This creates a disposition towards positive social and environmental actions, and the resulting satisfaction feeds a positive reinforcing loop. In other words, the better we feel about something we've done, the more we seek to repeat the experience.

When we access and display a more balanced version of ourselves, we convey an unspoken message to the people with whom we interact, not just by what we say or how we behave, but through our attitude and energy. This has a proven positive influence on others, as science has identified with the phenomenon of "emotional contagion."

In other words, when we develop a sense of peace for ourselves, we are also radiating a gift of peace to the world. What are some ideas to try out?

Mindfulness is being fully present, experiencing connectedness with all that is. Mindfulness enhances awareness and compassion, and predisposes to social and environmental actions.



**/WHAT IS ASSESSED HERE:
WHAT YOU THINK ABOUT HAVING A
PURPOSE IN LIFE, PARTICULARLY
SOMETHING THAT IS IN SERVICE TO
OTHERS; HOW THIS FITS YOUR
REALITY AND HOW YOU FEEL ABOUT
IT.**



What this tells you:

When the graph is well balanced, it means that you have a good understanding of the aspect of the Sustainability Mindset being assessed, that you are able to connect with your feelings about it, and that you tend to act upon what you know and feel. This is a good start, and you might want to think about circumstances or contexts in which you would like to act more, understand better or further explore your feelings.

YOUR SMI RESPONSES INDICATE THAT you think it is important to find a purpose in life, to identify something that, by making a difference, makes our life meaningful. You actually state that you may have found it, through actions that serve others.

It is possible that part of your obligations and responsibilities are to serve others, to attend to their needs or expectations. Your work, family, perhaps relationships, form part of your reality

and use up your available energy – and you perceive this as your service. Or you may have found a cause where you can contribute your unique skills and talents, for the greater good.

Your choices in the questionnaire indicate that it is not a good feeling for you not to have a meaningful life. And you wonder if we are on journey of seeking and finding answers to the question of “Why am I here?”

Indeed, for some the answer is clear and endures over time. For others, it changes and makes us seek renewed answers. When what you are doing no longer satisfies you, it is actually a great signal. The tension we feel indicates that something has already begun to shift, and we are on a path of further growth and transformation.

/THOUGHTS TO PONDER WHEN YOU CONSIDER THE SM:

The research regarding core aspects for a sustainability mindset identified the role of activities intentionally done for the “greater good.” The state of our planet is such that it requires each of us to step up and play an active role in shaping a better world.

The actions needed, whether large or small, share a similar result: they provide us with a feeling of joy, which then we want to replicate to feel good again, thus creating a reinforcing loop. Interestingly, we tend to think that we need to take care of ourselves first, before helping others, but the facts show that when we do small acts of kindness for others, we feel much better ourselves.

/HOW ABOUT YOU TRY:

With this in mind, what are some new experiments you can try? What are some different things for

the greater good that you already did, and perhaps could repeat, do regularly, or improve? Which of your natural gifts and skills could you put into service for the greater good, in a cause for which you have a passion?

Don't get intimidated by grandiose words like 'changing the world' or having a life mission or purpose. In fact, each small action of kindness has already an impact that we may never be able to imagine. That is also changing the world, one interaction at a time.

Defining our purpose provides an unconscious compass, and when it is grounded in values of our higher self, we actively shape a better world.



[Please click HERE](#)

and provide us with a brief (1 min) Feedback.

Thank you!

